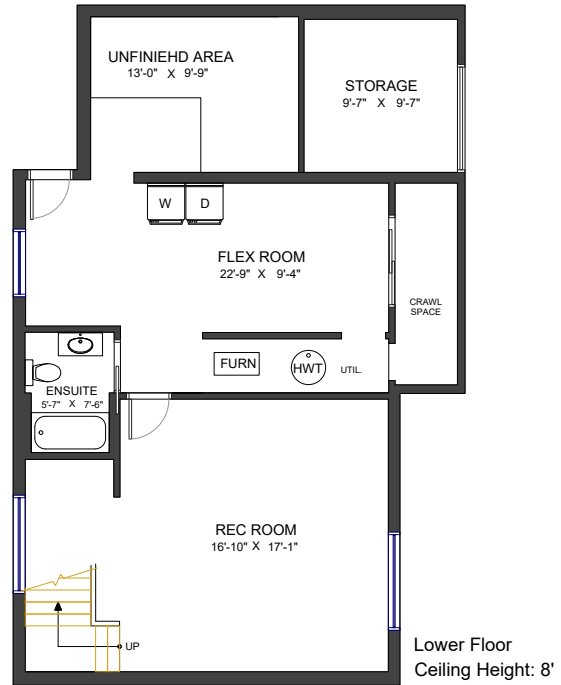
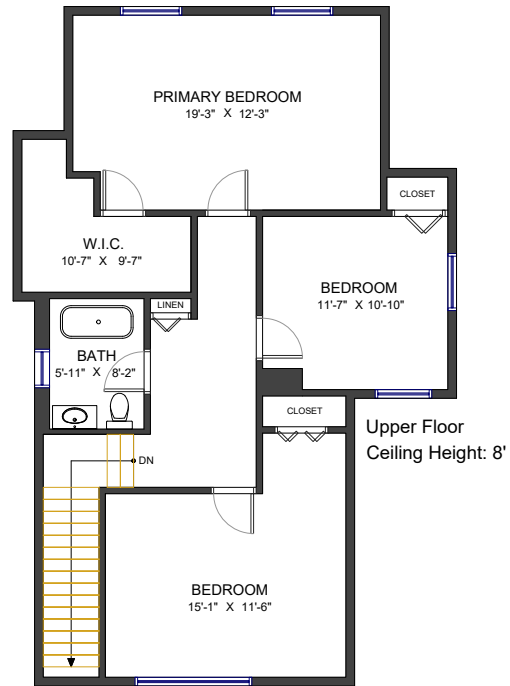
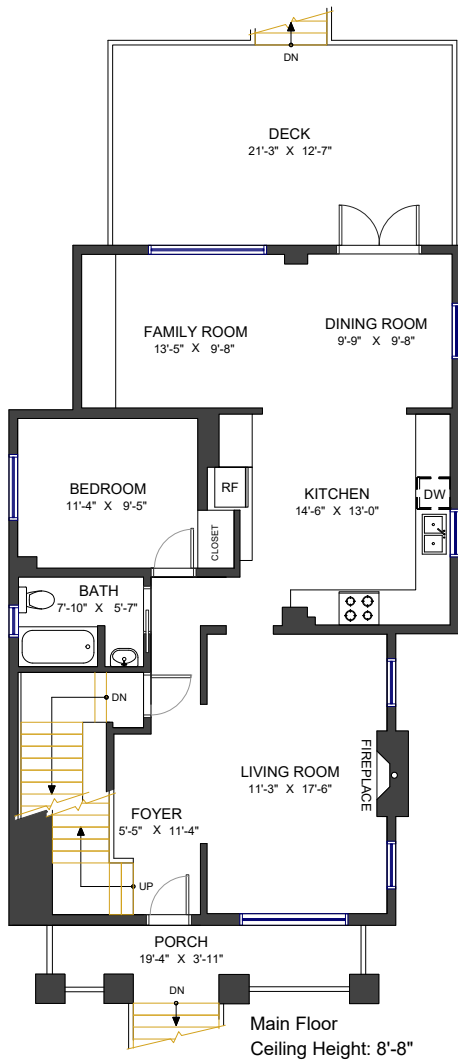




# 222 PRINCESS STREET NEW WESTMINSTER, BC

MAIN FLOOR	1,091 SF
UPPER FLOOR	968 SF
LOWER FLOOR	776 SF
LIVING AREA	2,835 SF
UNFINISHED AREA	149 SF
LIVING AREA	2,984 SF
AUXILIARY AREA	528 SF
PORCH	83 SF
DECK	278 SF
STORAGE	106 SF
CRAWL SPACE	61 SF



Valid Until: March 7, 2027



All dimensions are approximate and not suitable for architectural/construction use.  
This is for marketing purposes only. The measurements are approximate within +/- 2%, E&O insured.  
Total square footage might be kept consistent with strata plan. It might include unfinished area.  
We have no guarantee or warranty of the degree of room titles. Area is calculated per ANSI Z765-2003 method.