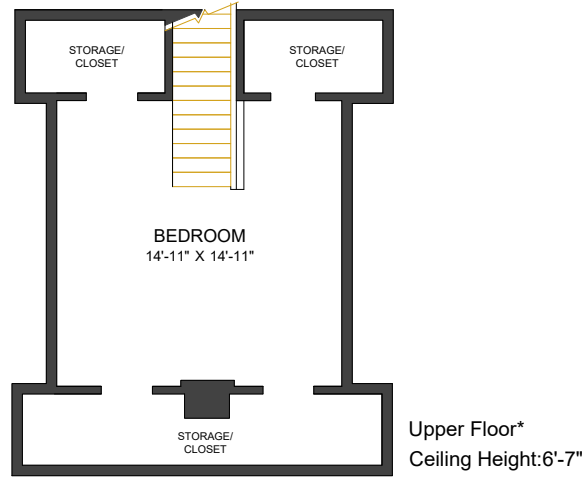


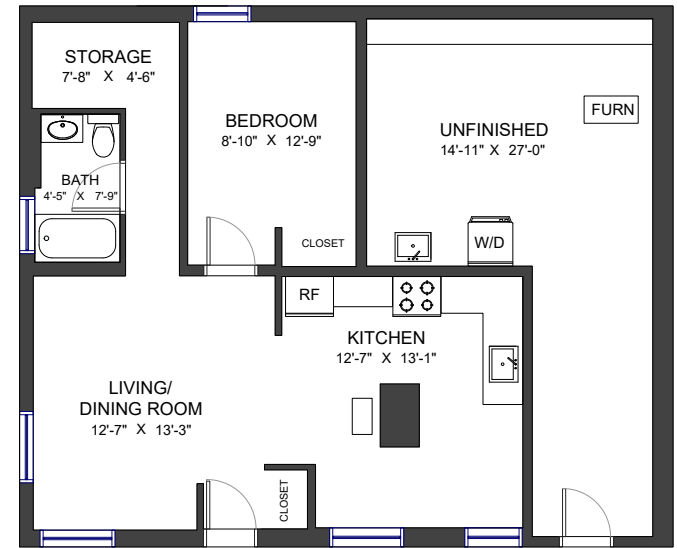
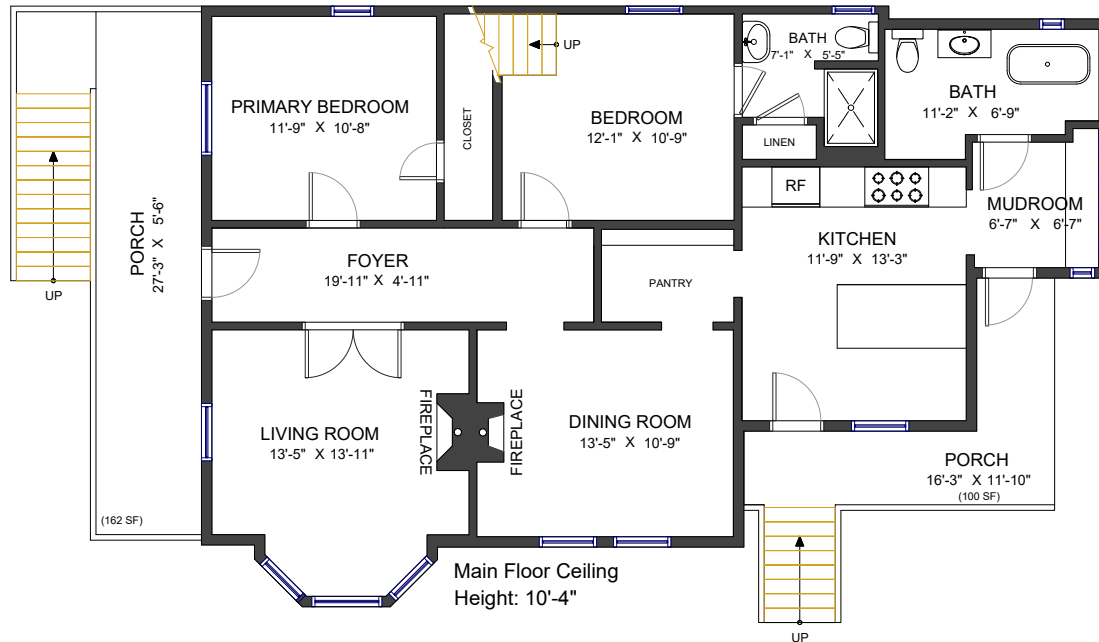


# 217 NINTH STREET NEW WESTMINSTER, BC



MAIN FLOOR	1,182 SF
LOWER FLOOR	638 SF
LIVING AREA	1,820 SF
UPPER FLOOR*	425 SF
UNFINISHED AREA	325 SF
TOTAL AREA	2,570 SF

AUXILIARY AREA	
PORCH	262 SF



Valid Until: March 6, 2027



\*Finished area with limited ceiling height (ANSI Z765 non-compliant)  
All dimensions are approximate and not suitable for architectural/construction use.  
This is for marketing purposes only. The measurements are approximate within +/- 2%, E&O insured.  
Total square footage might be kept consistent with strata plan. It might include unfinished area.  
We have no guarantee or warranty of the degree of room titles. Area is calculated per ANSI Z765-2003 method.



Lori Fralic PREC

604-312-0738

fralicrealestate.com



EACH OFFICE IS INDEPENDENTLY OWNED AND OPERATED