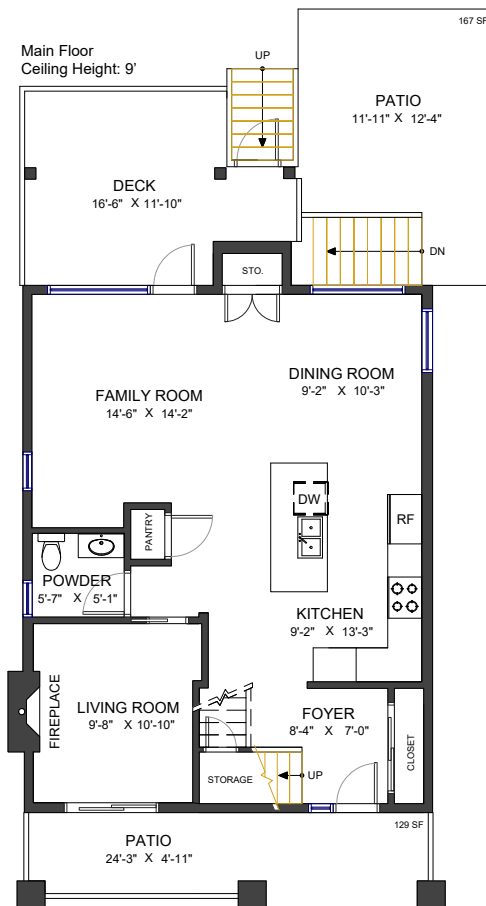
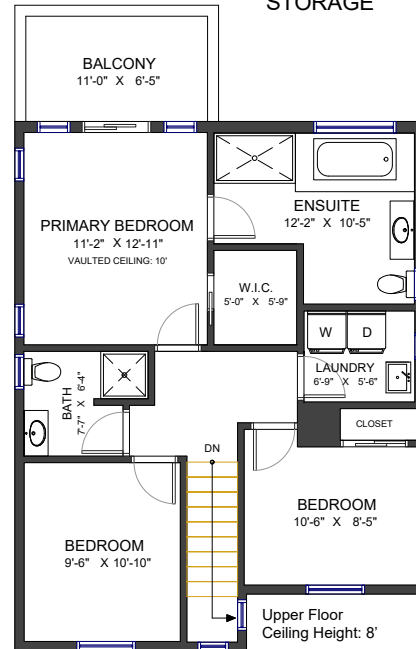
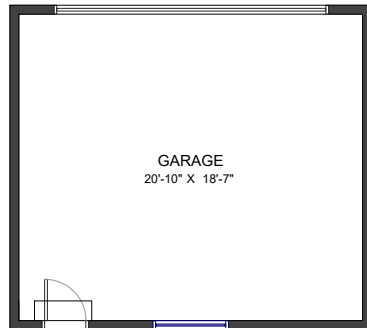




1028 CORNWALL STREET NEW WESTMINSTER, BC

LIVING AREA	2,218 SF	AUXILIARY AREA	1,138 SF
MAIN FLOOR	809 SF	BALCONY	88 SF
UPPER FLOOR	765 SF	PATIO	296 SF
LOWER FLOOR	644 SF	DECK	173 SF
		GARAGE	432 SF
		STORAGE	149 SF



Valid Until: November 18, 2026



All dimensions are approximate and not suitable for architectural/construction use.
This is for marketing purposes only. The measurements are approximate within +/- 2%, E&O insured.
Total square footage might be kept consistent with strata plan. It might include unfinished area.
We have no guarantee or warranty of the degree of room titles. Area is calculated per ANSI Z765-2003 method.