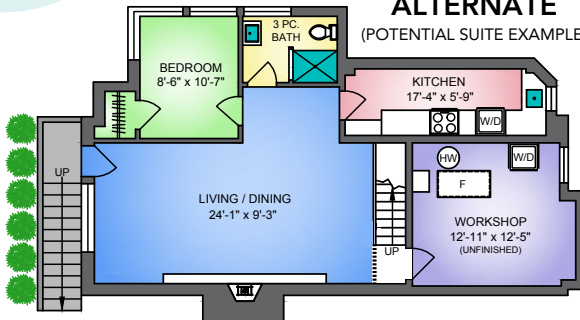


505 QUEENS AVENUE NEW WESTMINSTER, BC

LOWER FLOOR ALTERNATE

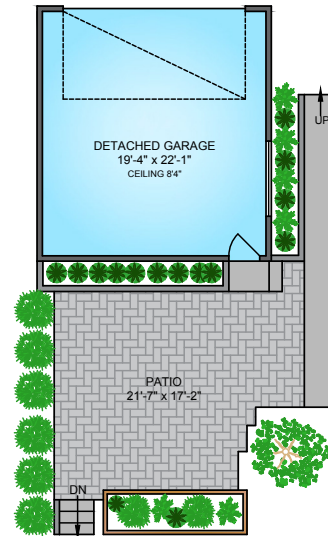
(POTENTIAL SUITE EXAMPLE)



GARAGE

446 SQ. FT.

8'4" CEILING

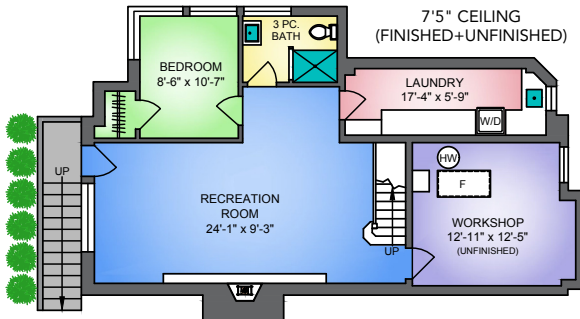


LOWER FLOOR

941 SQ. FT.

7'5" CEILING

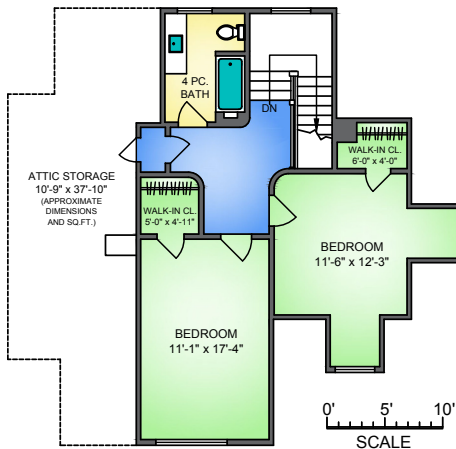
(FINISHED+UNFINISHED)



UPPER FLOOR

733 SQ. FT.

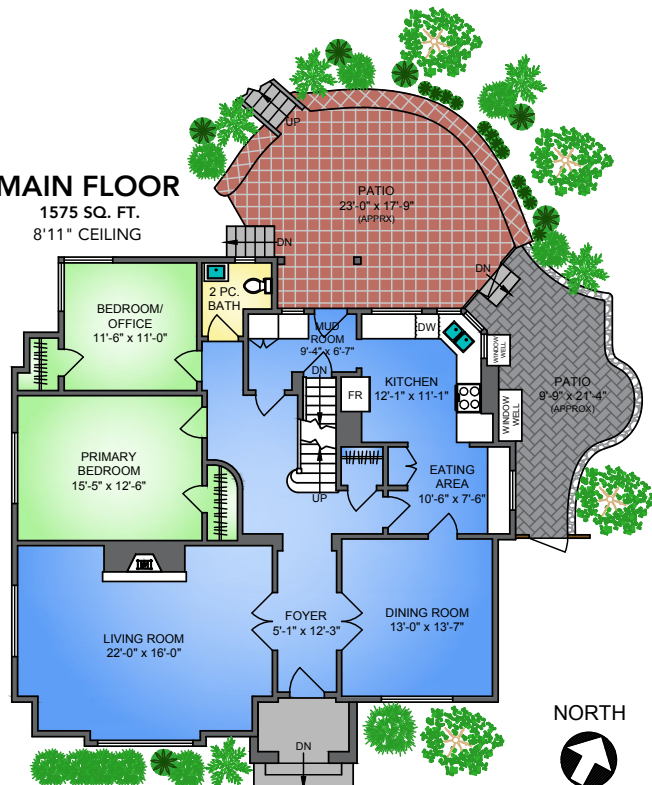
7'11" CEILING



MAIN FLOOR

1575 SQ. FT.

8'11" CEILING



NORTH



505 QUEENS AVE, NEW WESTMINSTER					
APRIL 24, 2025					
PREPARED BY PROPER MEASURE LTD.					
FOR THE EXCLUSIVE USE OF LORI FRALIC.					
ALL AREAS MAY NOT BE 100% ACCURATE. IF CORRECTIONS ARE REQUIRED, PLEASE CONTACT THE PREPARED BY.					
FLOOR	FINISHED	UNFINISHED	DETACHED GARAGE	ATTIC	DECK/PATIO
MAIN	1575	-	446	-	861
UPPER	733	-	-	377	-
LOWER	751	190	-	-	-
TOTAL	3059	190	446	377	861
TOTAL SQ. FT. = 3,249 (FINISHED+UNFINISHED)					

Floor plans are the copyright of Proper Measure Ltd and are licensed for the exclusive use of the individual. If the listing contract should expire Proper Measure Ltd. reserves the right to resell the floor plans. Private resale or modification of the floor plan to a third party by any individual or entity other than Proper Measure Ltd is strictly prohibited.