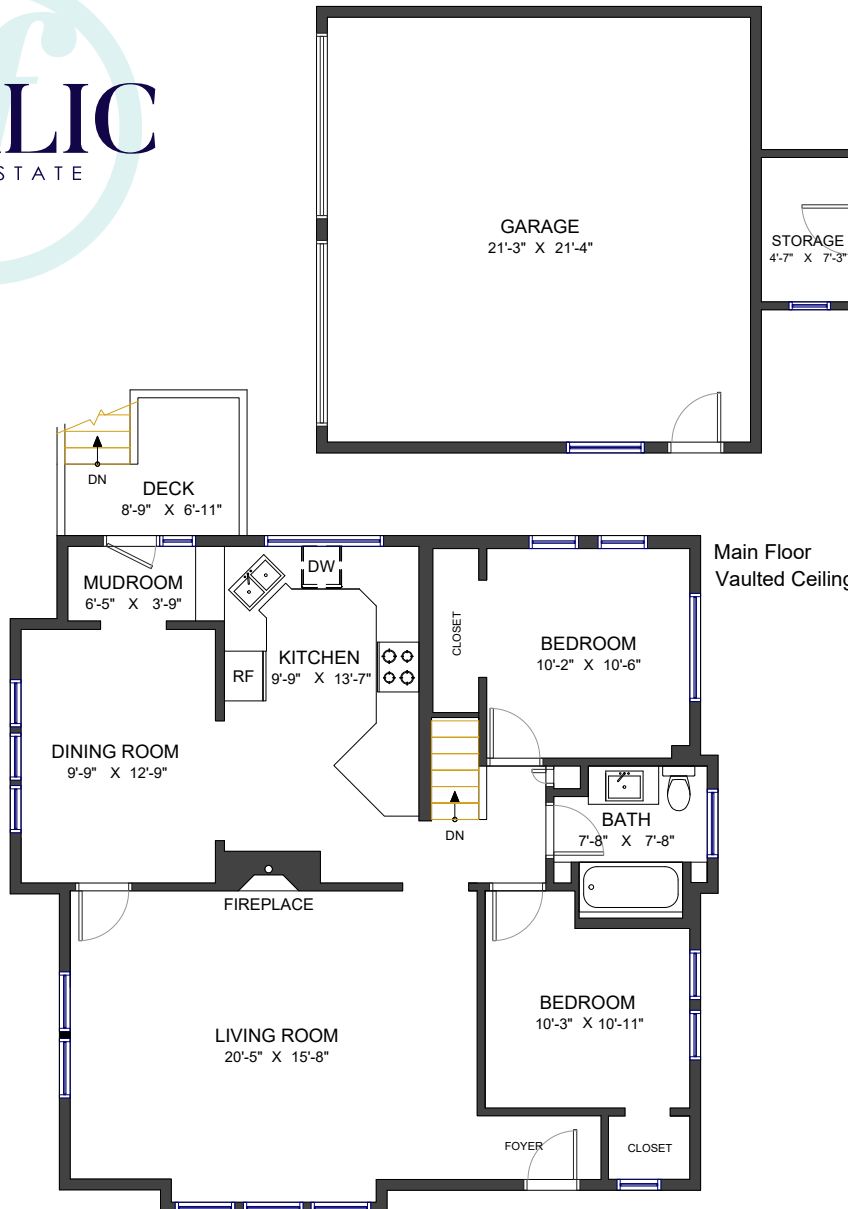




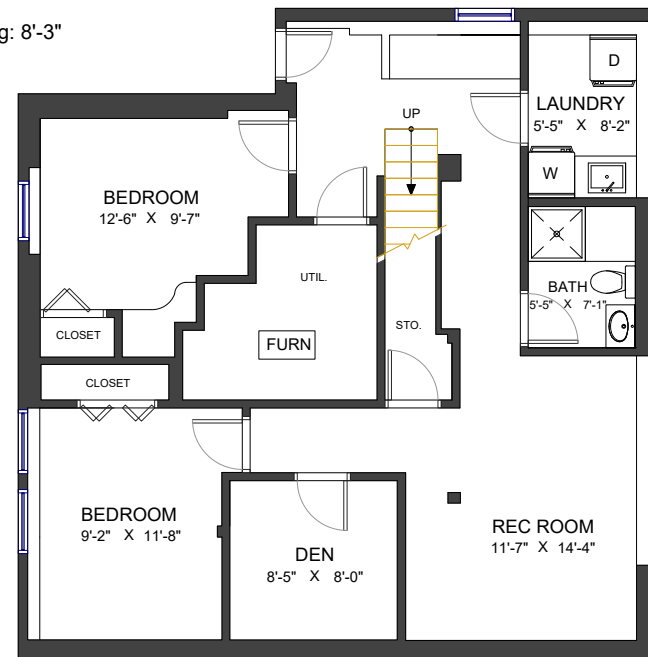
415 THIRD STREET NEW WESTMINSTER, BC



Main Floor
Vaulted Ceiling: 8'-3"

LIVING AREA	2,115 SF
MAIN FLOOR	1,112 SF
LOWER FLOOR	1,003 SF

AUXILIARY AREA	611 SF
DECK	70 SF
GARAGE	501 SF
STORAGE	40 SF



Lower Floor
Vaulted Ceiling: 6'-8"

Valid Until: September 11, 2026



All dimensions are approximate and not suitable for architectural/construction use.
This is for marketing purposes only. The measurements are approximate within +/- 2%, E&O insured.
Total square footage might be kept consistent with strata plan. It might include unfinished area.
We have no guarantee or warranty of the degree of room titles. Area is calculated per ANSI Z765-2003 method.