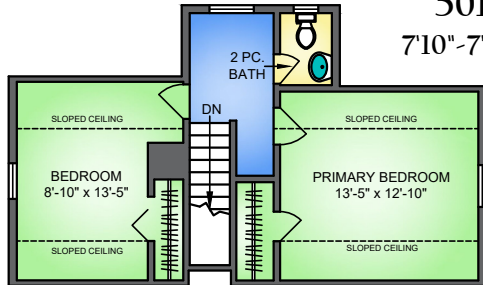




438 FOURTH STREET NEW WESTMINSTER, BC

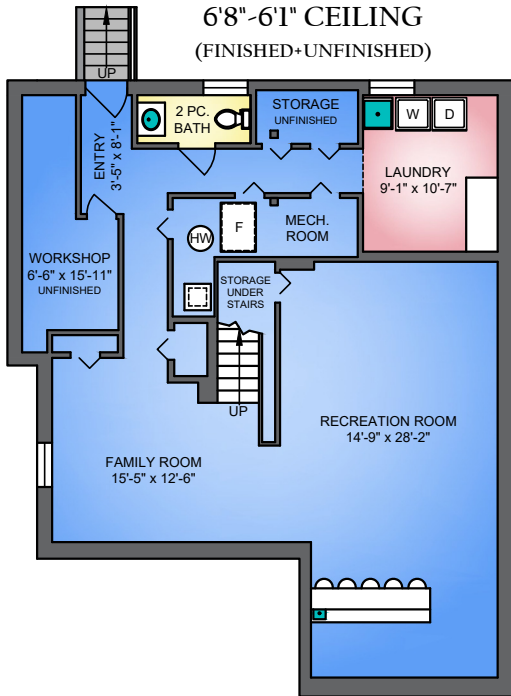
UPPER FLOOR

501 SQ. FT.
7'10"-7'0" CEILING



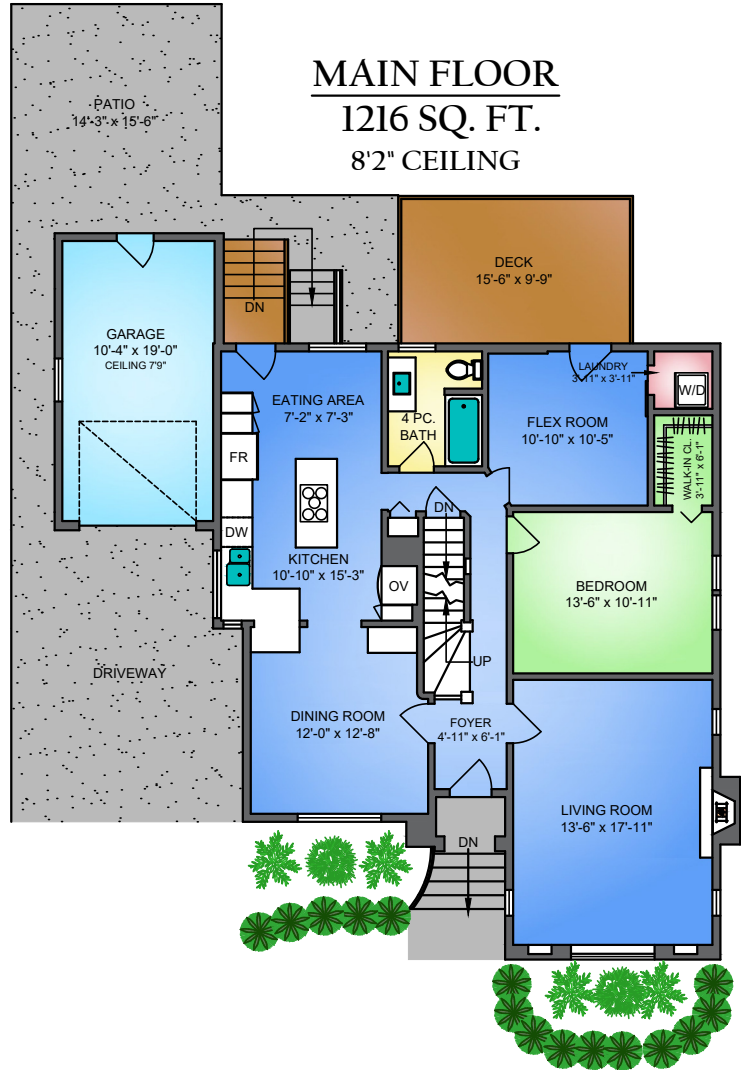
LOWER FLOOR

1224 SQ. FT.
6'8"-6'1" CEILING
(FINISHED+UNFINISHED)



MAIN FLOOR

1216 SQ. FT.
8'2" CEILING



438 4TH STREET, NEW WESTMINSTER DECEMBER 3, 2024 PREPARED BY PROPER MEASURE. FOR THE EXCLUSIVE USE OF LORI FRALIC. <small>PLANS MAY NOT BE 100% ACCURATE. IF CRITICAL BUYER TO VERIFY S&O INSURED.</small>				
FLOOR	AREA (SQ. FT.)			
	FINISHED	UNFINISHED	GARAGE	DECK / PATIO
MAIN	1216	-	221	444
UPPER	501	-	-	-
LOWER	1088	136	-	-
TOTAL	2805	136	221	444
TOTAL SQ. FT. = 2,941 (FINISHED+UNFINISHED)				

NORTH



0' 5' 10'
SCALE