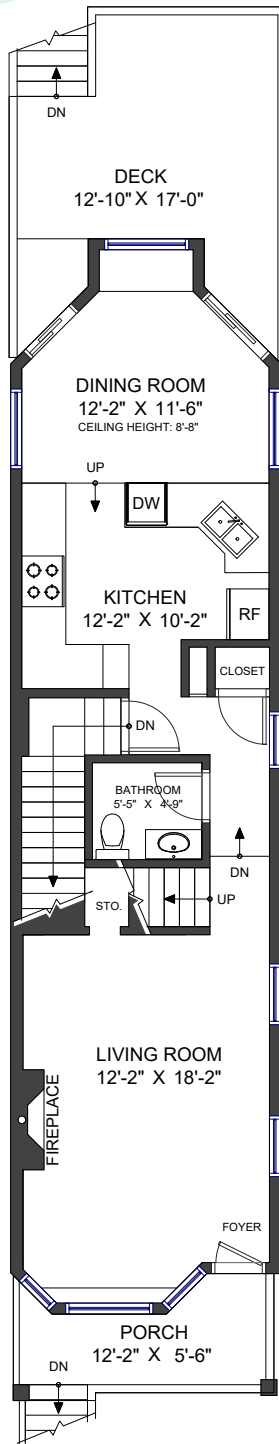


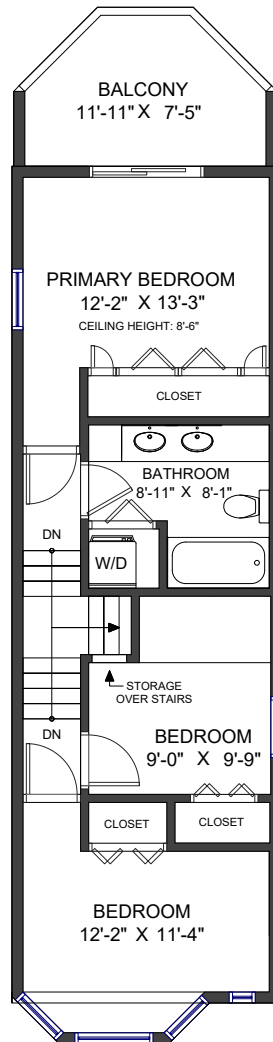


228 FOURTH AVENUE NEW WESTMINSTER, BC



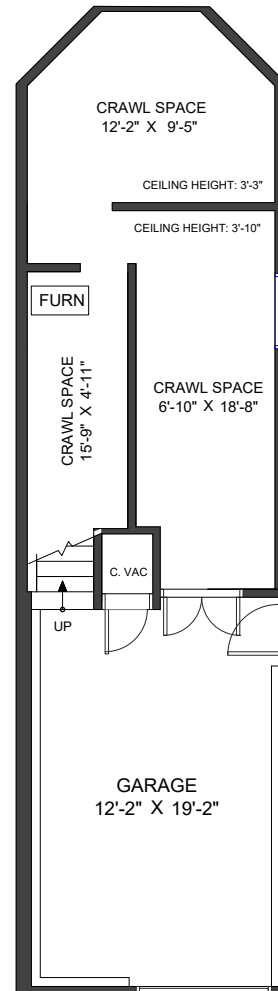
Main Floor
Ceiling Height: 8'

Upper Floor
Ceiling Height: 8'



LIVING AREA	1,187 SF
MAIN FLOOR	642 SF
UPPER FLOOR	545 SF

AUXILIARY AREA	951 SF
DECK	173 SF
PORCH	62 SF
BALCONY	85 SF
GARAGE	286 SF
CRAWL SPACE	345 SF



Valid Until: March 17, 2026



All dimensions are approximate and not suitable for architectural/construction use.
This is for marketing purposes only. The measurements are approximate within +/- 2%. E&O insured.
Total square footage might be kept consistent with strata plan. It might include unfinished area.
We have no guarantee or warranty of the degree of room titles. Area is calculated per ANSI Z765-2003 method.