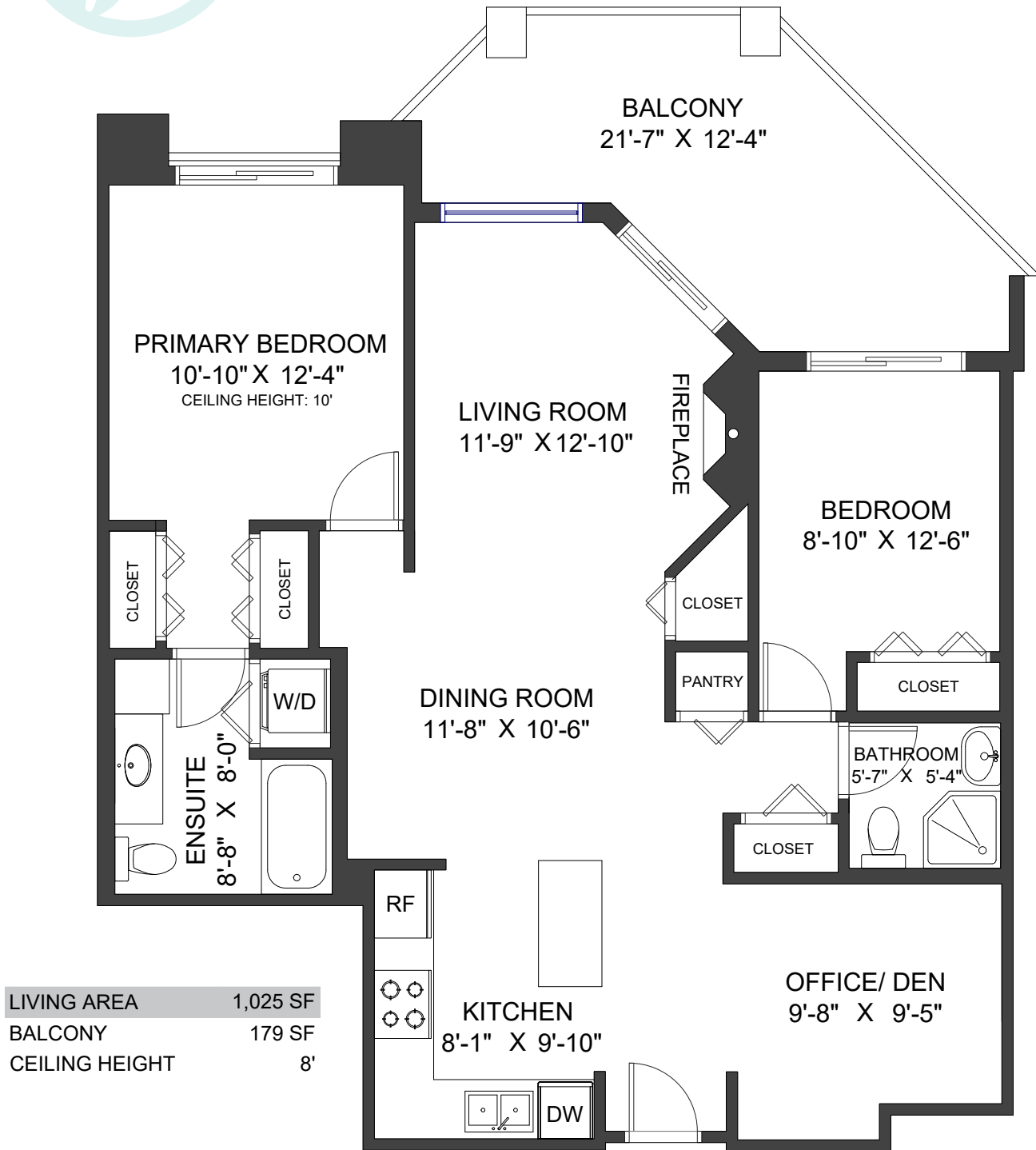




# 510-1128 SIXTH AVENUE NEW WESTMINSTER, BC



Valid Until: May 2, 2025



All dimensions are approximate and not suitable for architectural/construction use.  
This is for marketing purposes only. The measurements are approximate within +/- 2%, E&O insured.  
Total square footage might be kept consistent with strata plan. It might include unfinished area.



Lori Fralic PREC 604-312-0738 fralicrealestate.com

KW VANCENTRAL  
KELLER WILLIAMS REALTY  
EACH OFFICE IS INDEPENDENTLY OWNED AND OPERATED