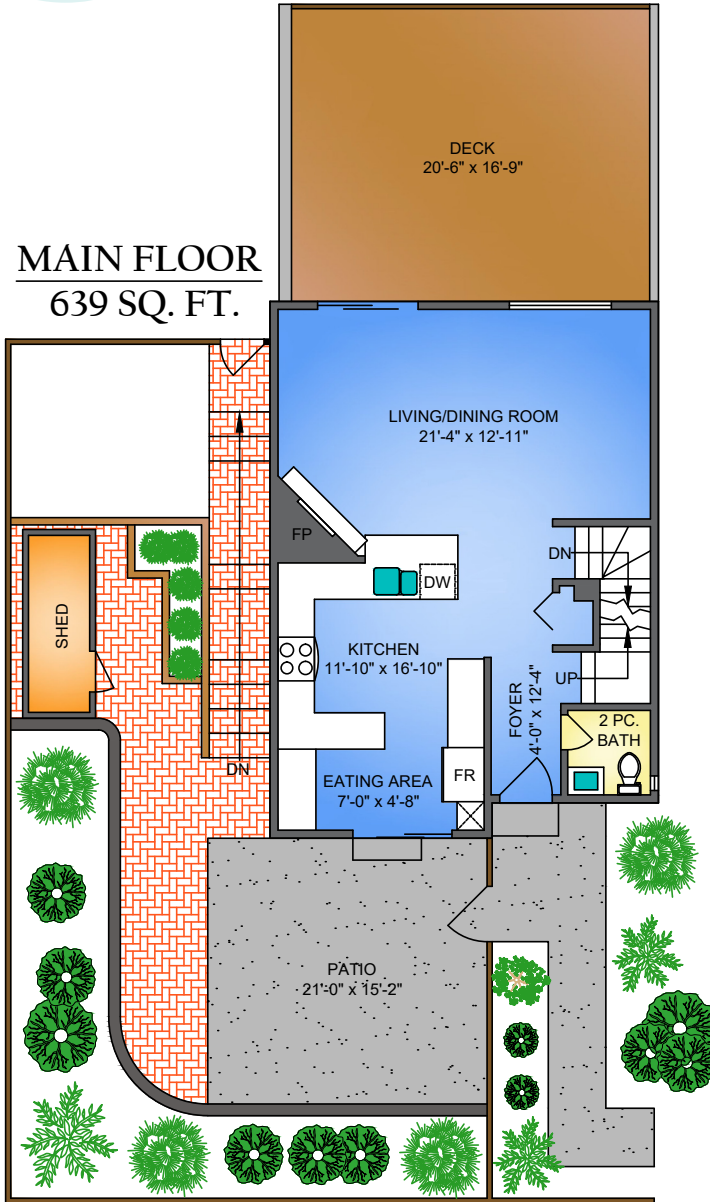


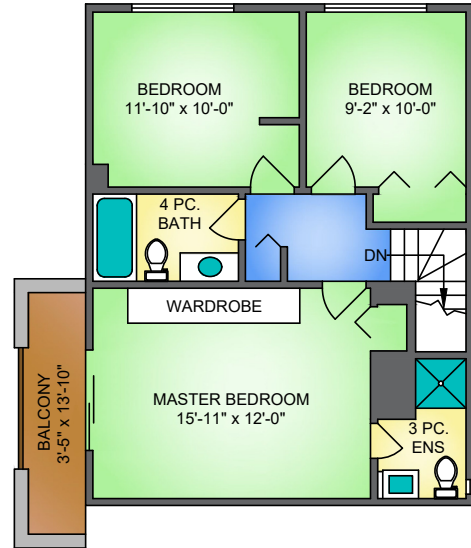


5-114 PARK ROW NEW WESTMINSTER, BC

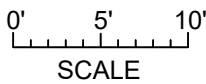
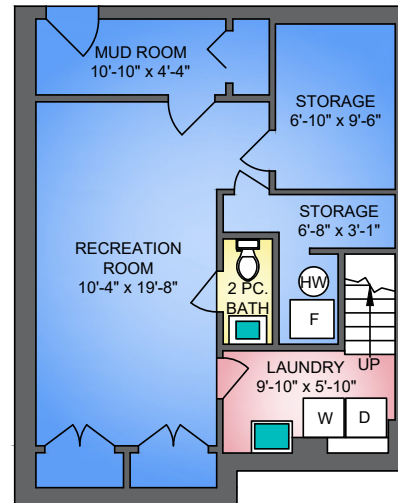
MAIN FLOOR
639 SQ. FT.



UPPER FLOOR
614 SQ. FT.



LOWER FLOOR
593 SQ. FT.



NORTH



5-114 PARK ROW, NEW WESTMINSTER		
PREPARED BY PROPER MEASURE. FOR THE EXCLUSIVE USE OF LORI FRALIC AND LESLIE GRAY. <small>PLANS MAY NOT BE 100% ACCURATE. IF CRITICAL BUYER TO VERIFY DIMENSIONS AND MEASUREMENTS ARE APPROXIMATE. THE FLOOR PLAN IS NOT INTENDED FOR ARCHITECTURAL OR CONSTRUCTION USE.</small>		
FLOOR	AREA (SQ. FT.)	
	FINISHED	DECK / PATIO
MAIN	639	696
UPPER	614	47
LOWER	593	-
TOTAL	1846	743