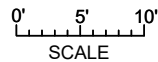
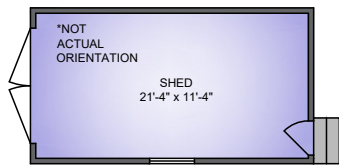
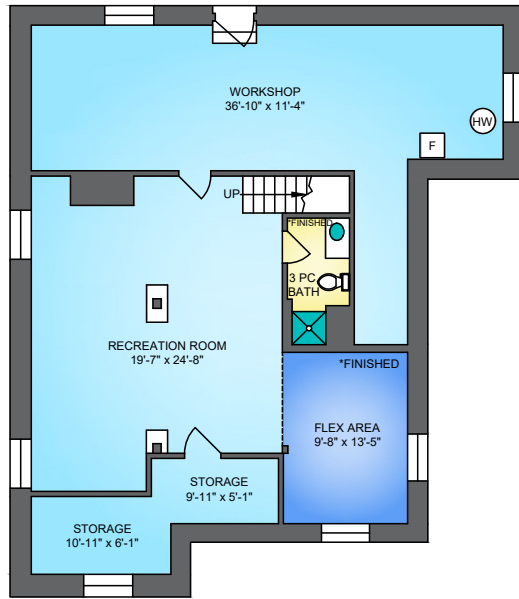


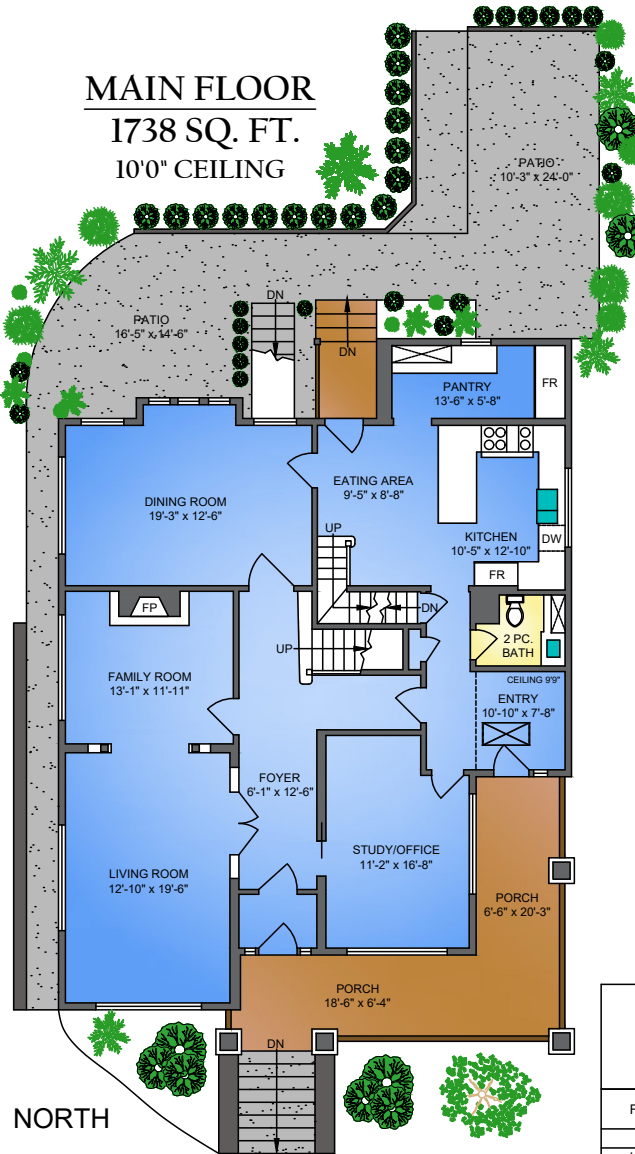
LOWER FLOOR
1522 SQ. FT.
(FINISHED+UNFINISHED)



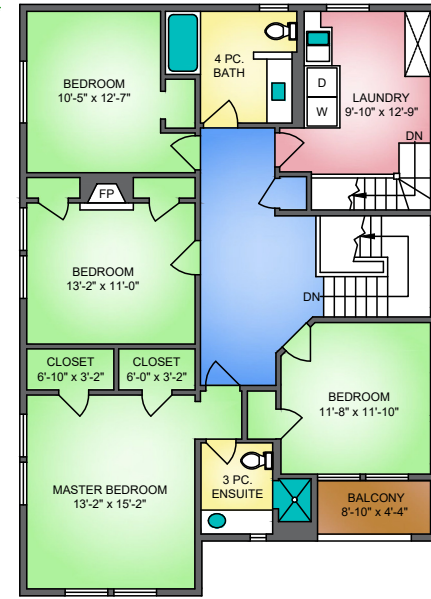
NORTH



MAIN FLOOR
1738 SQ. FT.
10'0" CEILING



UPPER FLOOR
1374 SQ. FT.
8'10" CEILING



105 THIRD AVE, NEW WESTMINSTER
NOVEMBER 28, 2020
PREPARED BY PROPER MEASURE.
FOR THE EXCLUSIVE USE OF LORI FRALIC AND LESLIE GRAY.
PLANS MAY NOT BE 100% ACCURATE. IF CRITICAL BUYER TO VERIFY DIMENSIONS AND MEASUREMENTS ARE APPROXIMATE.
THE FLOOR PLAN IS NOT INTENDED FOR ARCHITECTURAL OR CONSTRUCTION USE.

FLOOR	AREA (SQ. FT.)		
	FINISHED	UNFINISHED	DECK / PATIO
MAIN	1738	-	707
UPPER	1374	-	39
LOWER	234	1288	-
TOTAL	3346	1288	746

TOTAL SQ.FT.= 4634 (FINISHED + UNFINISHED)