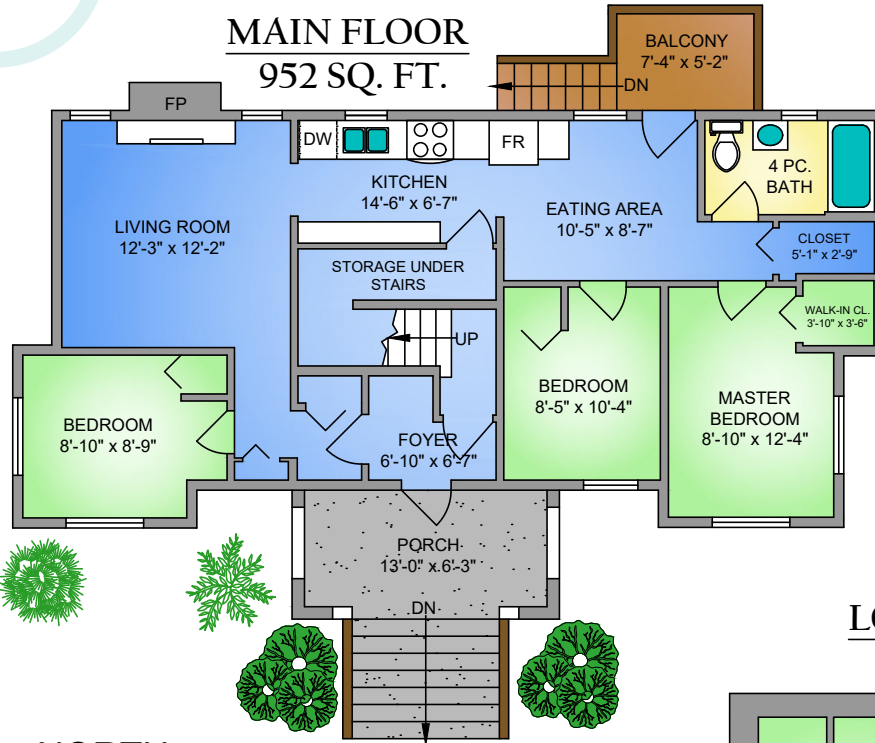


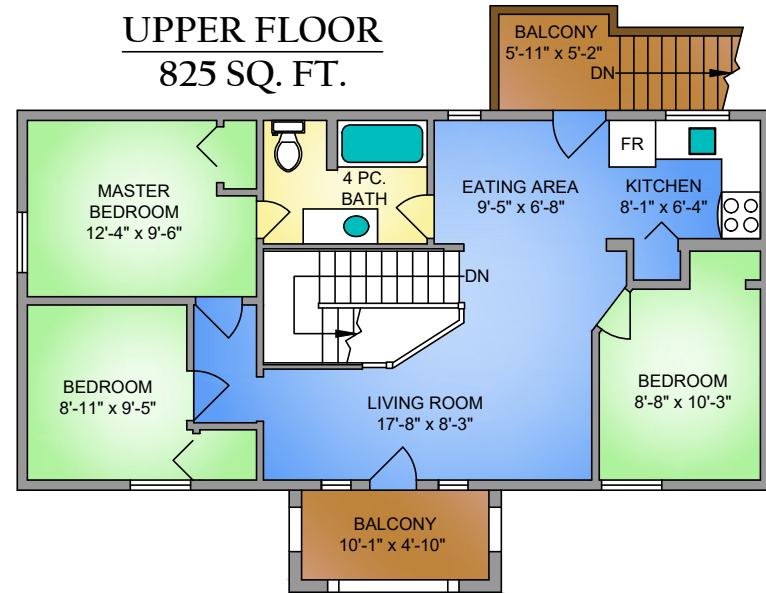


613 ROBSON AVENUE NEW WESTMINSTER, BC

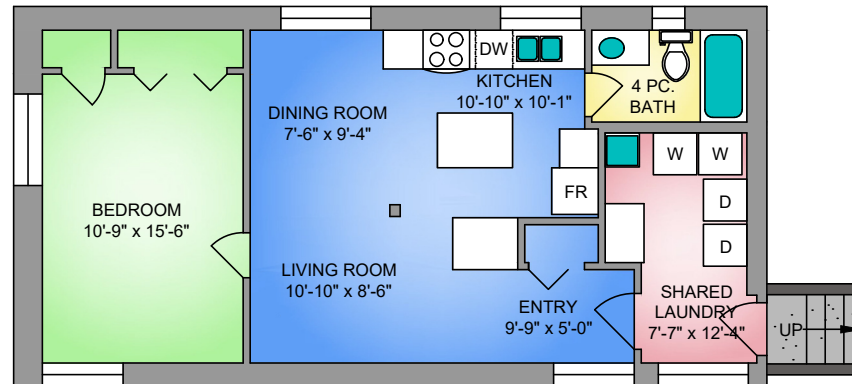
MAIN FLOOR
952 SQ. FT.



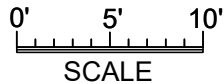
UPPER FLOOR
825 SQ. FT.



LOWER FLOOR
825 SQ. FT.



NORTH



613 ROBSON AVE, NEW WESTMINSTER
NOVEMBER 10, 2020
PREPARED BY PROPER MEASURE.
FOR THE EXCLUSIVE USE OF LORIE FRALIC AND LESLIE GRAY.
PLANS MAY NOT BE 100% ACCURATE, IF CRITICAL BUYER TO VERIFY.
DIMENSIONS AND MEASUREMENTS ARE APPROXIMATE. THE FLOOR PLAN IS NOT INTENDED FOR ARCHITECTURAL OR CONSTRUCTION USE.

FLOOR	AREA (SQ. FT.)	
	FINISHED	DECK / PATIO
MAIN	952	119
UPPER	825	79
LOWER	825	-
TOTAL	2602	198



Lori Fralic 604-312-0738

fralicrealestate.com

