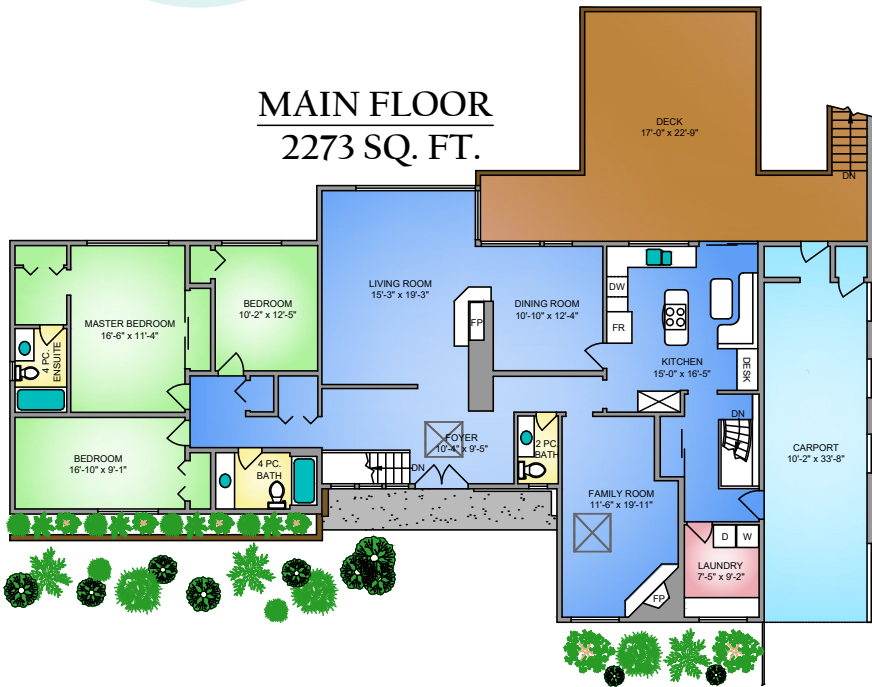


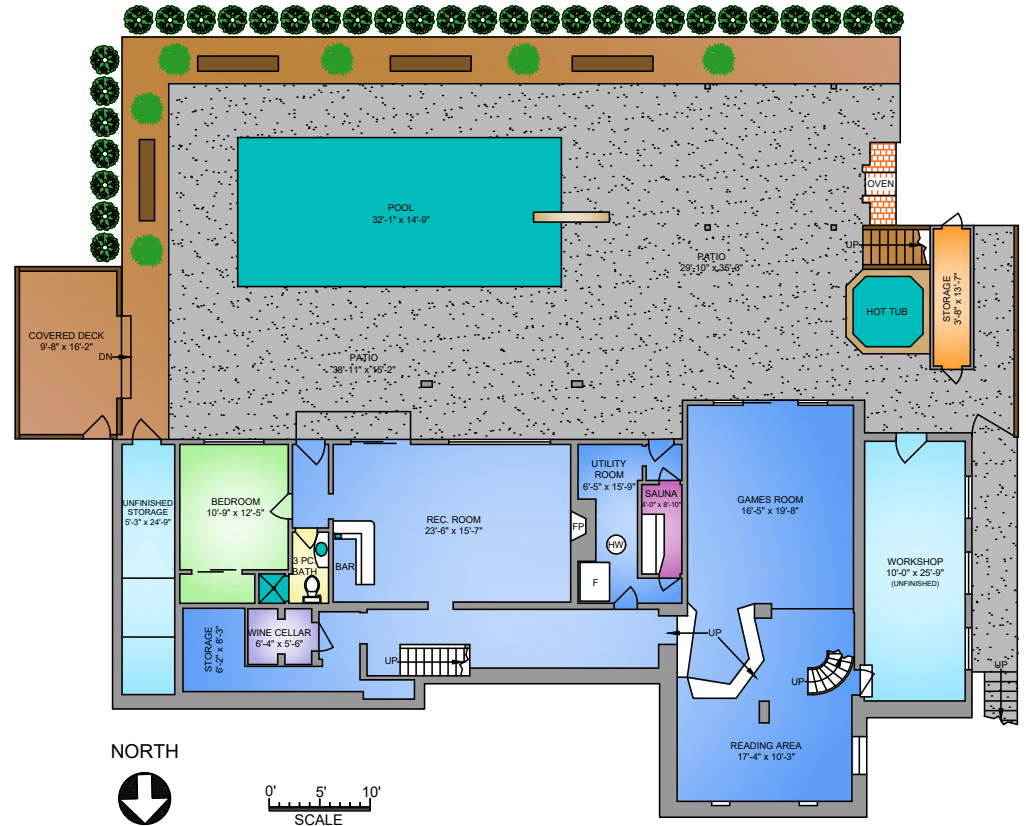


**MAIN FLOOR**  
2273 SQ. FT.



**4364 SOUTHWOOD STREET**  
BURNABY, BC

**LOWER FLOOR**  
2057 SQ. FT.



4364 SOUTHWOOD STREET, BURNABY				
OCTOBER 13, 2020				
PREPARED BY PROPER MEASURE. FOR THE EXCLUSIVE USE OF LESLIE GRAY AND LORIE FRALIC.				
PLANS MAY NOT BE 100% ACCURATE, IF CRITICAL BUYER TO VERIFY.				
DIMENSIONS AND MEASUREMENTS ARE APPROXIMATE. THE FLOOR PLAN IS NOT INTENDED FOR ARCHITECTURAL OR CONSTRUCTION USE. E&O INSURED.				
FLOOR	AREA (SQ. FT.)			
	FINISHED	UNFINISHED	CARPOT	DECK / PATIO
MAIN	2273	-	417	526
LOWER	2057	465	-	2592
<b>TOTAL</b>	<b>4330</b>	<b>465</b>	<b>417</b>	<b>3118</b>



Lori Fralic 604-312-0738

Leslie Gray PREC 604-833-7780

fralicrealestate.com



EACH OFFICE IS INDEPENDENTLY OWNED AND OPERATED