

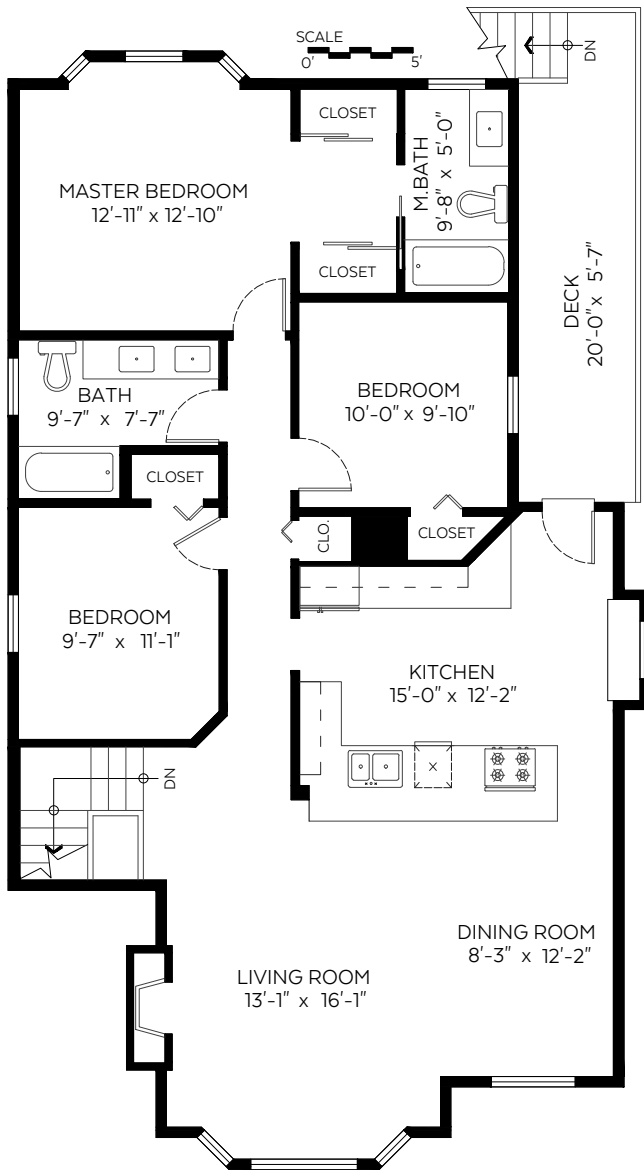


# 20487 115A AVENUE MAPLE RIDGE, BC

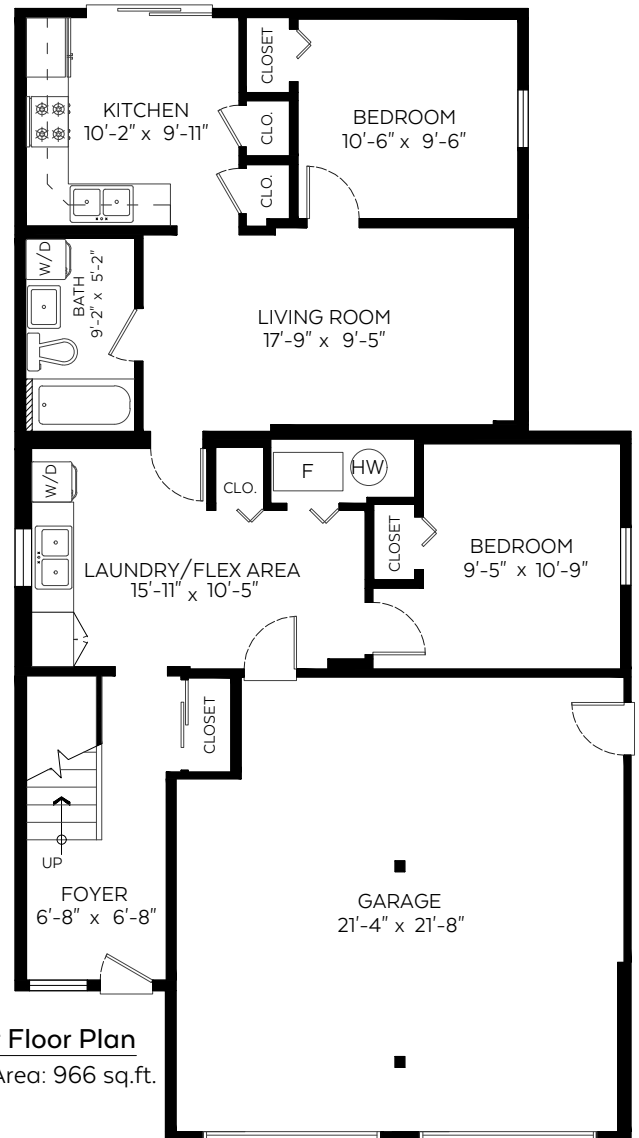
Main Floor:	1,300 sq.ft.
Lower Floor:	966 sq.ft.
<b>Total:</b>	<b>2,266 sq.ft.</b>

### Auxiliary Area

Garage:	469 sq.ft.
Deck:	122 sq.ft.



**Main Floor Plan**  
Floor Area: 1,300 sq.ft.



**Lower Floor Plan**  
Floor Area: 966 sq.ft.



**NORTH**

Measured on: September 11, 2020

The floor plan is not suitable for architectural/construction and is covered under E&O. © Excelsior Measuring Inc. 2020. All rights reserved for Excelsior Measuring Inc. Users shall not publish and distribute such material (in whole or in part) and/or incorporate it in other works in any form.