



#1002-739 PRINCESS STREET
NEW WESTMINSTER, BC

BALCONY
11'-7" x 6'-3"
(AREA: 58 SQ.FT.)

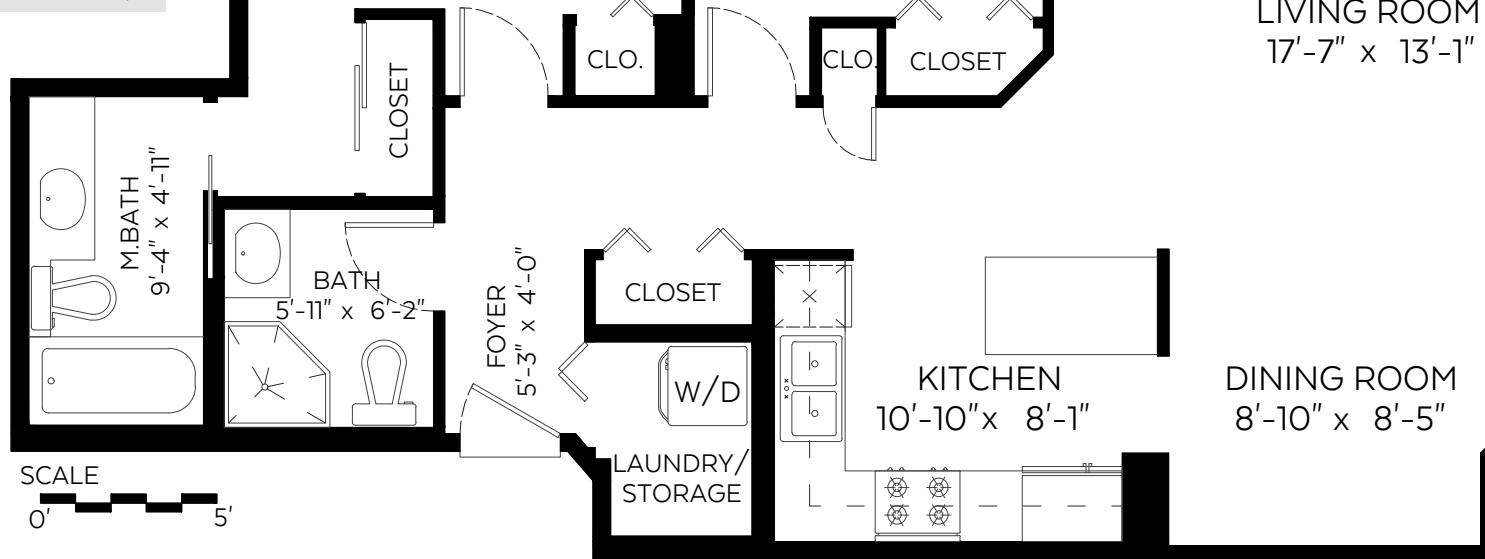
BALCONY
11'-7" x 6'-3"
(AREA: 58 SQ.FT.)

MASTER BEDROOM
12'-4" x 12'-5"

BEDROOM
9'-11" x 12'-6"

Main Floor: 1,090 sq.ft.
Ceiling Height: 8 ft.
Auxiliary Area
Balconies: 116 sq.ft.

LIVING ROOM
17'-7" x 13'-1"



Measured on: August 13, 2020



The floor plan is not suitable for architectural/construction and is covered under E.O. © Excelsior Measuring Inc. 2020. All rights reserved for Excelsior Measuring Inc. Users shall not publish and distribute such material (in whole or in part) and/or incorporate it in other works in any form.



Lori Fralic 604-312-0738

Leslie Gray PREC 604-833-7780

lorifralic.com



EACH OFFICE IS INDEPENDENTLY OWNED AND OPERATED