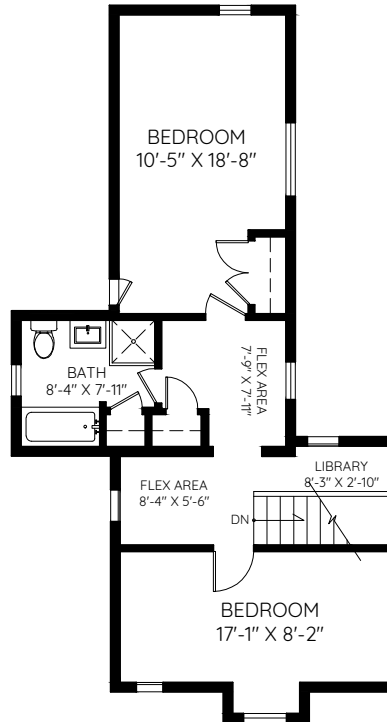
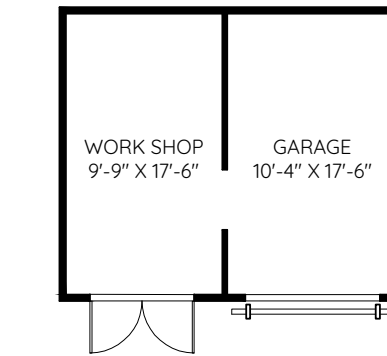
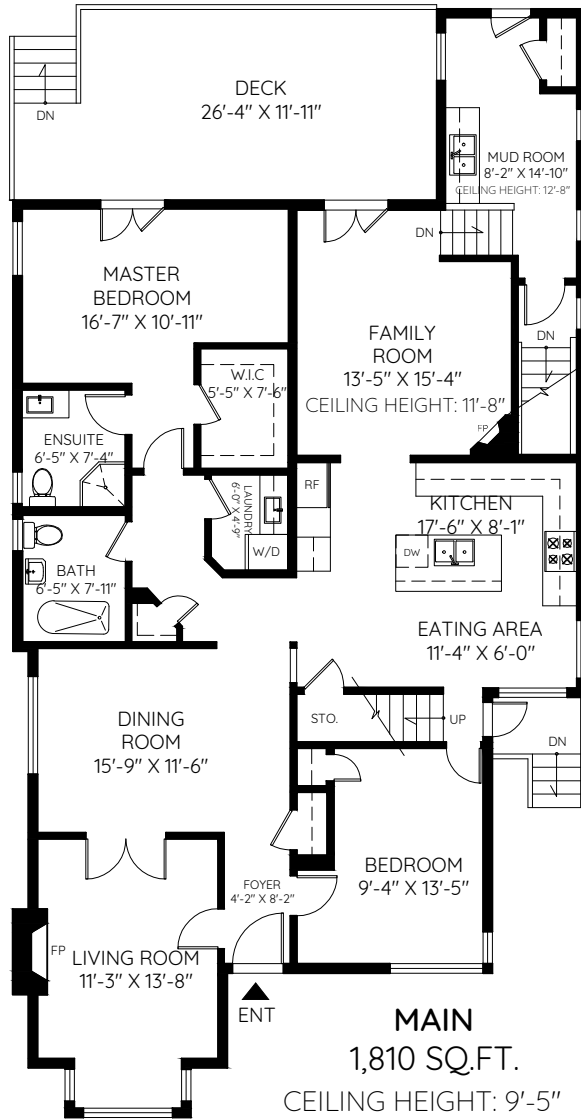
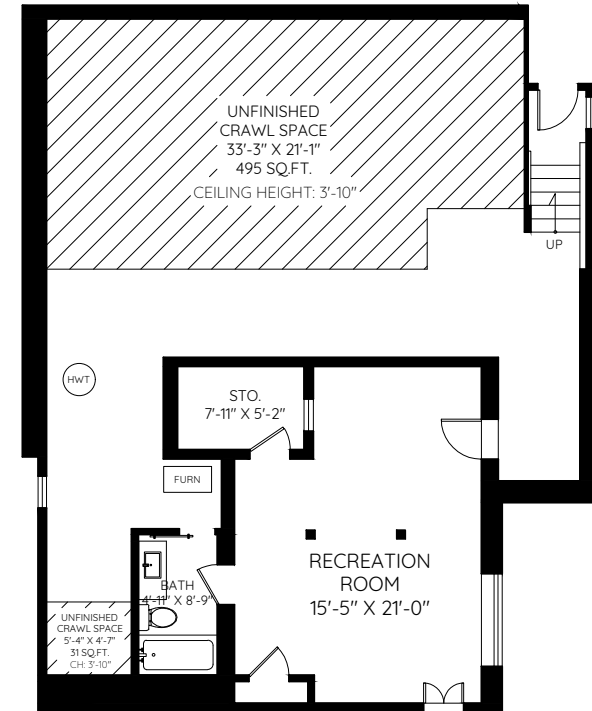


525 5TH STREET
NEW WESTMINSTER, BC

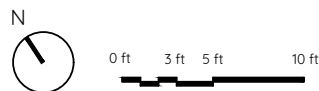
MAIN	1,810 SQ.FT.	GARAGE	200 SQ.FT.
UPPER	652 SQ.FT.	WORK SHOP	189 SQ.FT.
BASEMENT	464 SQ.FT.	DECK	297 SQ.FT.
TOTAL	2,926 SQ.FT.	TOTAL	686 SQ.FT.
UNFINISHED	423 SQ.FT.		
TOTAL AREA	3,349 SQ.FT.		



UPPER
652 SQ.FT.
CEILING HEIGHT: 8'-0"



BASEMENT
FINISHED: 464 SQ.FT.
UNFINISHED: 423 SQ.FT.
CEILING HEIGHT: 6'-3"



The floor plan and the measurements are approximate and are to be used for advertising usage only. Not suitable for architectural or construction.
 ESOE. © 2019 KEYPLAN Measuring Inc. keyplan.ca