

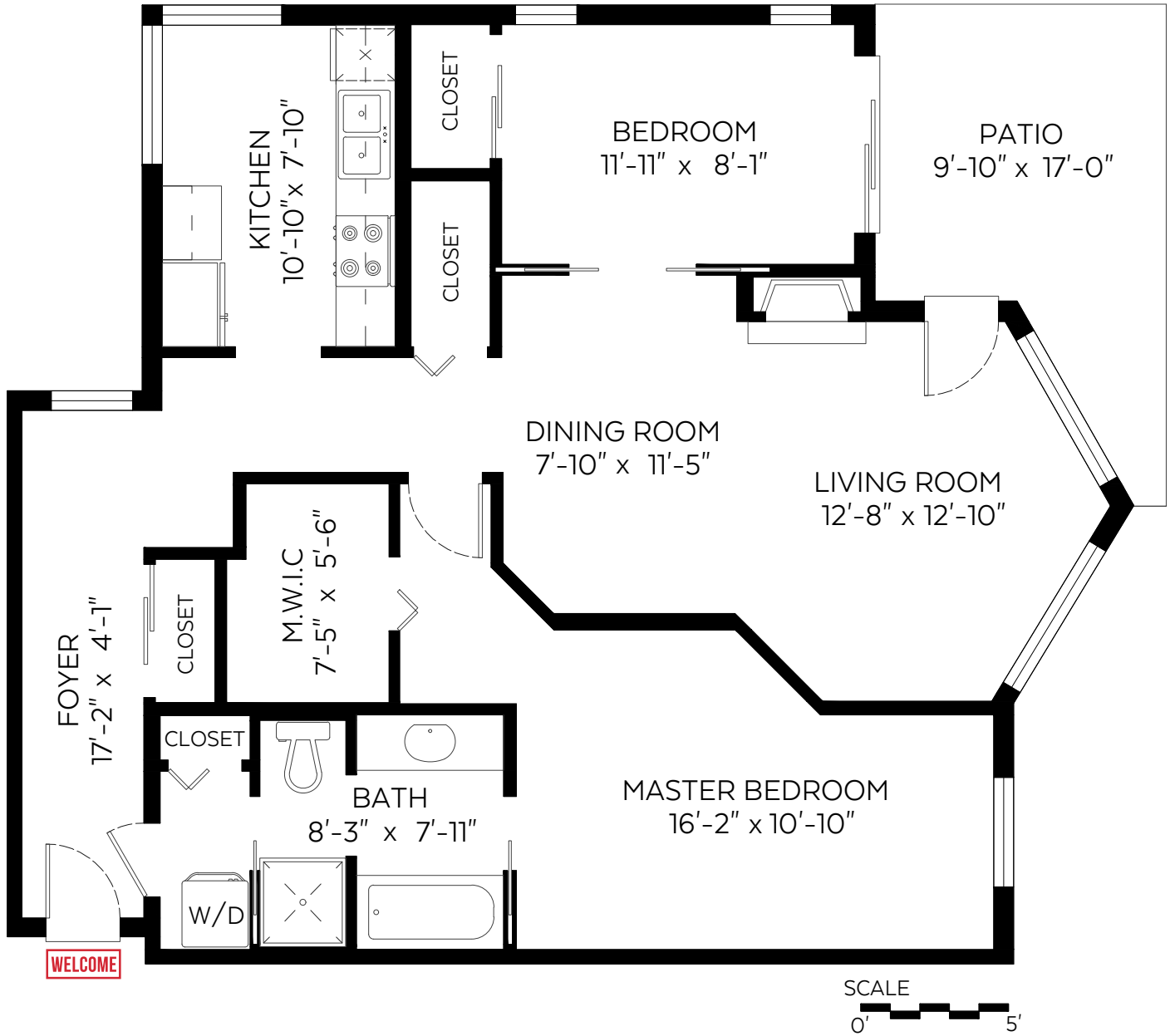


**203-48 RICHMOND STREET
NEW WESTMINSTER, BC**

Main Floor:	1,021 sq.ft.
Ceiling Height:	8 ft.

Auxiliary Area

Patio:	120 sq.ft.
--------	------------



Measured on: Mar. 27, 2019

The floor plan is not suitable for architectural/construction and is covered under E&O. © Excelsior Measuring Inc. 2019. All rights reserved for Excelsior Measuring Inc. Users shall not publish and distribute such material (in whole or in part) and/or incorporate it in other works in any form.