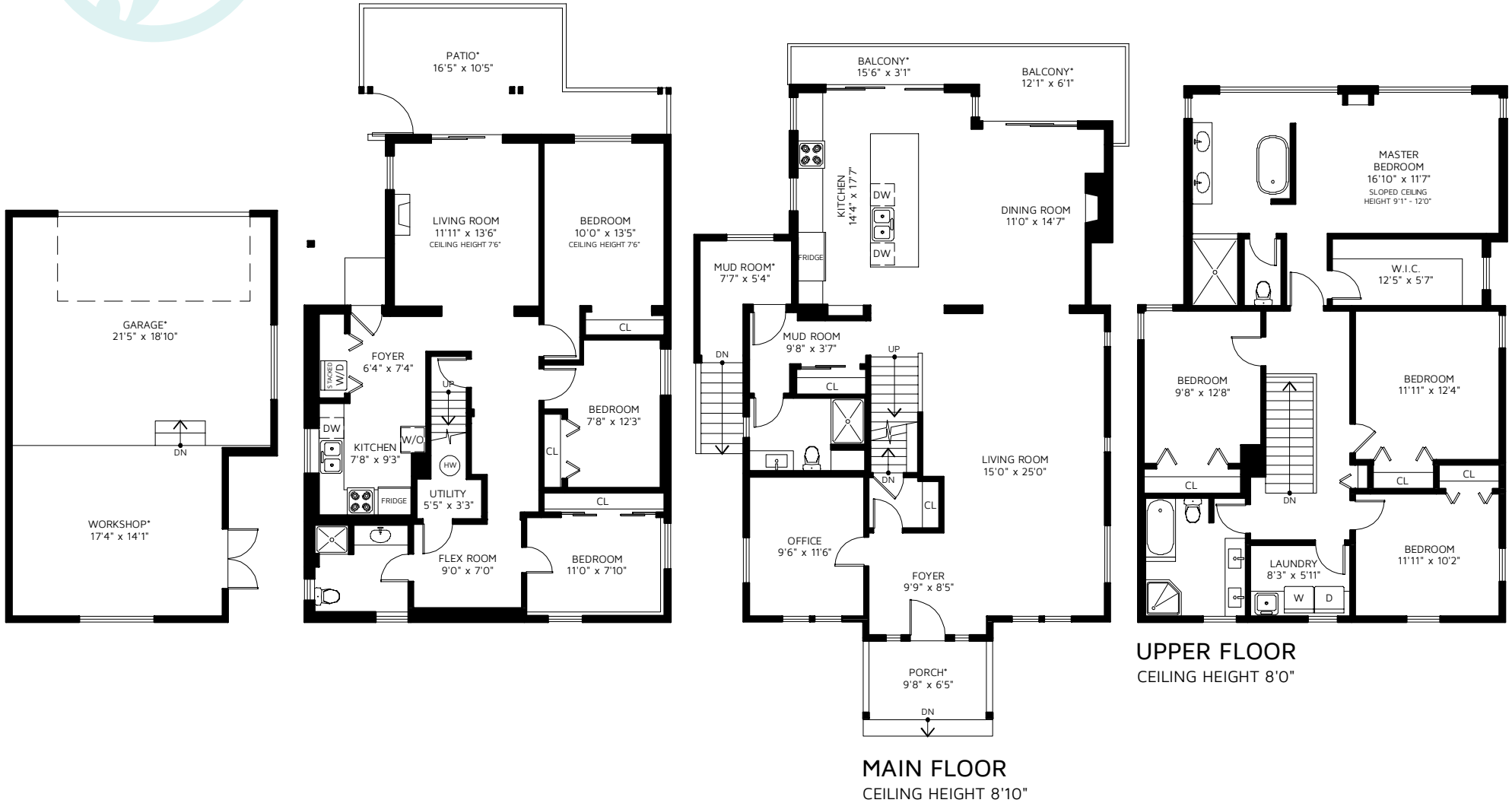




# 112 MINER STREET NEW WESTMINSTER, BC

DETACHED GARAGE*	BASEMENT CEILING HEIGHT 7'10"	PORCH*	70 SQ FT
		BALCONY*	134 SQ FT
UPPER FLOOR	1,262 SQ FT	MUD ROOM*	66 SQ FT
MAIN FLOOR	1,246 SQ FT	PATIO*	215 SQ FT
BASEMENT	1,117 SQ FT	DETACHED GARAGE*	700 SQ FT
<b>TOTAL FINISHED AREA</b>	<b>3,625 SQ FT</b>		

\*NOT INCLUDED IN OVERALL SQUARE FOOTAGE



**360**hometours.ca  
since 2006  
Floor plan provided by  
REAL Measurements & Technology

FLOOR PLAN IS PROVIDED BY REAL MEASUREMENTS AND RENDERINGS. FOR PROMOTIONAL USE ONLY. NOT FOR ARCHITECTURAL OR CONSTRUCTION USE. AREA IS CALCULATED USING ANSI Z765 - 2003 METHOD. WHILE EVERY EFFORT IS MADE TO ENSURE THE ACCURACY, DIMENSIONS AND TOTAL AREA ARE NOT GUARANTEED. E&OE