



# 327 Simpson Street, New Westminster

Main Floor: 1,208 sq.ft.  
 Upper Floor: 739 sq.ft.  
 Finished Lower Floor: 559 sq.ft.

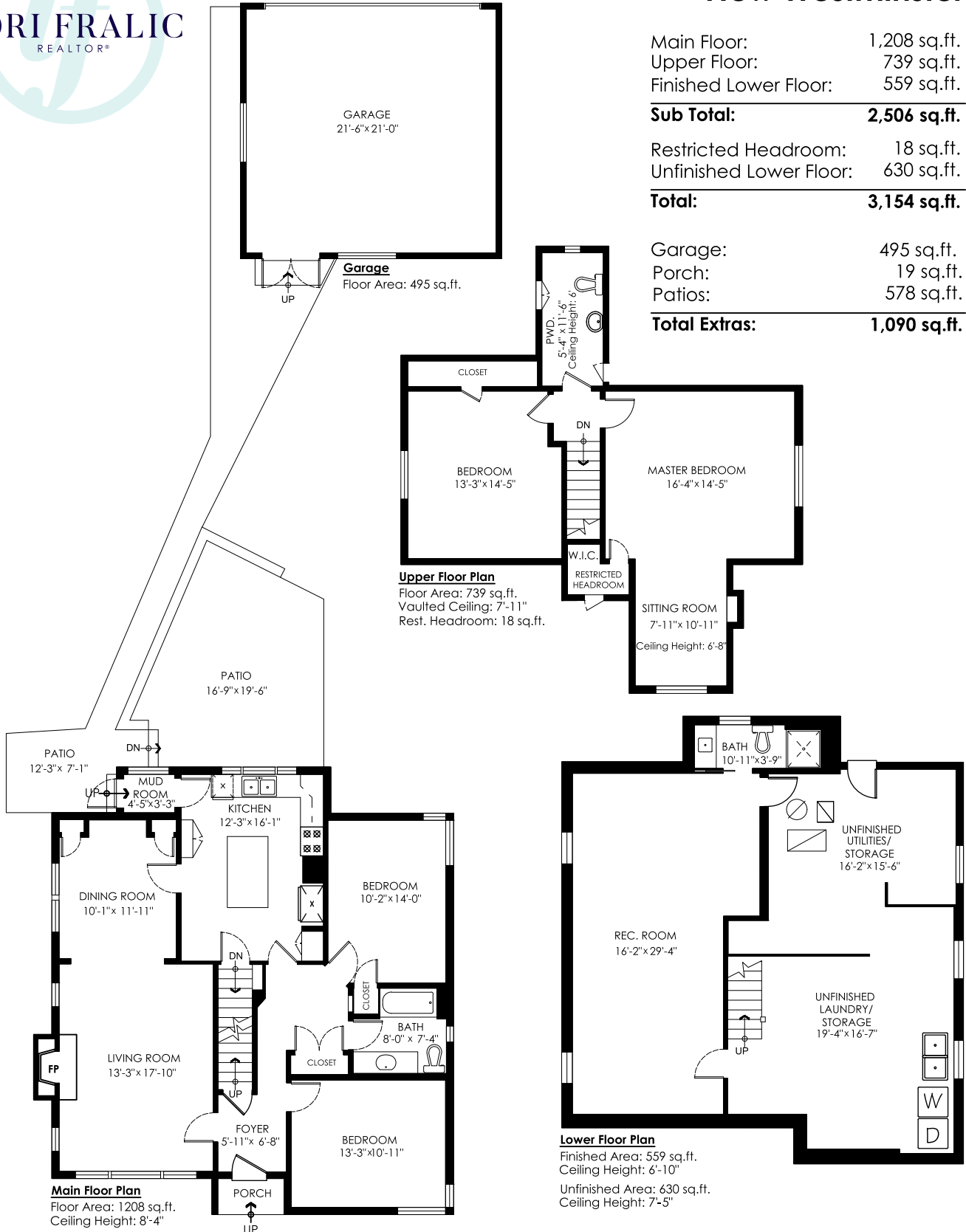
**Sub Total: 2,506 sq.ft.**

Restricted Headroom: 18 sq.ft.  
 Unfinished Lower Floor: 630 sq.ft.

**Total: 3,154 sq.ft.**

Garage: 495 sq.ft.  
 Porch: 19 sq.ft.  
 Patios: 578 sq.ft.

**Total Extras: 1,090 sq.ft.**



E&O Insured for \$3,000,000. Total square foot calculated to gross unit area. SQFT based on interior measurements to exterior walls, not taken from original blueprints, may include unfinished area. This is for marketing purposes only and is not intended for architectural/construction use. All details, sizes & placements should be considered approximate within +/- 2% tolerance.

