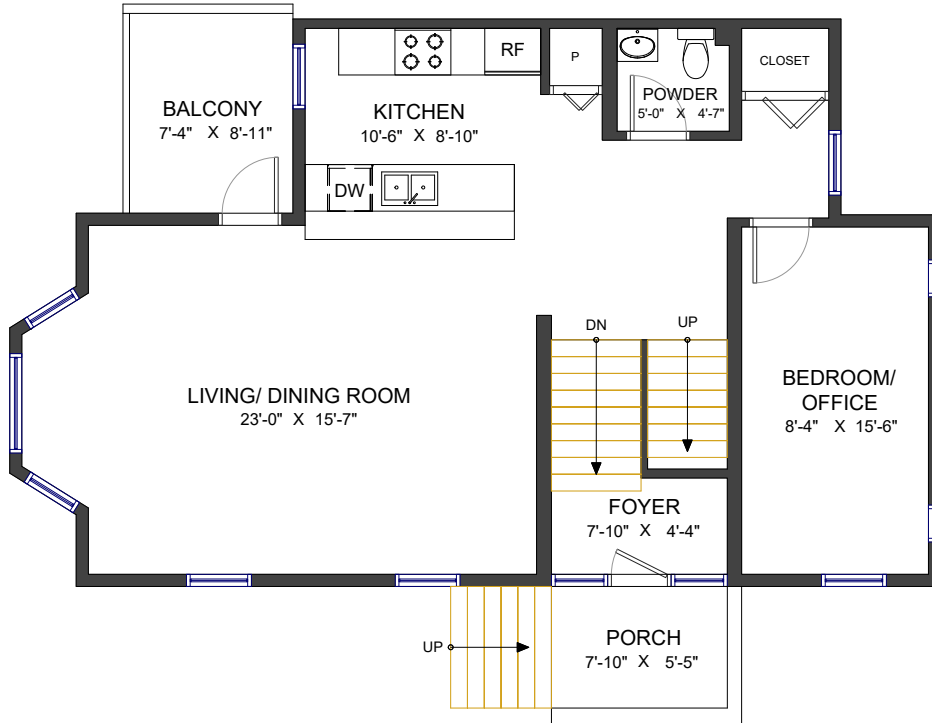




7-12 E ROYAL AVENUE NEW WESTMINSTER, BC

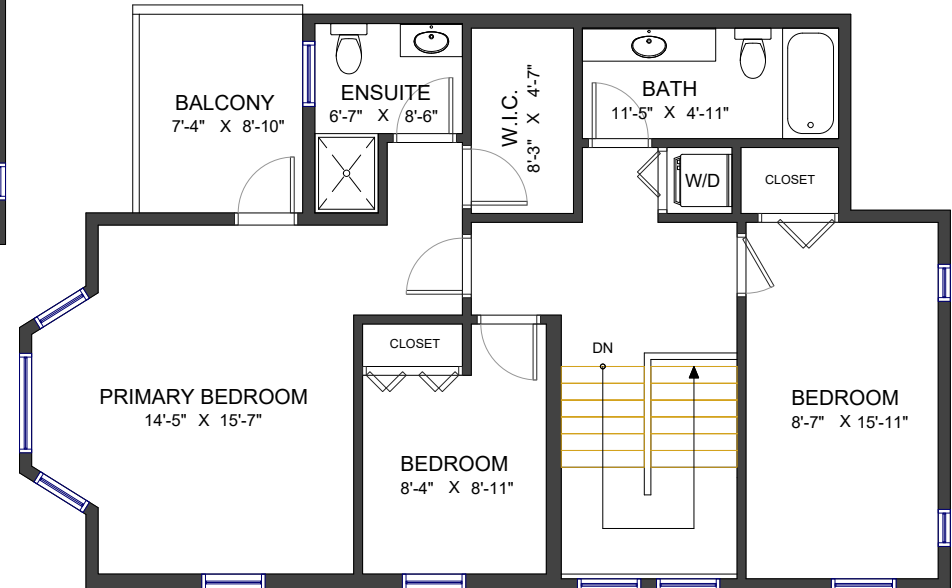
Main Floor
Ceiling Height: 9'-1"



LIVING AREA	1,773 SF
MAIN FLOOR	880 SF
UPPER FLOOR	893 SF

AUXILIARY AREA	194 SF
BALCONY	142 SF
PORCH	52 SF

Upper Floor
Ceiling Height: 9'-3"



Valid Until: May 30, 2025



All dimensions are approximate and not suitable for architectural/construction use. This is for marketing purposes only. The measurements are approximate within +/- 2%, E&O insured. Total square footage might be kept consistent with strata plan. It might include unfinished area.



Lori Fralic PREC

604-312-0738

fralicrealestate.com



EACH OFFICE IS INDEPENDENTLY OWNED AND OPERATED