



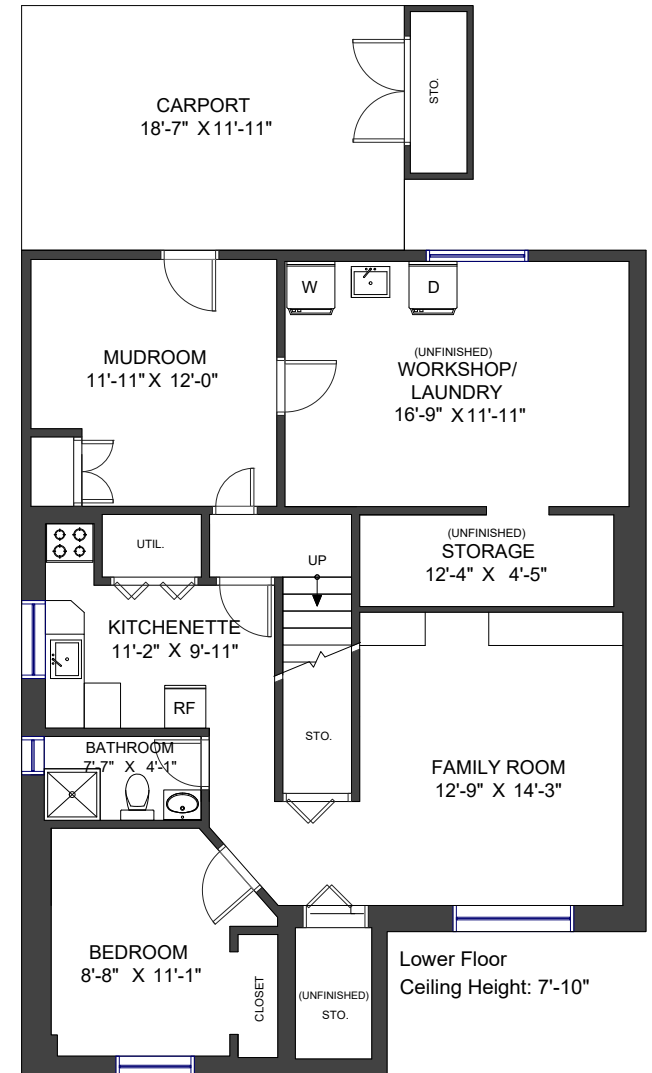
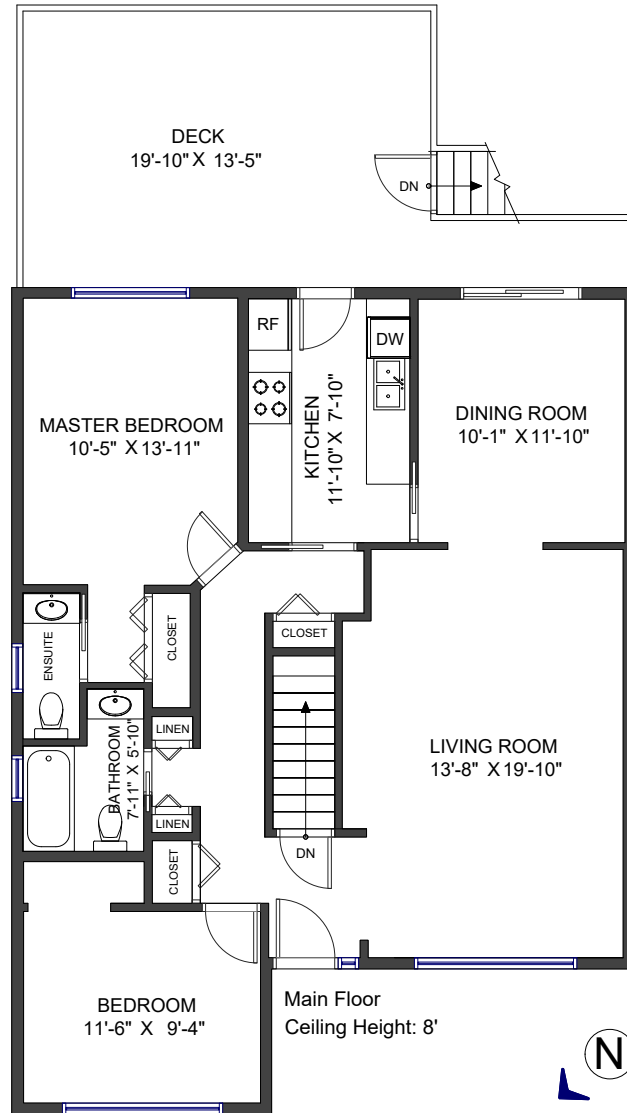
414 RICHMOND STREET NEW WESTMINSTER, BC

MAIN FLOOR	1,093 SF
LOWER FLOOR	807 SF
LIVING AREA	1,900 SF
UNFINISHED AREA	322 SF
TOTAL AREA	2,222 SF

DECK	314 SF
CARPORT	221 SF
STORAGE	28 SF
AUXILIARY AREA	563 SF

Valid Until: April 10, 2025

All dimensions are approximate and not suitable for architectural/construction use. This is for marketing purposes only. The measurements are approximate within +/- 2%. E&O insured. Total square footage might be kept consistent with strata plan. It might include unfinished area.



Lori Fralic PREC

604-312-0738

fralicrealestate.com

KW VANCENTRAL
KELLER WILLIAMS REALTY

EACH OFFICE IS INDEPENDENTLY OWNED AND OPERATED