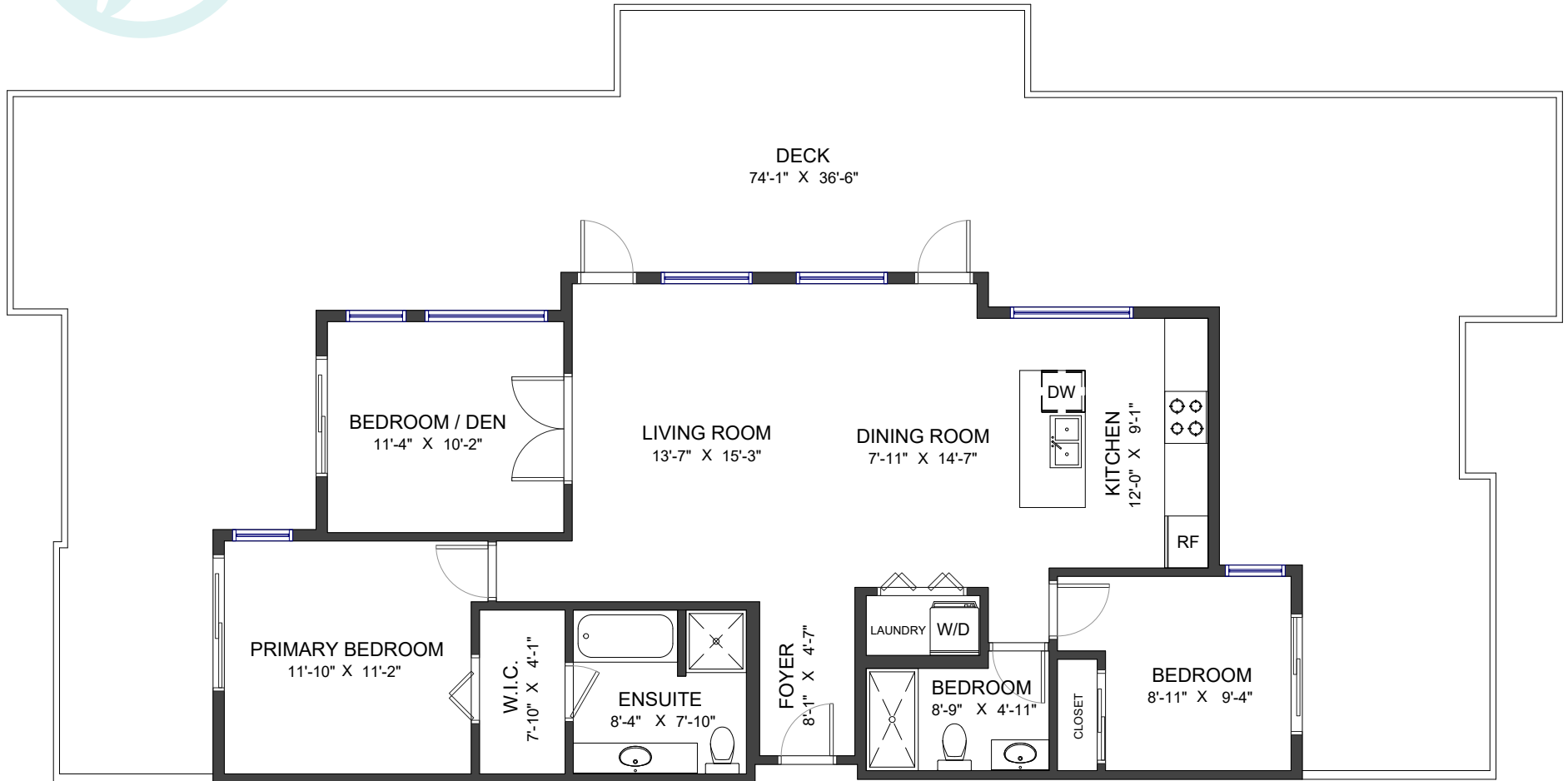




403-250 FRANCIS WAY
NEW WESTMINSTER, BC



Valid Until: April 3, 2025



All dimensions are approximate and not suitable for architectural/construction use.
 This is for marketing purposes only. The measurements are approximate within +/- 2%. E&O insured.
 Total square footage might be kept consistent with strata plan. It might include unfinished area.

| | |
|----------------|----------|
| LIVING AREA | 1,117 SF |
| DECK | 1,302 SF |
| CEILING HEIGHT | 12'-4" |



Lori Fralic PREC

604-312-0738

fralicrealestate.com



EACH OFFICE IS INDEPENDENTLY OWNED AND OPERATED