

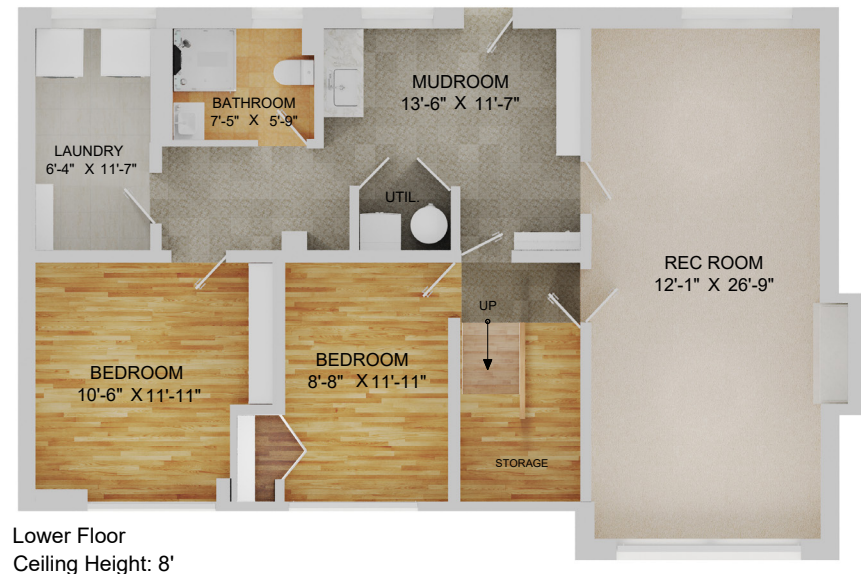


140 HARVEY STREET NEW WESTMINSTER, BC



LIVING AREA	2,316 SF
MAIN FLOOR	1,158 SF
UPPER FLOOR	1,158 SF

AUXILIARY AREA	986 SF
GARAGE	265 SF
PATIO	260 SF
DECK	461 SF



Valid Until: March 30, 2025



All dimensions are approximate and not suitable for architectural/construction use. This is for marketing purposes only. The measurements are approximate within +/- 2%, E&O insured. Total square footage might be kept consistent with strata plan. It might include unfinished area.



Lori Fralic PREC

604-312-0738

fralicrealestate.com



EACH OFFICE IS INDEPENDENTLY OWNED AND OPERATED