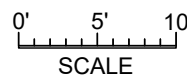
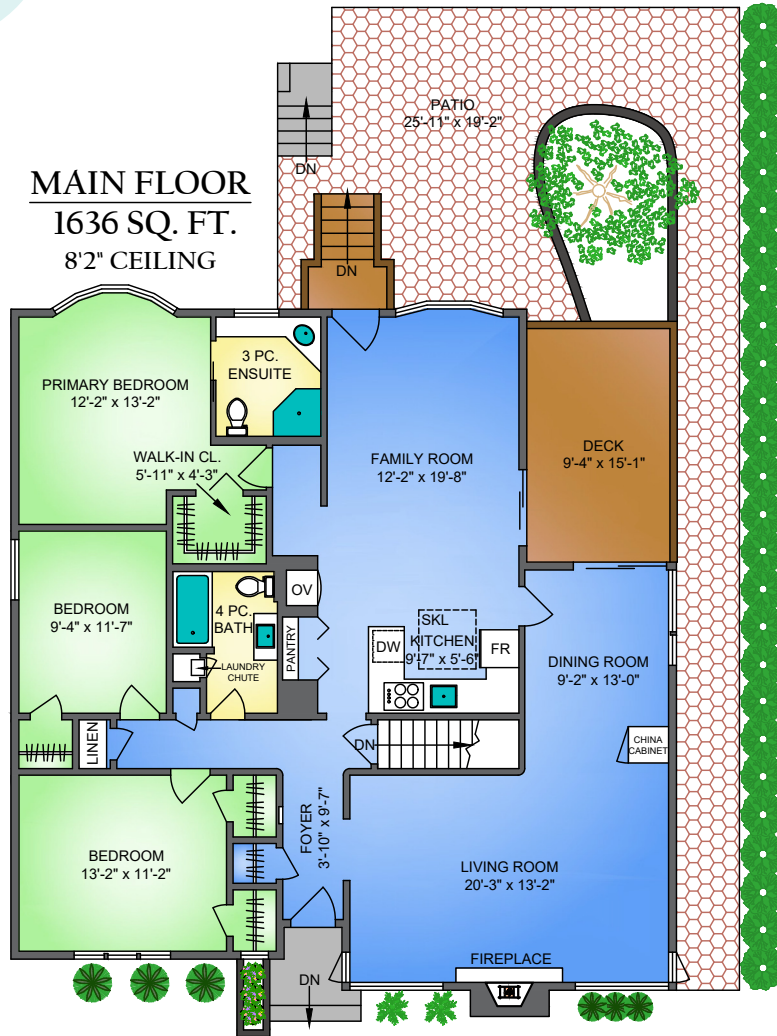


720 NINETEENTH STREET NEW WESTMINSTER, BC

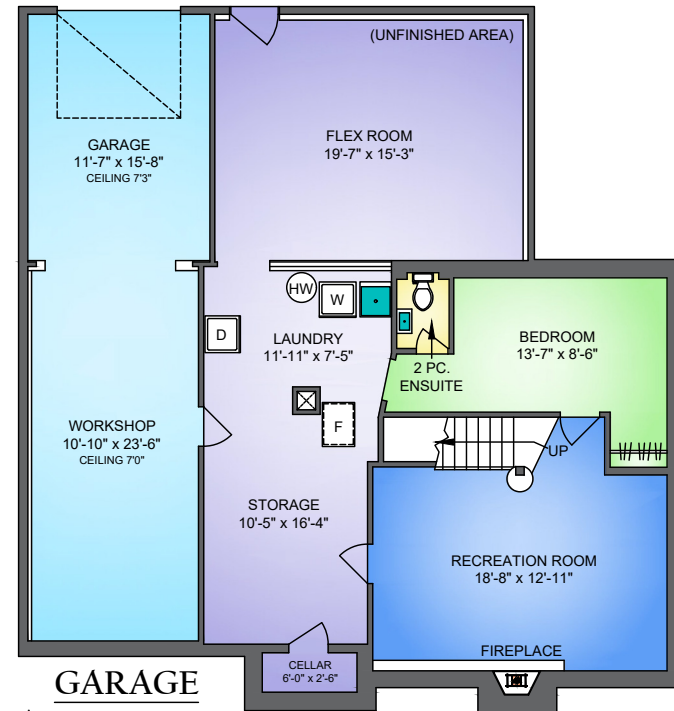
MAIN FLOOR
1636 SQ. FT.
8'2" CEILING



NORTH



LOWER FLOOR
1175 SQ. FT.
6'11" CEILING
(FINISHED+UNFINISHED)



**GARAGE
/WORKSHOP**
483 SQ. FT.
7'3"-7'0" CEILING

720 19TH STREET, NEW WESTMINSTER
OCTOBER 18, 2023
PREPARED BY PROPER MEASURE
FOR THE EXCLUSIVE USE OF LORI FRALIC.
PLANS MAY NOT BE 100% ACCURATE. IF CRITICAL BUYER TO VERIFY E&S INSURED.

FLOOR	AREA (SQ. FT.)			
	FINISHED	UNFINISHED	GARAGE /WORKSHOP	DECK / PATIO
MAIN	1636	-	-	538
LOWER	530	645	483	-
TOTAL	2166	645	483	538

TOTAL SQ. FT. = 2,811 (FINISHED+UNFINISHED)