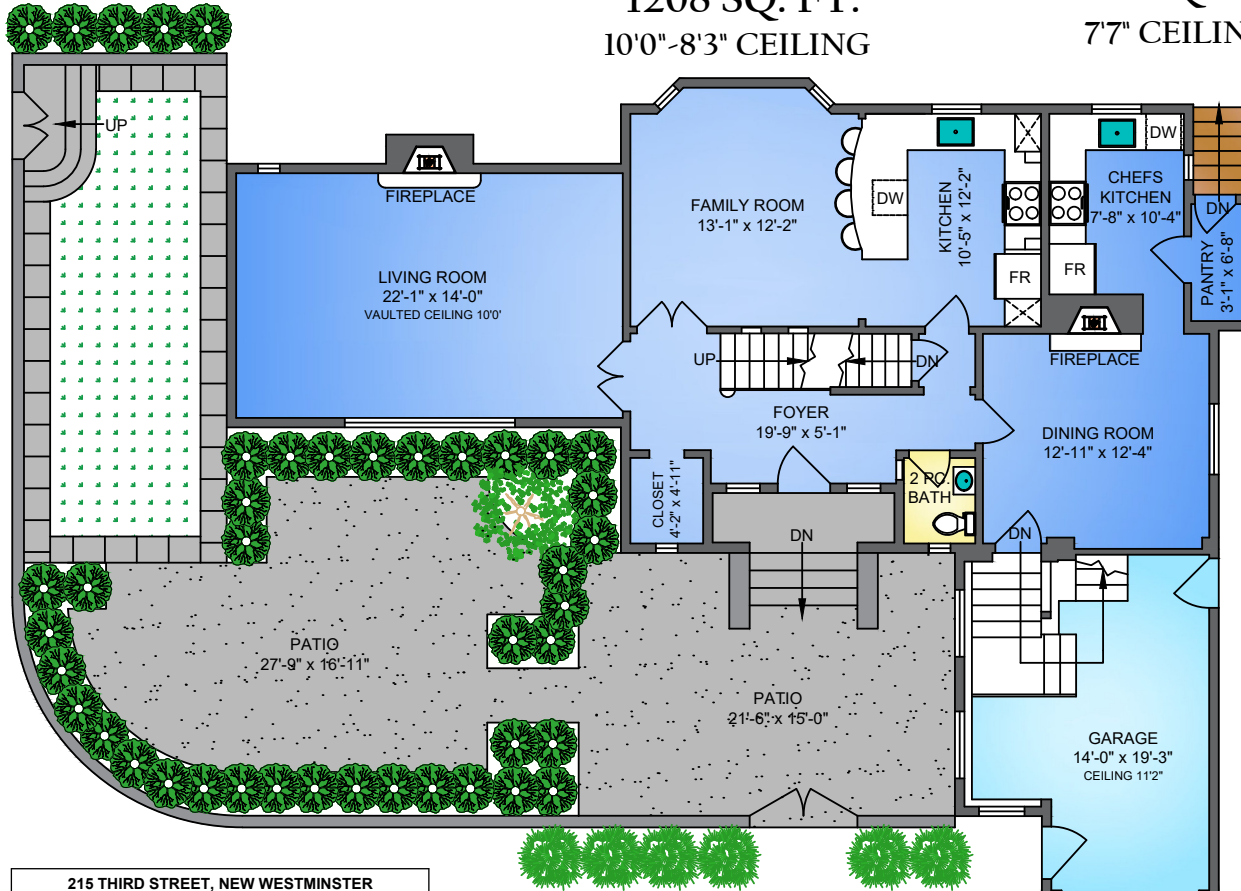
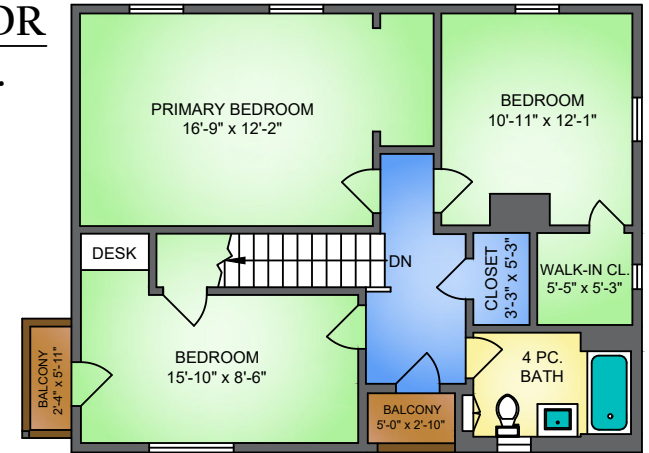


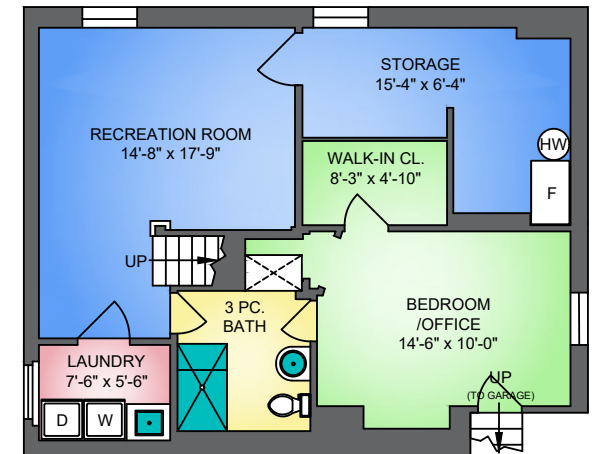
MAIN FLOOR 1208 SQ. FT. 10'0"-8'3" CEILING



UPPER FLOOR 820 SQ. FT. 7'7" CEILING



LOWER FLOOR 812 SQ. FT. 6'9" CEILING



215 THIRD STREET, NEW WESTMINSTER

PREPARED BY PROPER MEASURE.
FOR THE EXCLUSIVE USE OF LORI FRALIC AND LESLIE GRAY.
PLANS MAY NOT BE 100% ACCURATE. IF CRITICAL BUYER TO VERIFY DIMENSIONS AND MEASUREMENTS ARE APPROPRIATE.

FLOOR	AREA (SQ. FT.)		
	FINISHED	GARAGE	DECK / PATIO
MAIN	1208	290	646
UPPER	820	-	28
LOWER	812	-	-
TOTAL	2840	290	674

