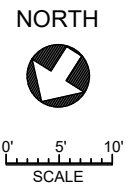
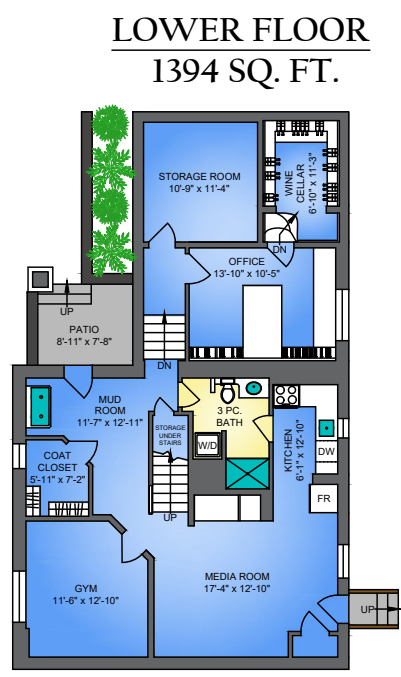
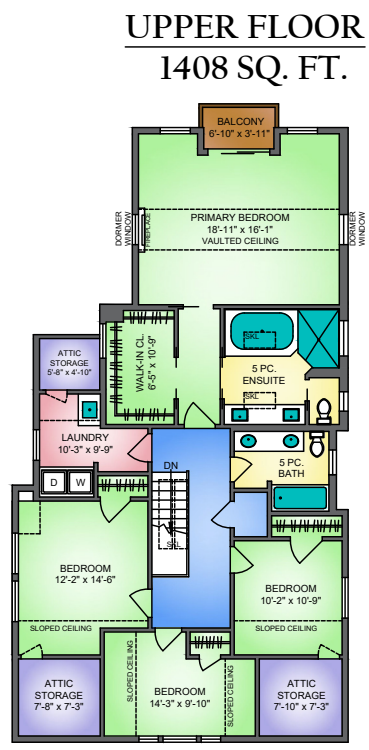
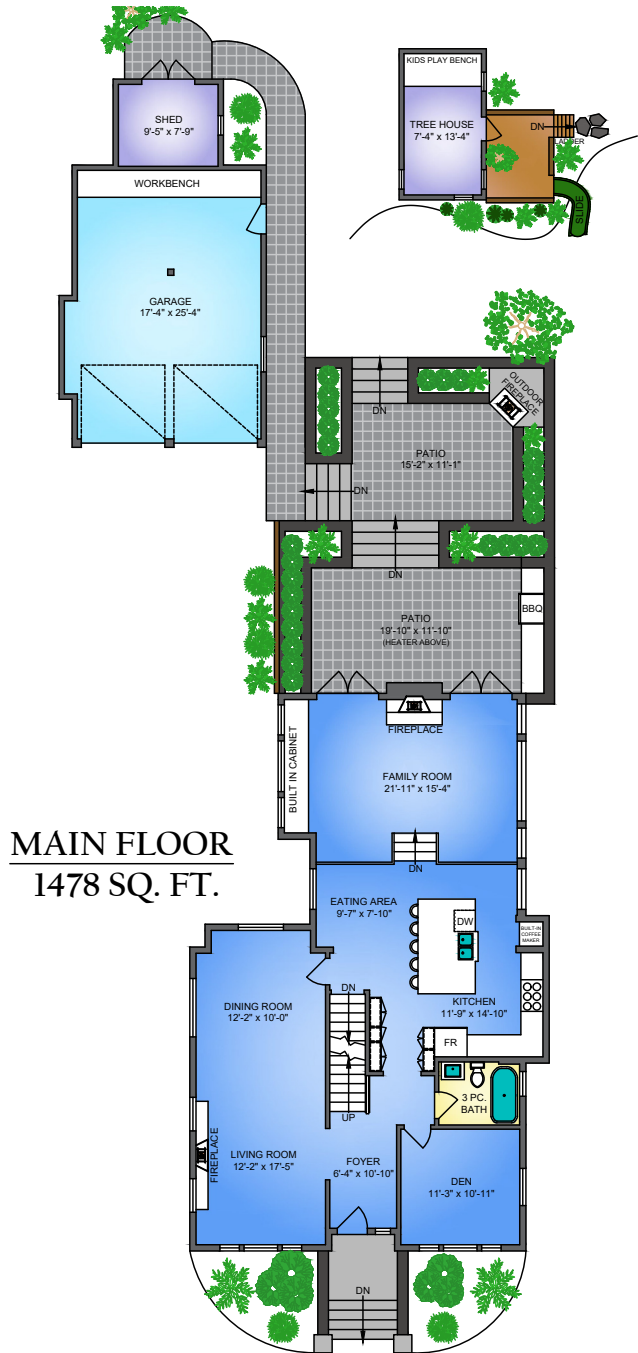




# 212 FOURTH AVENUE NEW WESTMINSTER, BC



**212 4TH AVE, NEW WESTMINSTER**  
APRIL 5, 2023  
PREPARED BY PROPER MEASURE.  
FOR THE EXCLUSIVE USE OF LORI FRALIC AND LESLIE GRAY.  
PLANS MAY NOT BE 100% ACCURATE, IF CRITICAL BUYER TO VERIFY DIMENSIONS AND MEASUREMENTS ARE APPROXIMATE & INSURED.

FLOOR	AREA (SQ. FT.)				
	FINISHED	GARAGE	TREE HOUSE	ATTIC	DECK / PATIO
MAIN	1478	496	117	-	400
UPPER	1408	-	-	165	26
LOWER	1394	-	-	-	59
<b>TOTAL</b>	<b>4280</b>	<b>496</b>	<b>117</b>	<b>165</b>	<b>485</b>