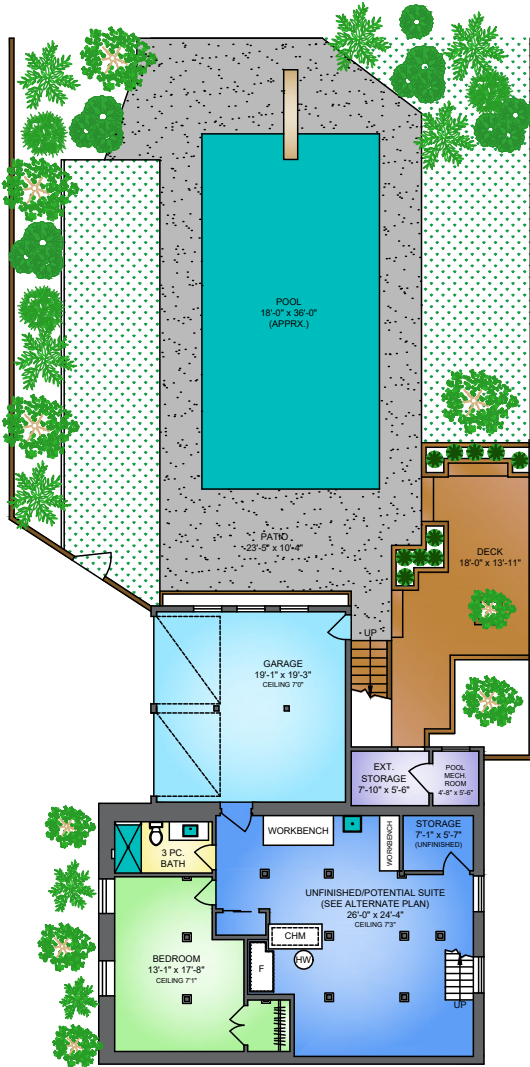


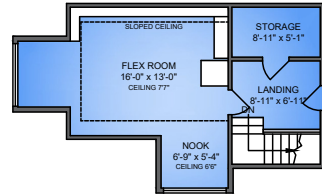


# 314 SECOND STREET NEW WESTMINSTER, BC

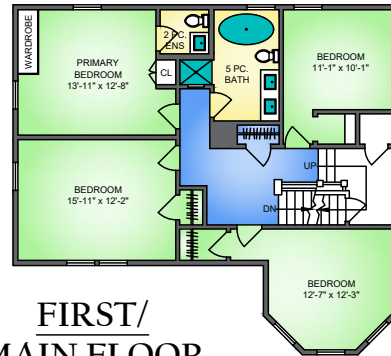
## BASEMENT FLOOR 1025 SQ. FT. 73"-71" CEILING



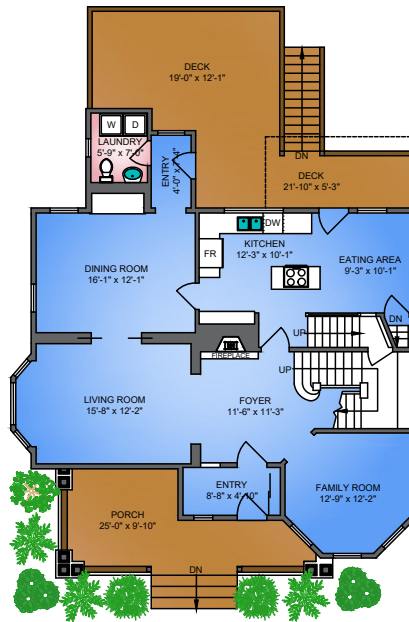
## THIRD FLOOR 468 SQ. FT. 77" CEILING



## SECOND FLOOR 1133 SQ. FT. 9'0" CEILING



## FIRST/ MAIN FLOOR 1305 SQ. FT. 10'2"- 8'5" CEILING



**314 2ND STREET, NEW WESTMINSTER**  
JANUARY 31, 2023  
PREPARED BY PROPER MEASURE.  
FOR THE EXCLUSIVE USE OF LORI FRALIC AND LESLIE GRAY.  
PLANS MAY NOT BE 100% ACCURATE. IF CRITICAL REFER TO VERIFY AND INSURE.

| FLOOR                                     | AREA (SQ. FT.) |            |            |              |
|---|----------------|------------|------------|--------------|
|   | FINISHED       | UNFINISHED | GARAGE     | DECK / PATIO |
| BASEMENT                                  | 403            | 622        | 401        | 502          |
| FIRST/MAIN                                | 1305           | -          | -          | 520          |
| SECOND                                    | 1133           | -          | -          | -            |
| THIRD                                     | 468            | -          | -          | -            |
| <b>TOTAL</b>                              | <b>3309</b>    | <b>622</b> | <b>401</b> | <b>1022</b>  |
| TOTAL SQ.FT. = 3931 (FINISHED+UNFINISHED) |                |            |            |              |

NORTH



0' 5' 10'  
SCALE