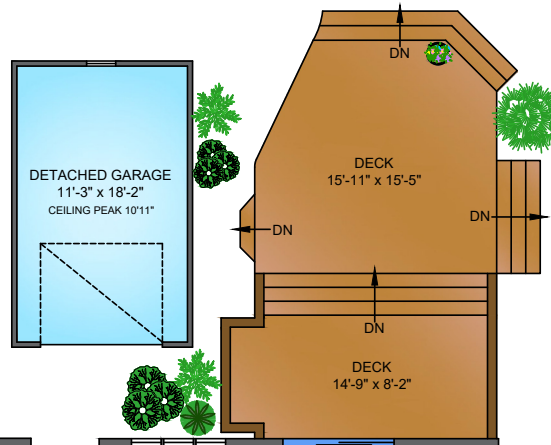


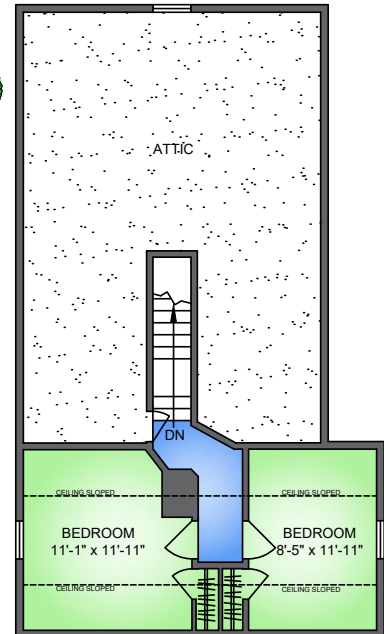


427 FIFTH STREET NEW WESTMINSTER, BC

MAIN FLOOR
1222 SQ. FT.
9'4"-7'10" CEILING



UPPER FLOOR
357 SQ. FT.
7'7" CEILING

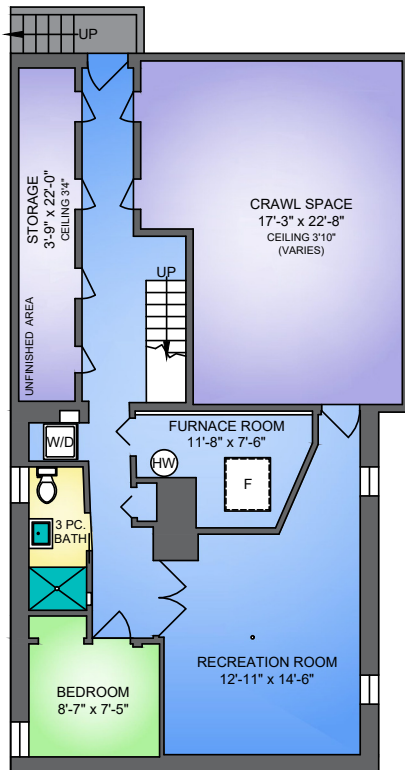


LOWER FLOOR

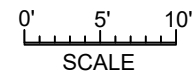
827 SQ. FT.

6'6" CEILING

(FINISHED + UNFINISHED)



NORTH



427 5TH STREET, NEW WESTMINSTER
OCTOBER 13, 2022
PREPARED BY PROPER MEASURE.
FOR THE EXCLUSIVE USE OF LORI FRALIC AND LESLIE GRAY.
PLANS MAY NOT BE 100% ACCURATE. IF CRITICAL BUYER TO VERIFY DIMENSIONS AND MEASUREMENTS ARE APPROXIMATE.

| FLOOR | AREA (SQ. FT.) | | | | |
|-------|----------------|------------|-------------|--------|--------------|
| | FINISHED | UNFINISHED | CRAWL SPACE | GARAGE | DECK / PATIO |
| MAIN | 1222 | - | - | 225 | 489 |
| UPPER | 357 | - | - | - | - |
| LOWER | 730 | 97 | 372 | - | - |
| TOTAL | 2309 | 97 | 372 | 225 | 489 |