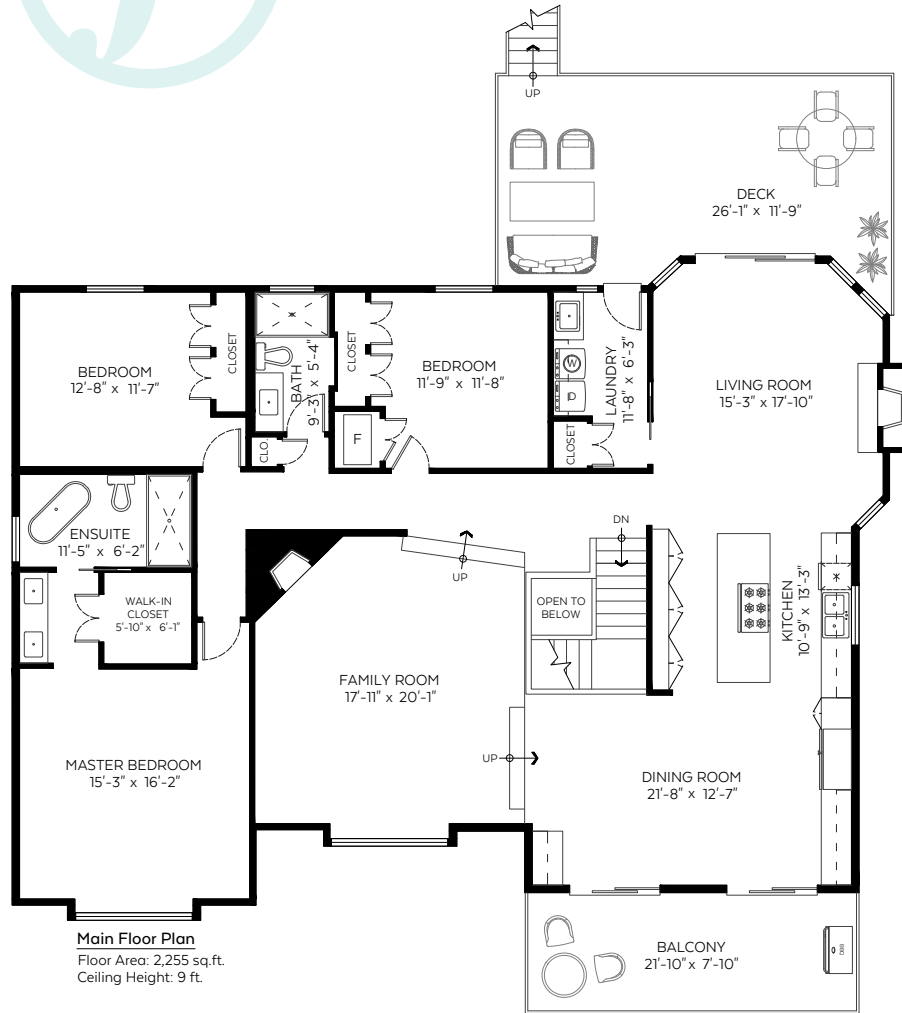




7888 MEADOWOOD DRIVE BURNABY, BC

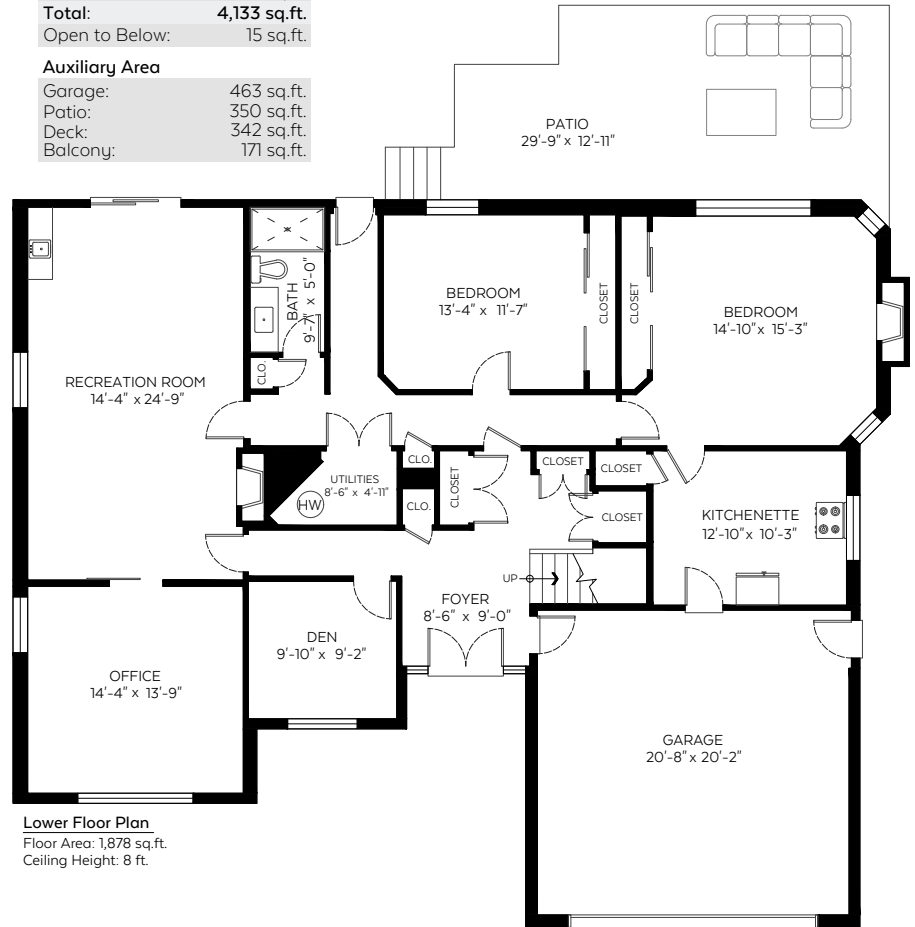


Main Floor Plan
 Floor Area: 2,255 sq.ft.
 Ceiling Height: 9 ft.

Main Floor:	2,255 sq.ft.
Lower Floor:	1,878 sq.ft.
Total:	4,133 sq.ft.
Open to Below:	15 sq.ft.

Auxiliary Area

Garage:	463 sq.ft.
Patio:	350 sq.ft.
Deck:	342 sq.ft.
Balcony:	171 sq.ft.



Lower Floor Plan
 Floor Area: 1,878 sq.ft.
 Ceiling Height: 8 ft.



Valid Until: January 16, 2023

The floor plan is not suitable for architectural/construction and is covered under E&O. © Excelsior Measuring Inc. 2022. All rights reserved for Excelsior Measuring Inc. Users shall not publish and distribute such material (in whole or in part) and/or incorporate it in other works in any form.



Lori Fralic PREC **604-312-0738** Leslie Gray PREC **604-833-7780** fralicrealestate.com



EACH OFFICE IS INDEPENDENTLY OWNED AND OPERATED