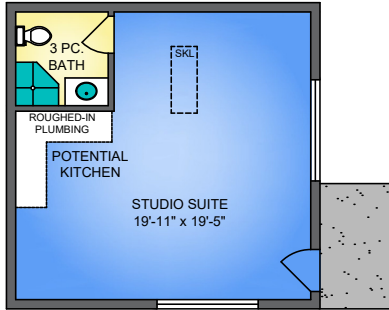


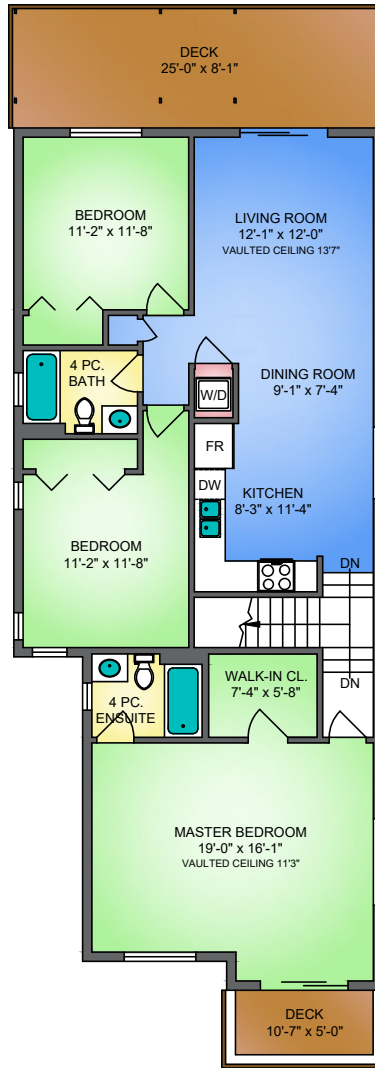
# 346 HOSPITAL STREET NEW WESTMINSTER, BC



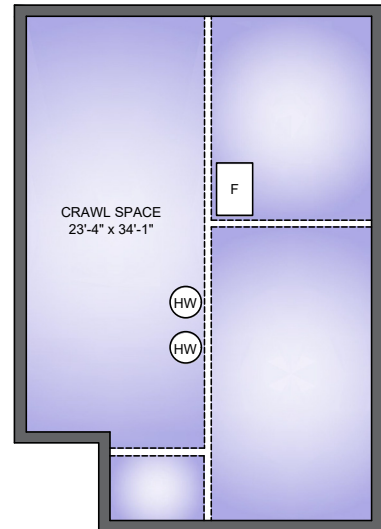
**STUDIO**  
438 SQ. FT.  
7'11" CEILING



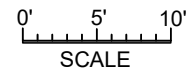
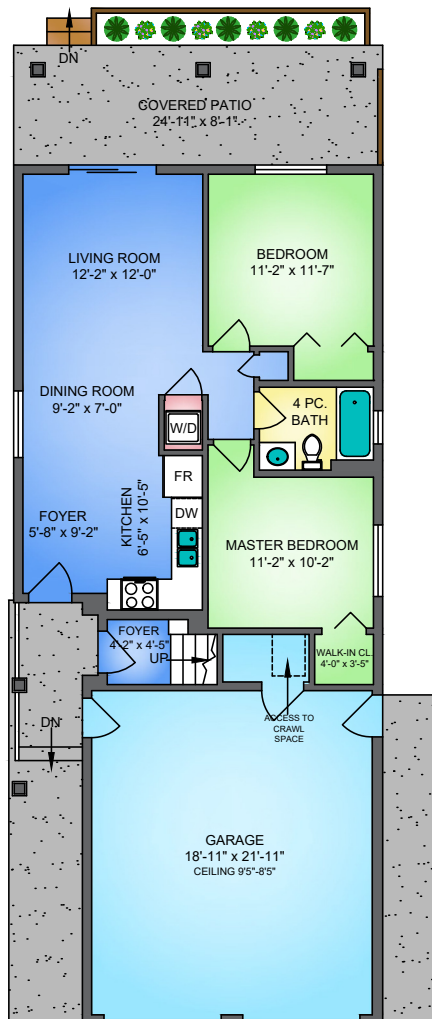
**UPPER FLOOR**  
1327 SQ. FT.  
13'7\"/>



**CRAWL SPACE**  
851 SQ. FT.  
4'0" CEILING



**MAIN FLOOR**  
831 SQ. FT.  
8'10" CEILING



346 HOSPITAL STREET, NEW WESTMINSTER					
MARCH 7, 2022					
PREPARED BY PROPER MEASURE.					
FOR THE EXCLUSIVE USE OF LORI FRALIC AND LESLIE GRAY.					
PLANS MAY NOT BE 100% ACCURATE. IF CRITICAL BUYER TO VERIFY DIMENSIONS AND MEASUREMENTS ARE APPROXIMATE.					
FLOOR	AREA (SQ. FT.)				
	FINISHED	GARAGE	STUDIO	CRAWL SPACE	DECK / PATIO
MAIN	831	480	438	-	201
UPPER	1327	-	-	-	255
LOWER	-	-	-	851	-
<b>TOTAL</b>	<b>2158</b>	<b>480</b>	<b>438</b>	<b>851</b>	<b>456</b>