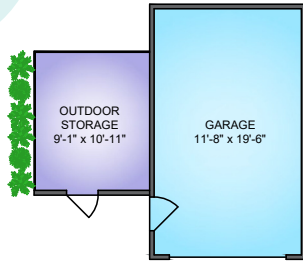




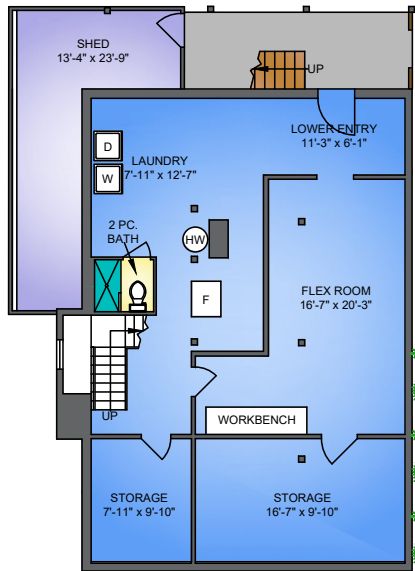
# 1022 SEVENTH AVENUE NEW WESTMINSTER, BC



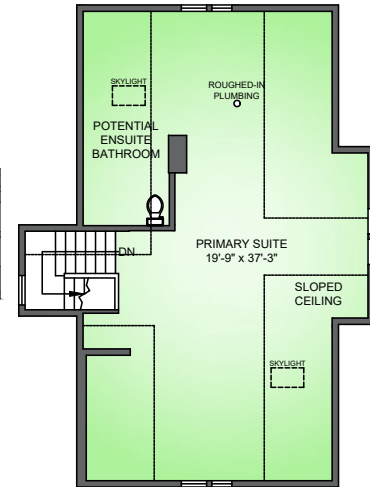
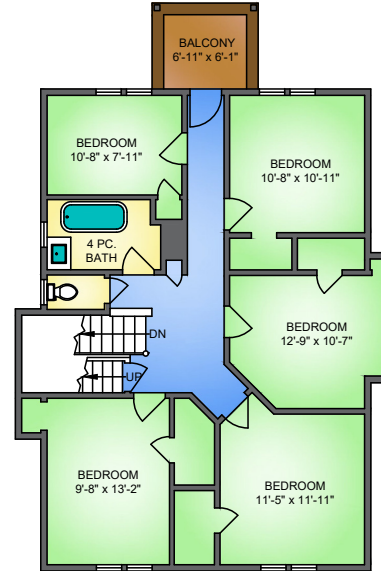
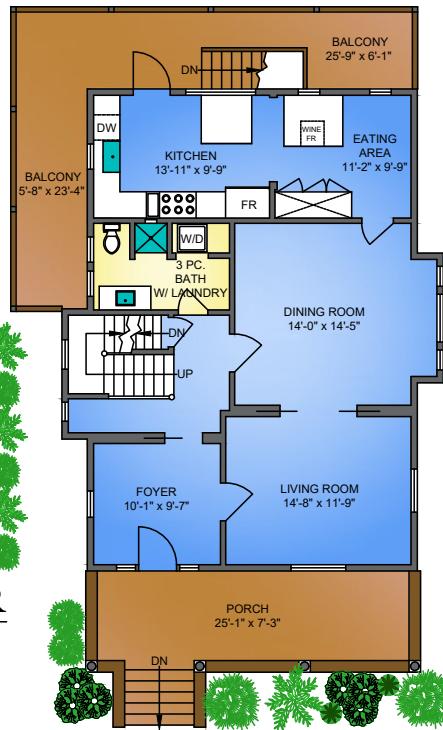
**MAIN/  
SECOND FLOOR**  
1040 SQ. FT.  
9'3" CEILING

**UPPER/  
THIRD FLOOR**  
1040 SQ. FT.  
8'3" CEILING

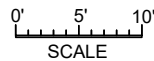
**ATTIC/  
FOURTH FLOOR**  
865 SQ. FT.  
7'11" CEILING



**LOWER/FIRST FLOOR**  
1019 SQ. FT.  
7'6"-7'4" CEILING



NORTH



1022 SEVENTH AVE, NEW WESTMINSTER					
JANUARY 13, 2022					
PREPARED BY PROPER MEASURE.					
FOR THE EXCLUSIVE USE OF LESLIE GRAY AND LORI FRALIC.					
PLANS MAY NOT BE 100% ACCURATE. IF CRITICAL BUYER TO VERIFY DIMENSIONS AND MEASUREMENTS ARE APPROXIMATE.					
FLOOR	AREA (SQ. FT.)				
	FINISHED	UNFINISHED	GARAGE	SHED	DECK / PATIO
LOWER/FIRST	-	1013	250	194	-
MAIN/SECOND	1040	-	-	-	444
UPPER/THIRD	1040	-	-	-	42
ATTIC/FOURTH	865	-	-	-	-
<b>TOTAL</b>	<b>2945</b>	<b>1019</b>	<b>250</b>	<b>194</b>	<b>486</b>
TOTAL SQ.FT. = 3,964 (FINISHED+UNFINISHED)					



Lori Fralic PREC **604-312-0738** Leslie Gray PREC **604-833-7780** [fralicrealestate.com](http://fralicrealestate.com)

