

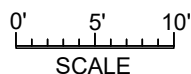
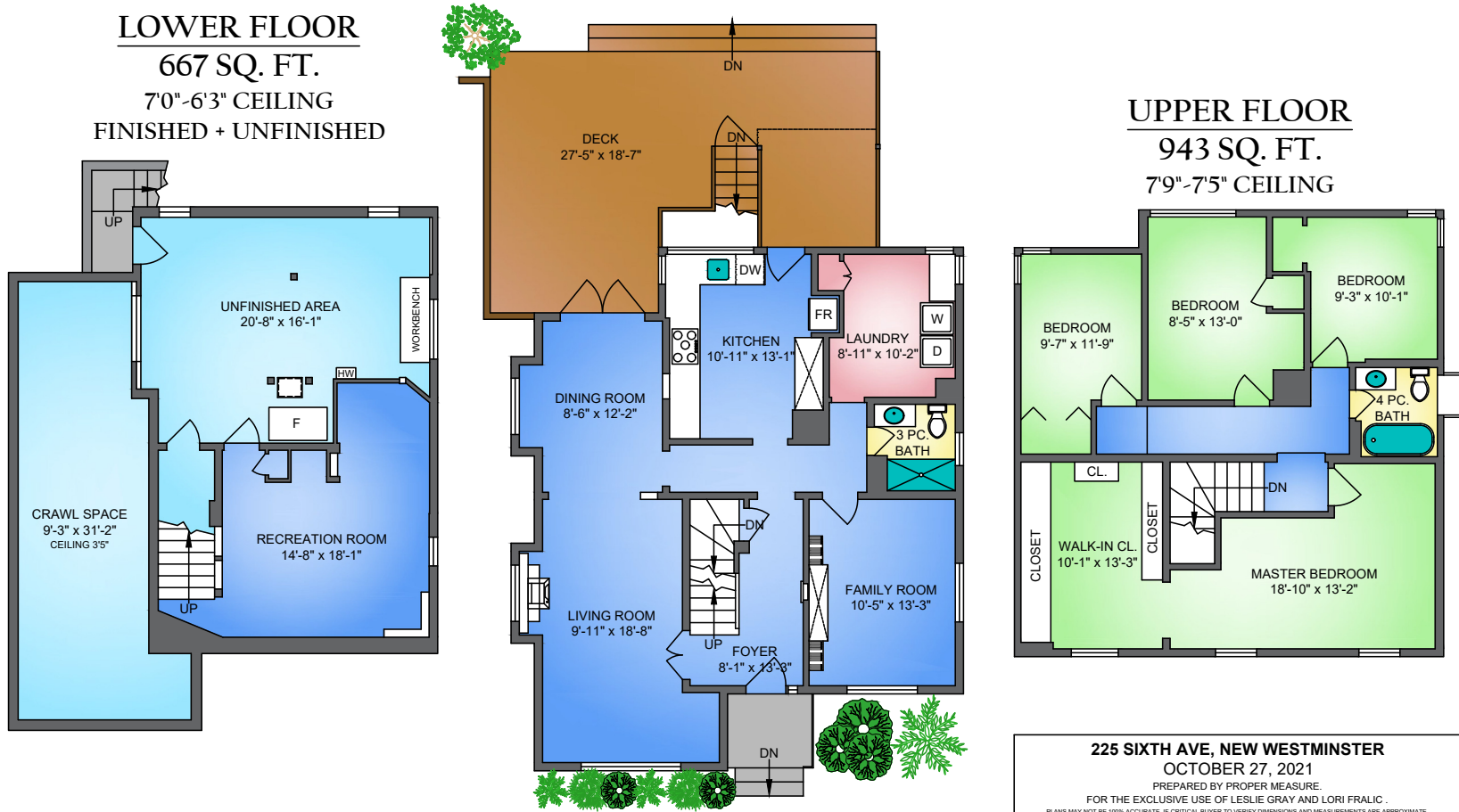


225 SIXTH AVENUE NEW WESTMINSTER, BC

MAIN FLOOR
1024 SQ. FT.
8'0" CEILING

LOWER FLOOR
667 SQ. FT.
7'0"-6'3" CEILING
FINISHED + UNFINISHED

UPPER FLOOR
943 SQ. FT.
7'9"-7'5" CEILING



225 SIXTH AVE, NEW WESTMINSTER
OCTOBER 27, 2021
PREPARED BY PROPER MEASURE.
FOR THE EXCLUSIVE USE OF LESLIE GRAY AND LORI FRALIC.
PLANS MAY NOT BE 100% ACCURATE. IF CRITICAL BUYER TO VERIFY DIMENSIONS AND MEASUREMENTS ARE APPROXIMATE.

FLOOR	AREA (SQ. FT.)			
	FINISHED	UNFINISHED	CRAWL SPACE	DECK / PATIO
MAIN	1024	-	-	401
UPPER	943	-	-	-
LOWER	338	329	333	-
TOTAL	2305	329	333	401
TOTAL SQ. FT. = 2634 (FINISHED+UNFINISHED)				

