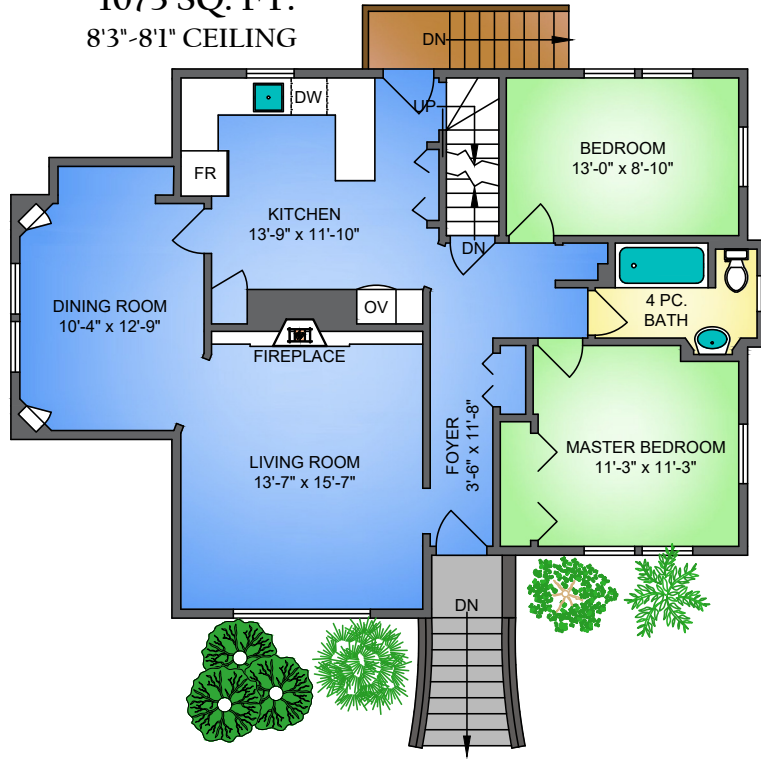




201 THIRD AVENUE NEW WESTMINSTER, BC

MAIN FLOOR
1073 SQ. FT.
8'3"-8'1" CEILING

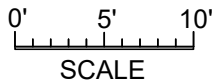


UPPER FLOOR
536 SQ. FT.



LOWER FLOOR
892 SQ. FT.
7'1" CEILING

NORTH



201 3RD AVE, NEW WESTMINSTER
OCTOBER 20, 2021
PREPARED BY PROPER MEASURE
FOR THE EXCLUSIVE USE OF LESLIE GRAY AND LORI FRALIC.
PLANS MAY NOT BE 100% ACCURATE. IF CRITICAL BUYER TO VERIFY DIMENSIONS AND MEASUREMENTS ARE APPROXIMATE.

FLOOR	AREA (SQ. FT.)		
	FINISHED	CELLAR	GARAGE
MAIN	1073	-	-
UPPER	536	-	-
LOWER	892	61	201
TOTAL	2501	61	201

