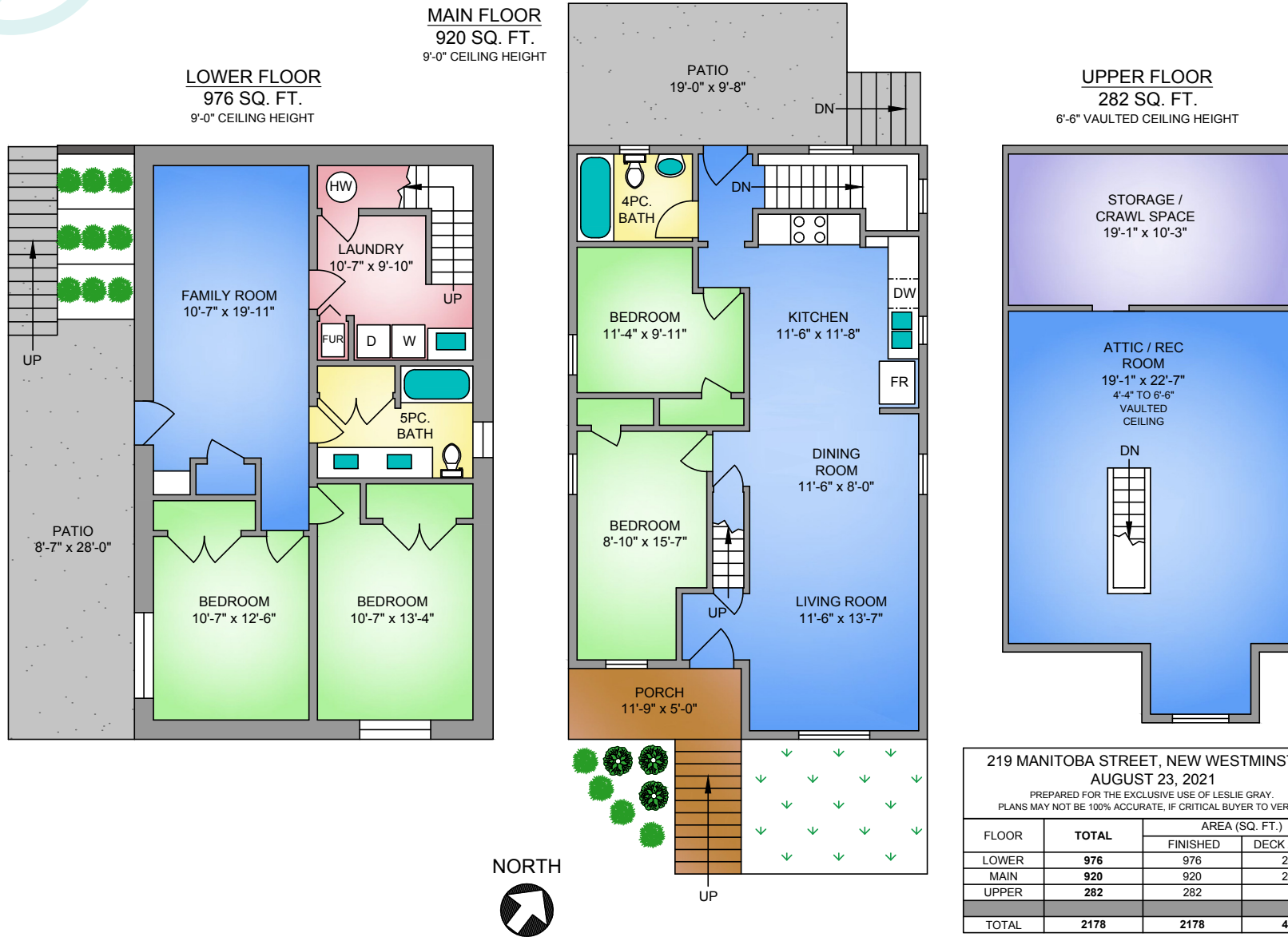


# 219 MANITOBA STREET NEW WESTMINSTER, BC



219 MANITOBA STREET, NEW WESTMINSTER  
AUGUST 23, 2021  
PREPARED FOR THE EXCLUSIVE USE OF LESLIE GRAY.  
PLANS MAY NOT BE 100% ACCURATE, IF CRITICAL BUYER TO VERIFY.

FLOOR	TOTAL	AREA (SQ. FT.)	
		FINISHED	DECK / PATIO
LOWER	976	976	240
MAIN	920	920	245
UPPER	282	282	-
<b>TOTAL</b>	<b>2178</b>	<b>2178</b>	<b>485</b>