

**Lower Floor Plan**  
Floor Area: 415 sq.ft.



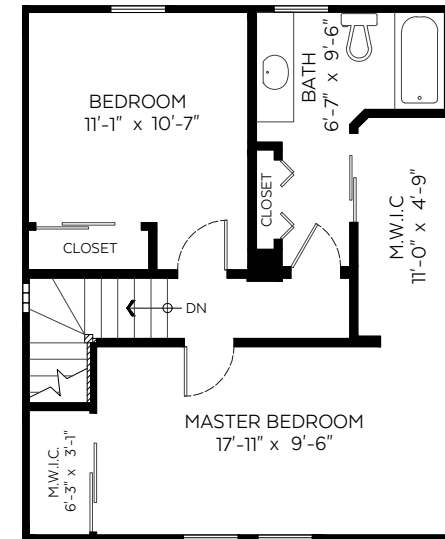
**Main Floor Plan**  
Floor Area: 854 sq.ft.

# 818 MILTON STREET NEW WESTMINSTER, BC

Main Floor:	854 sq.ft.
Upper Floor:	595 sq.ft.
Lower Floor:	415 sq.ft.
<b>Total:</b>	<b>1,864 sq.ft.</b>
Restr. Headroom:	373 sq.ft.

### Auxiliary Area

Deck:	248 sq.ft.
Storage:	154 sq.ft.



**Upper Floor Plan**  
Floor Area: 595 sq.ft.



Valid Until: March 29, 2021

The floor plan is not suitable for architectural/construction and is covered under E&O. © Excelsior Measuring Inc. 2021. All rights reserved for Excelsior Measuring Inc. Users shall not publish and distribute such material (in whole or in part) and/or incorporate it in other works in any form.



Lori Fralic 604-312-0738

Leslie Gray PREC 604-833-7780

fralicrealestate.com

