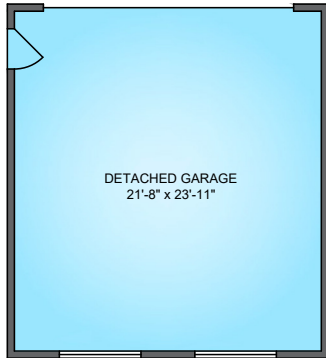


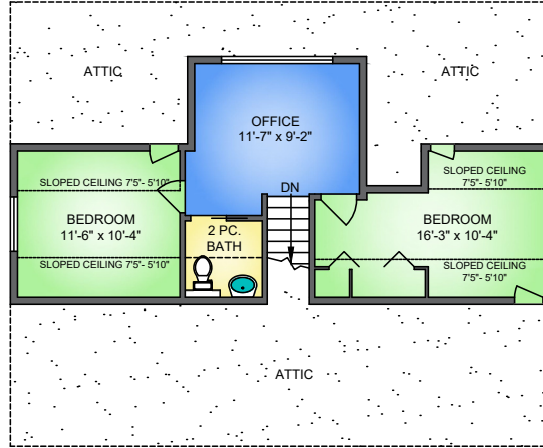
538 AMESS STREET NEW WESTMINSTER, BC



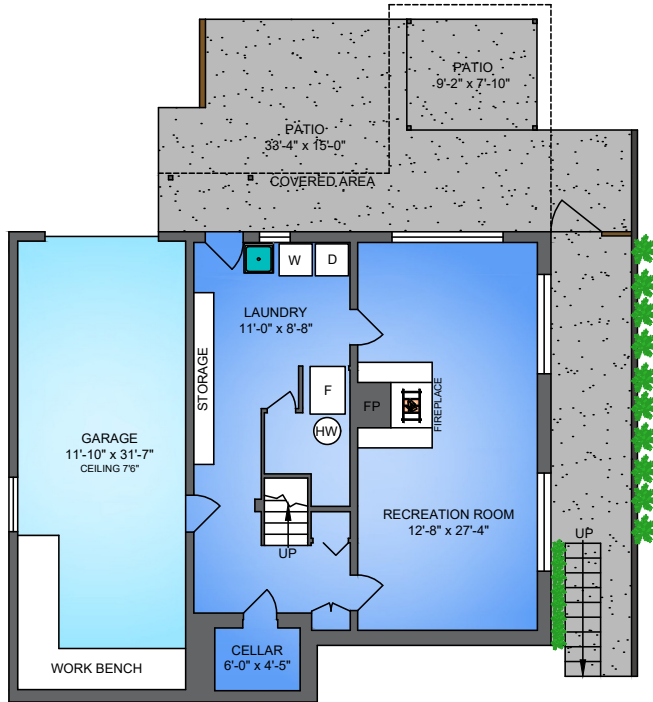
DETACHED GARAGE 564 SQ. FT.



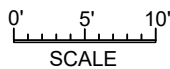
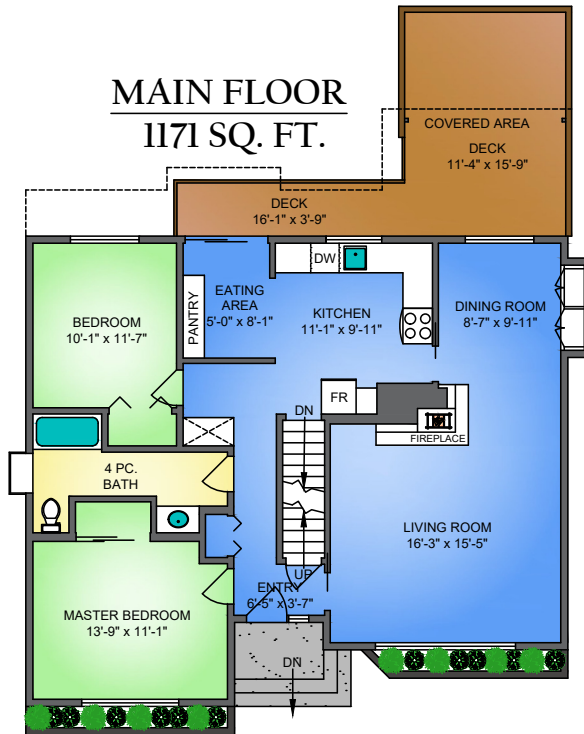
UPPER FLOOR 498 SQ. FT.



LOWER FLOOR 740 SQ. FT.



MAIN FLOOR 1171 SQ. FT.



NORTH



538 AMESS STREET, NEW WESTMINSTER

JUNE 30, 2021

PREPARED BY PROPER MEASURE.
FOR THE EXCLUSIVE USE OF LORI FRALIC AND LESLIE GRAY.
PLANS MAY NOT BE 100% ACCURATE, IF CRITICAL BUYER TO VERIFY DIMENSIONS AND MEASUREMENTS ARE APPROXIMATE.

FLOOR	AREA (SQ. FT.)				
	FINISHED	CELLAR	GARAGE	DETACHED GARAGE	DECK / PATIO
MAIN	1171	-		564	239
UPPER	498	-		-	-
LOWER	740	47	413	-	426
TOTAL	2409	47	413	564	665