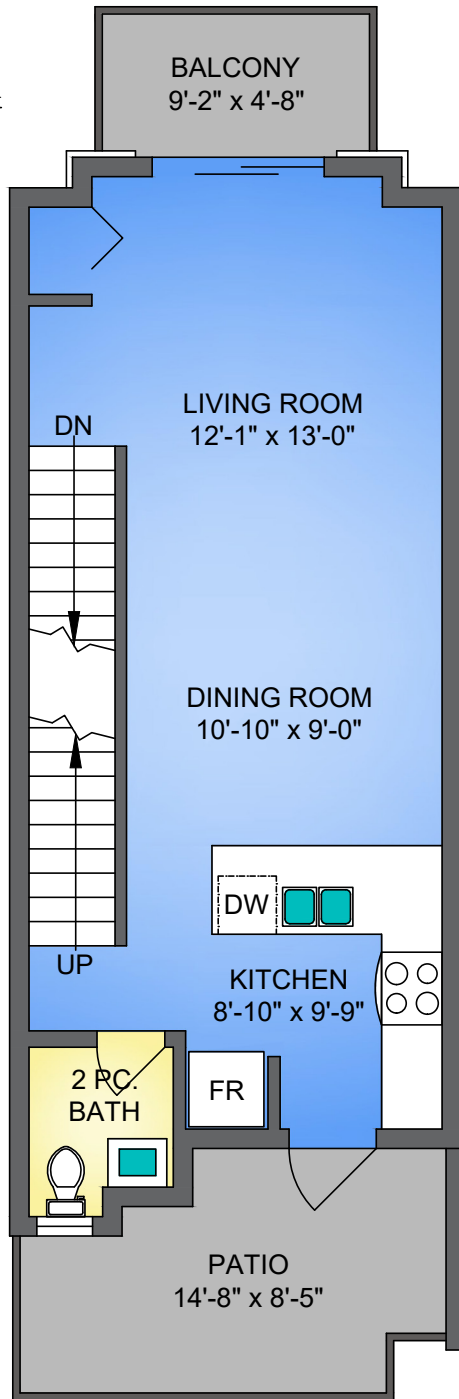
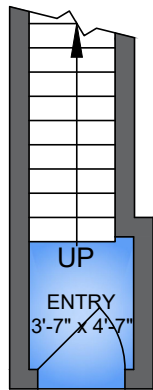


43-838 ROYAL AVENUE
NEW WESTMINSTER, BC

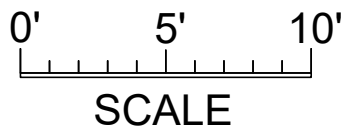


MAIN FLOOR
507 SQ. FT.
9'0" CEILING

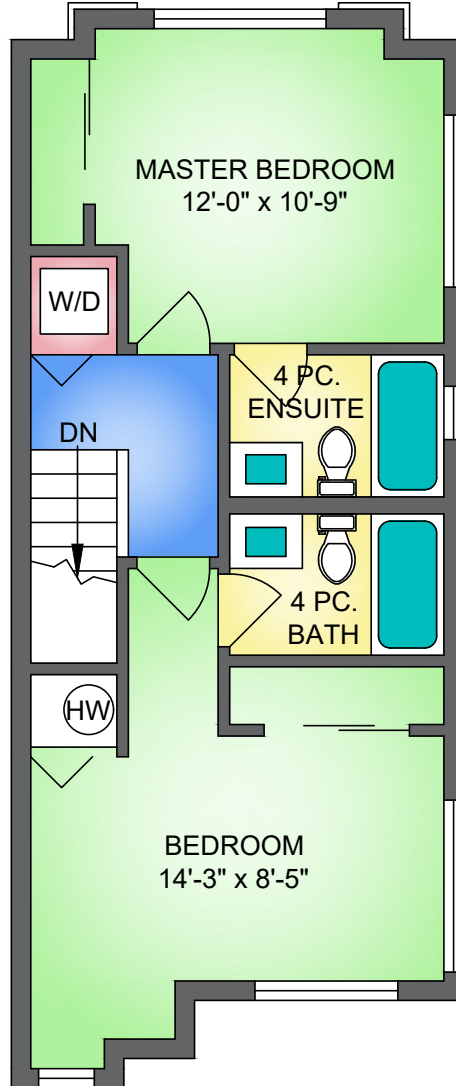
LOWER FLOOR
22 SQ. FT.



NORTH



UPPER FLOOR
507 SQ. FT.



43-838 ROYAL AVE, NEW WESTMINSTER		
MAY 21, 2021		
PREPARED BY PROPER MEASURE.		
FOR THE EXCLUSIVE USE OF LESLIE GRAY AND LORI FRALIC.		
PLANS MAY NOT BE 100% ACCURATE, IF CRITICAL BUYER TO VERIFY DIMENSIONS AND MEASUREMENTS ARE APPROXIMATE.		
FLOOR	AREA (SQ. FT.)	
	FINISHED	DECK / PATIO
MAIN	507	149
UPPER	507	-
LOWER	22	-
TOTAL	1036	149