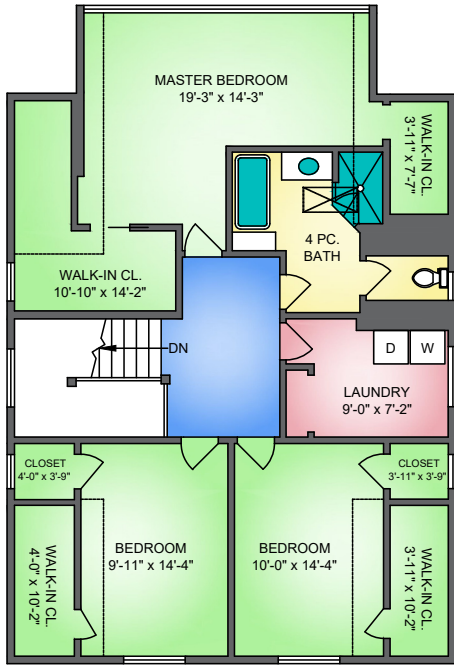


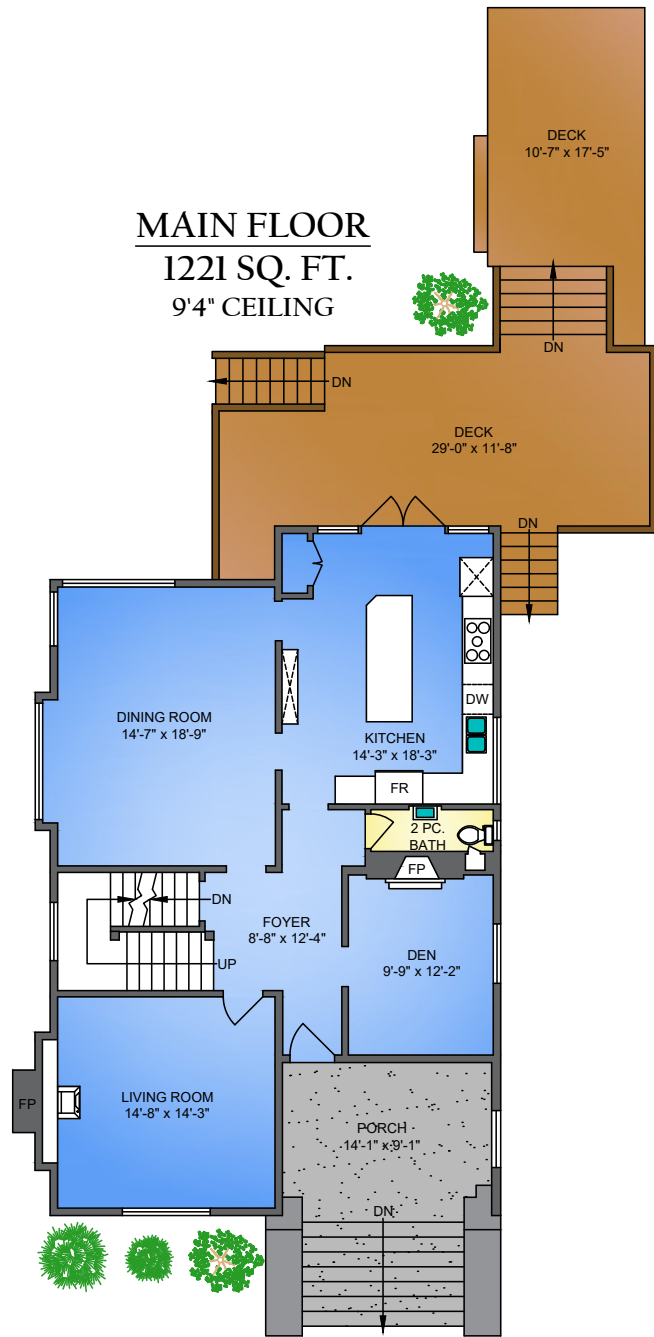


424 THIRD STREET NEW WESTMINSTER, BC

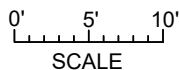
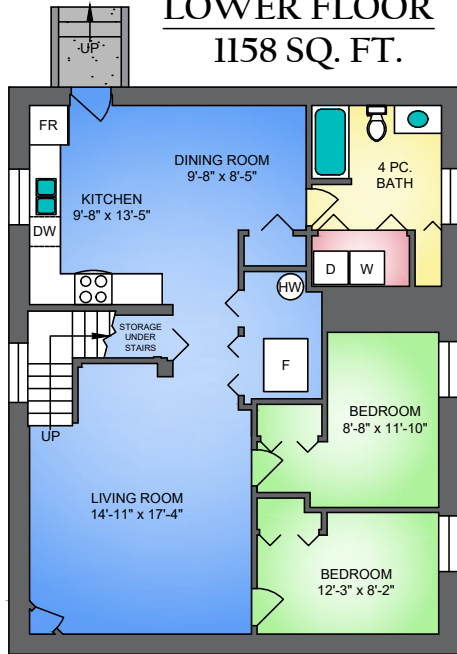
UPPER FLOOR 1248 SQ. FT.



MAIN FLOOR 1221 SQ. FT. 9'4" CEILING



LOWER FLOOR 1158 SQ. FT.



424 THIRD STREET, NEW WESTMINSTER
FEBRUARY 19, 2021
PREPARED BY PROPER MEASURE.
FOR THE EXCLUSIVE USE OF LORI FRALIC AND LESLIE GRAY.
PLANS MAY NOT BE 100% ACCURATE. IF CRITICAL BUYER TO VERIFY DIMENSIONS AND MEASUREMENTS ARE APPROXIMATE.
THE FLOOR PLAN IS NOT INTENDED FOR ARCHITECTURAL OR CONSTRUCTION USE. E & O INSURED.

FLOOR	AREA (SQ. FT.)	
	FINISHED	DECK / PATIO
MAIN	1221	665
UPPER	1248	-
LOWER	1158	-
TOTAL	3627	665