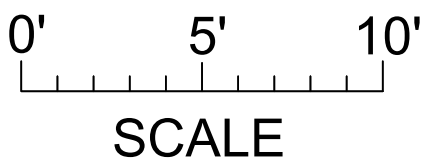
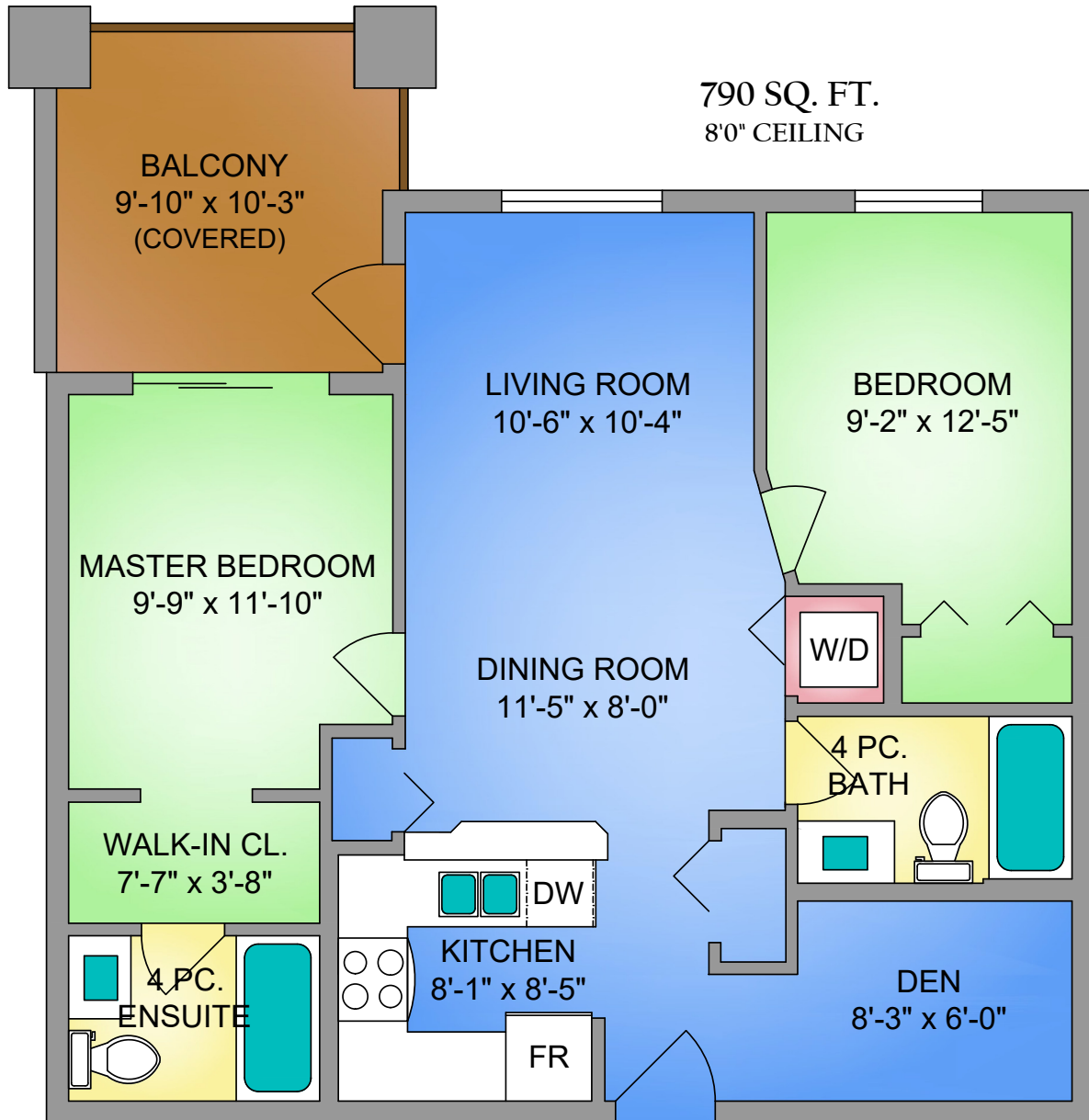
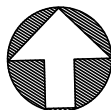




3306-240 SHERBROOKE STREET
NEW WESTMINSTER, BC



NORTH



3306 - 240 SHERBROOKE STREET, NEW WESTMINSTER
 DECEMBER 3, 2020
 PREPARED BY PROPER MEASURE.
 FOR THE EXCLUSIVE USE OF LORI FRALIC AND LESLIE GRAY.
PLANS MAY NOT BE 100% ACCURATE. IT IS CRITICAL BUYERS TO VERIFY DIMENSIONS AND MEASUREMENTS ARE APPROXIMATE.
 THE FLOOR PLAN IS NOT INTENDED FOR ARCHITECTURAL OR CONSTRUCTION USE.

FLOOR	AREA (SQ. FT.)	
	FINISHED	DECK / PATIO
MAIN	790	99