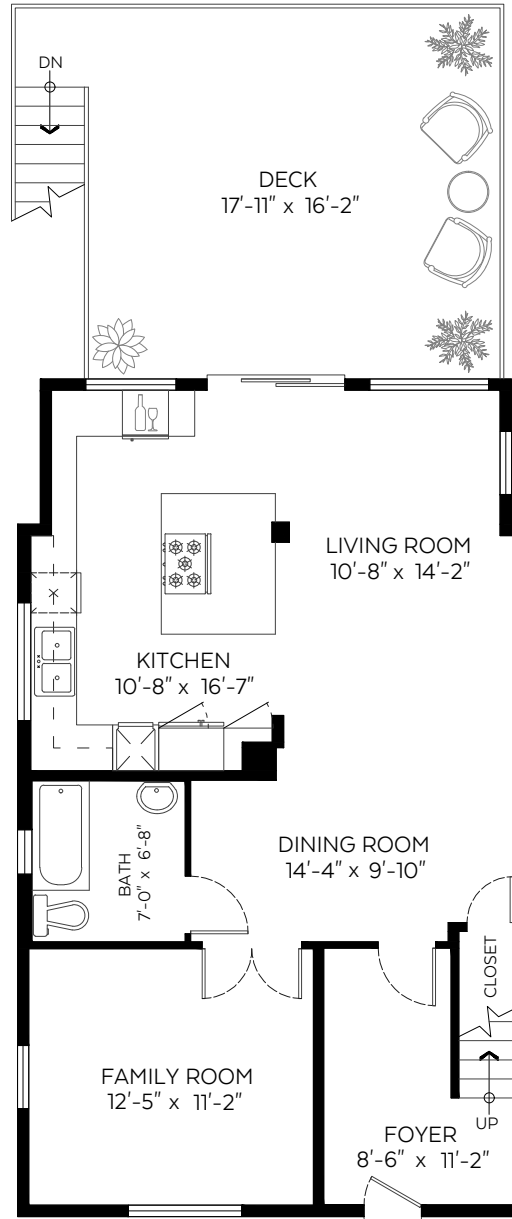


Lower Floor Plan
Floor Area: 676 sq.ft.



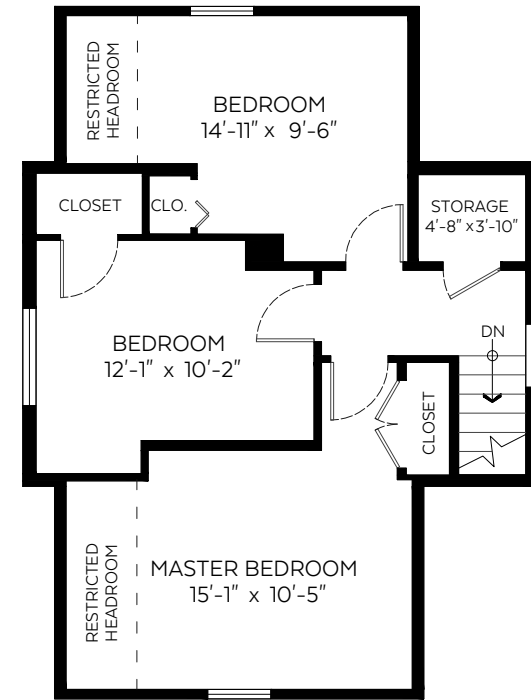
Main Floor Plan
Floor Area: 806 sq.ft.

358 HOSPITAL STREET NEW WESTMINSTER, BC

Main Floor:	806 sq.ft.
Upper Floor:	515 sq.ft.
Lower Floor:	676 sq.ft.
Total:	1,997 sq.ft.
Restricted H.R.:	59 sq.ft.
Laundry/Sto.:	130 sq.ft.

Auxiliary Area

Deck:	301 sq.ft.
-------	------------



Upper Floor Plan
Floor Area: 515 sq.ft.

Measured on: June 25, 2020

The floor plan is not suitable for architectural/construction and is covered under E&O. © Excelsior Measuring Inc. 2020. All rights reserved for Excelsior Measuring Inc. Users shall not publish and distribute such material (in whole or in part) and/or incorporate it in other works in any form.

