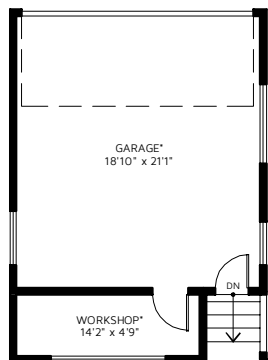
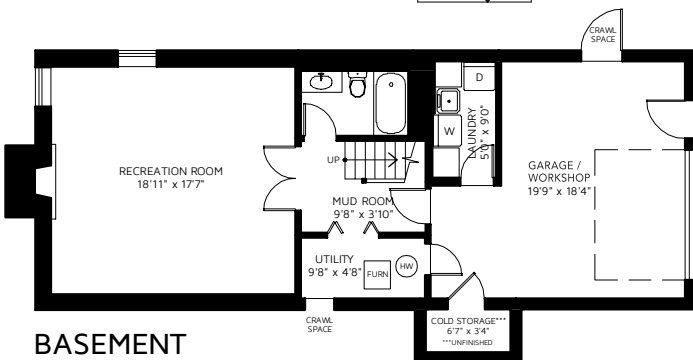
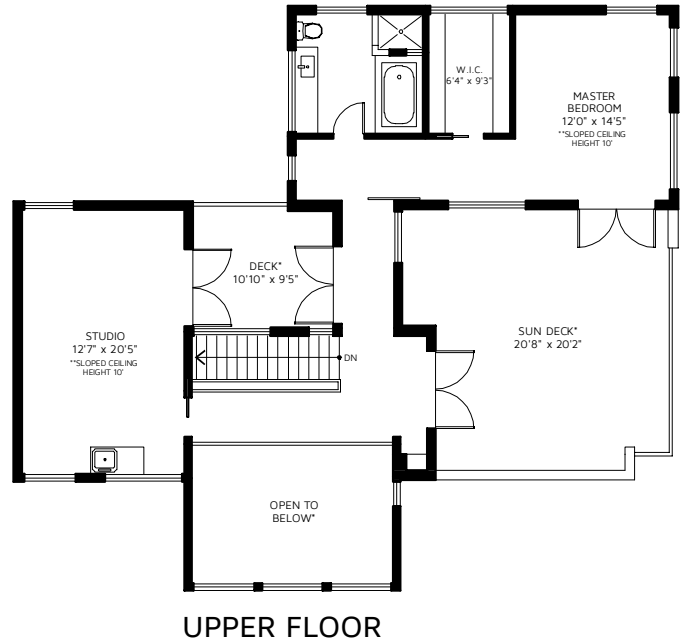
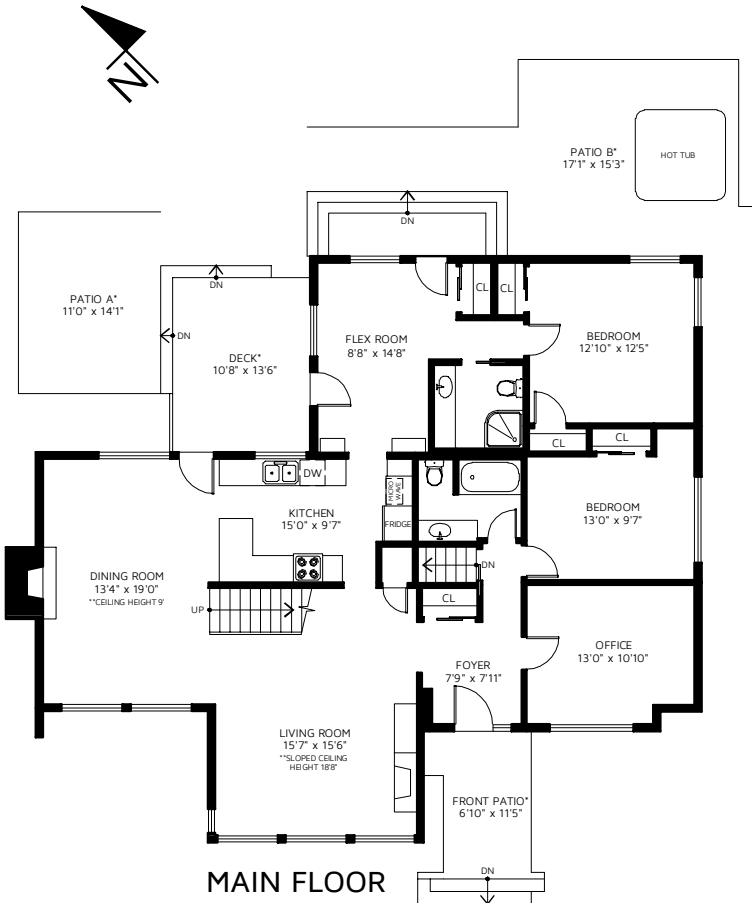


811 YORK STREET NEW WESTMINSTER, BC



UPPER FLOOR	1,004	SQ FT
MAIN FLOOR	1,691	SQ FT
BASEMENT	1,026	SQ FT
TOTAL FINISHED AREA	3,721	SQ FT
UNFINISHED***	34	SQ FT
TOTAL AREA	3,755	SQ FT

DECK*	103	SQ FT
SUN DECK*	403	SQ FT
FRONT PATIO*	78	SQ FT
DECK*	144	SQ FT
PATIO A*	155	SQ FT
PATIO B*	428	SQ FT
DETACHED GARAGE*	518	SQ FT

*NOT INCLUDED IN OVERALL SQUARE FOOTAGE



FLOOR PLAN IS PROVIDED BY REAL MEASUREMENTS AND RENDERINGS. FOR PROMOTIONAL USE ONLY. NOT FOR ARCHITECTURAL OR CONSTRUCTION USE. AREA IS CALCULATED USING ANSI Z765 - 2003 METHOD. WHILE EVERY EFFORT IS MADE TO ENSURE THE ACCURACY, DIMENSIONS AND TOTAL AREA ARE NOT GUARANTEED. TOTAL FINISHED AREA INCLUDES GARAGE AND MAY INCLUDE UNFINISHED OR UNDER HEIGHT AREA. E&OE