

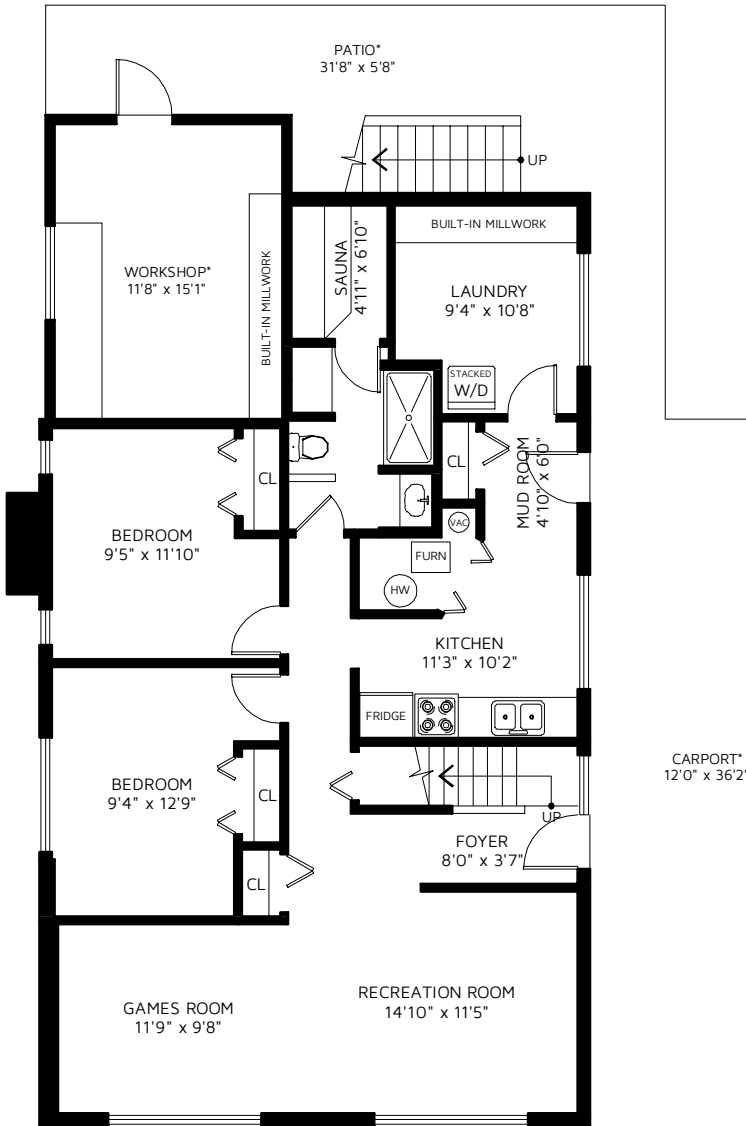


# 419 OAK STREET NEW WESTMINSTER, BC

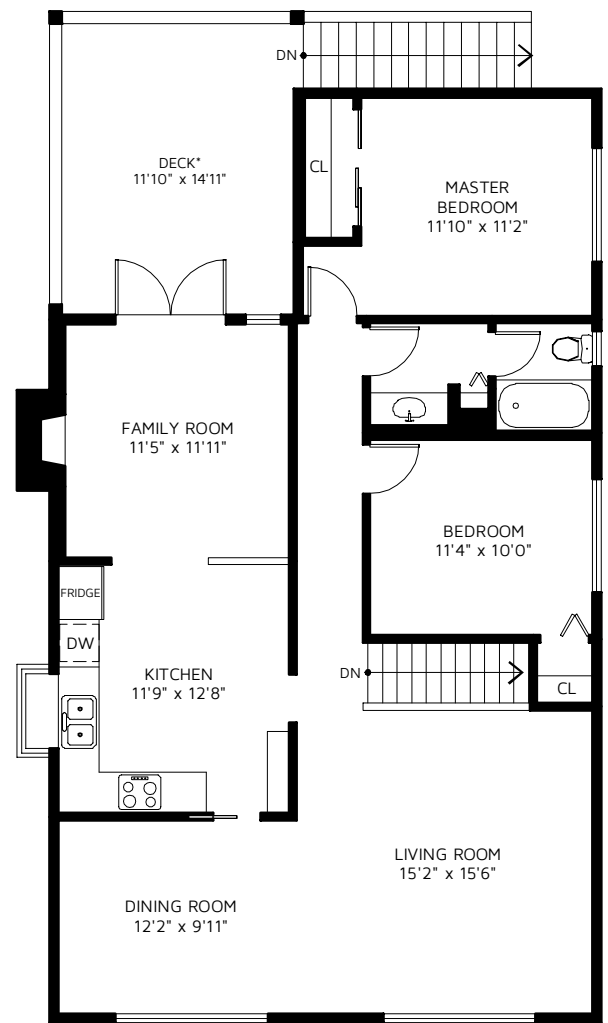
UPPER FLOOR	1,203	SQ FT
MAIN FLOOR	1,201	SQ FT
<b>TOTAL FINISHED AREA</b>	<b>2,404</b>	<b>SQ FT</b>

DECK*	194	SQ FT
CARPORT*	450	SQ FT
WORKSHOP*	190	SQ FT
PATIO*	178	SQ FT

\*NOT INCLUDED IN OVERALL SQUARE FOOTAGE



BELOW MAIN FLOOR



MAIN FLOOR

FLOOR PLAN IS PROVIDED BY REAL MEASUREMENTS AND RENDERINGS. FOR PROMOTIONAL USE ONLY. NOT FOR ARCHITECTURAL OR CONSTRUCTION USE. AREA IS CALCULATED USING ANSI Z765 - 2003 METHOD. WHILE EVERY EFFORT IS MADE TO ENSURE THE ACCURACY, DIMENSIONS AND TOTAL AREA ARE NOT GUARANTEED. TOTAL AREA MAY INCLUDE UNFINISHED OR UNDER HEIGHT AREA. E&OE

