



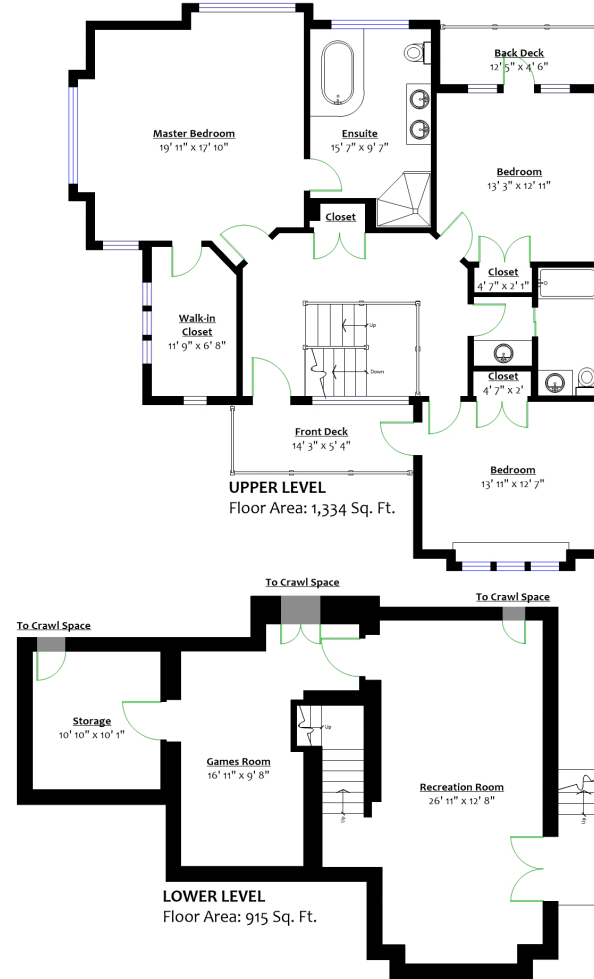
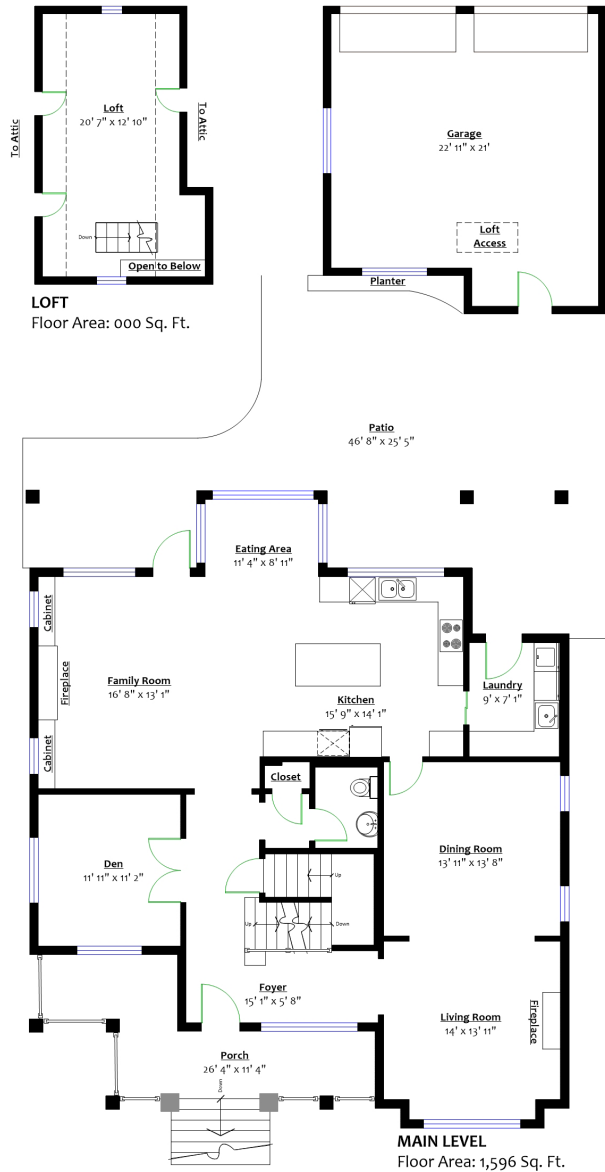
Tracey Davies
604.761.4138
traceydaviesrealtor@gmail.com



Lori Fralic
604.312.0738
lori@lorifralic.com

902 CHILLIWACK STREET NEW WESTMINSTER, BC

Main Level:	1,596 sq. ft.	Garage:	501 sq. ft.
Upper Level:	1,334 sq. ft.	Loft:	275 sq. ft.
Lower Level:	915 sq. ft.	Porch:	172 sq. ft.
Total:	3,845 sq. ft.	Patio:	782 sq. ft.
		Front Deck:	76 sq. ft.
		Back Deck:	56 sq. ft.
		Total:	1,862 sq. ft.



** Approx. based on interior measurements to exterior walls
*** Total square footage not taken from original blueprint



LORI FRALIC
REALTOR®

604-312-0738 • lori@lorifralic.com • lorifralic.com



EACH OFFICE IS INDEPENDENTLY OWNED AND OPERATED