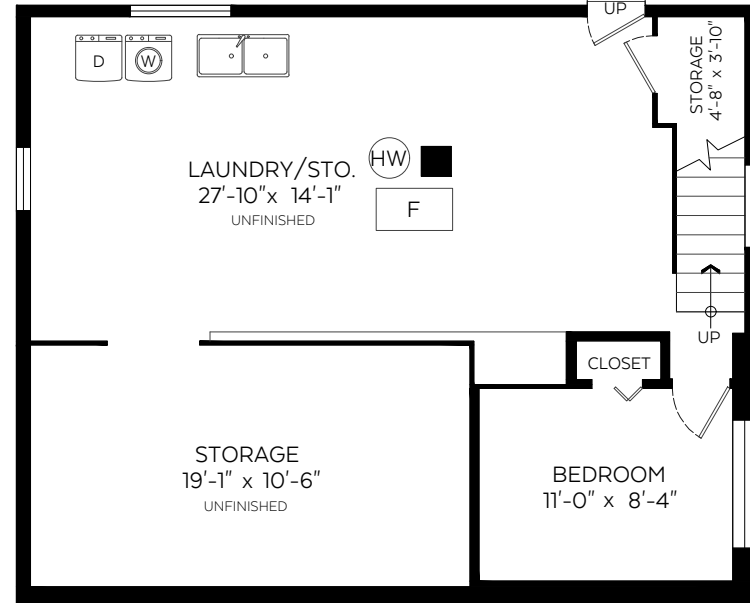
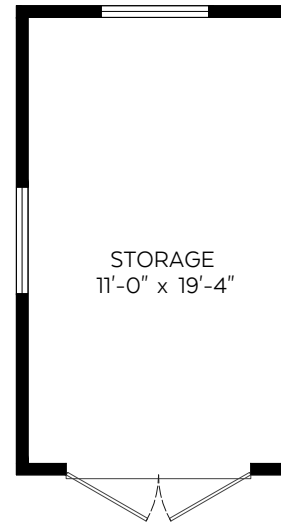
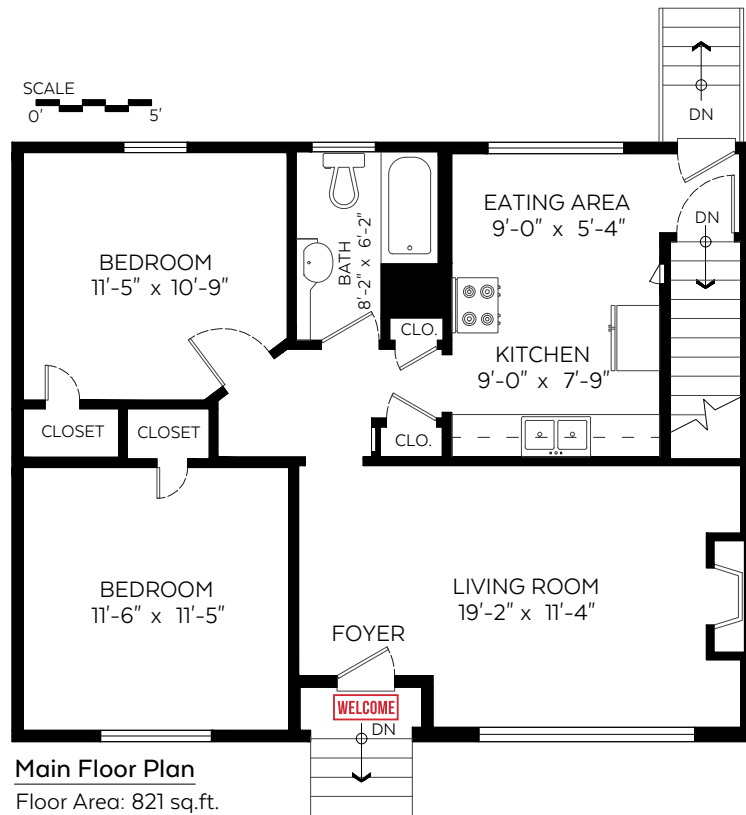




218 NINTH AVENUE
NEW WESTMINSTER, BC

Main Floor:	821 sq.ft.
Fin. Lower Floor:	120 sq.ft.
Total:	941 sq.ft.
Unfin. Lower Floor:	713 sq.ft.
Grand Total:	1,654 sq.ft.
Storage:	244 sq.ft.



Measured on: April 11, 2019

The floor plan is not suitable for architectural/construction and is covered under E&O. © Excelsior Measuring Inc. 2019. All rights reserved for Excelsior Measuring Inc. Users shall not publish and distribute such material (in whole or in part) and/or incorporate it in other works in any form.