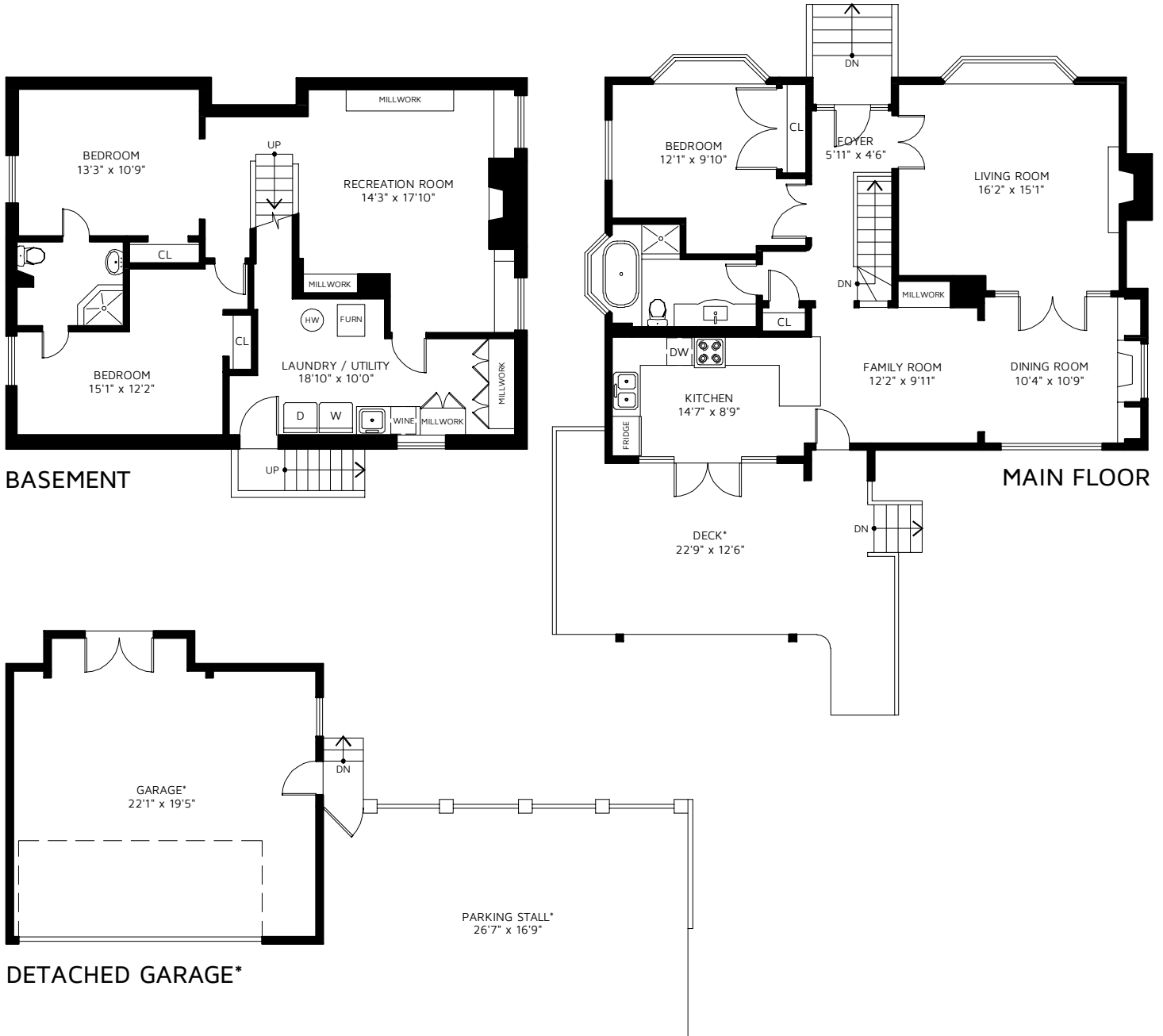




921 CHESTNUT STREET NEW WESTMINSTER, BC

MAIN FLOOR 1,060 SQ FT
 BASEMENT 1,016 SQ FT
TOTAL FINISHED AREA 2,076 SQ FT

DECK* 349 SQ FT
 DETACHED GARAGE* 498 SQ FT
 PARKING STALL* 446 SQ FT
 *NOT INCLUDED IN OVERALL SQUARE FOOTAGE



FLOOR PLAN IS PROVIDED BY REAL MEASUREMENTS AND RENDERINGS. FOR PROMOTIONAL USE ONLY. NOT FOR ARCHITECTURAL OR CONSTRUCTION USE. AREA IS CALCULATED USING ANSI Z765 - 2003 METHOD. WHILE EVERY EFFORT IS MADE TO ENSURE THE ACCURACY, DIMENSIONS AND TOTAL AREA ARE NOT GUARANTEED. E&OE