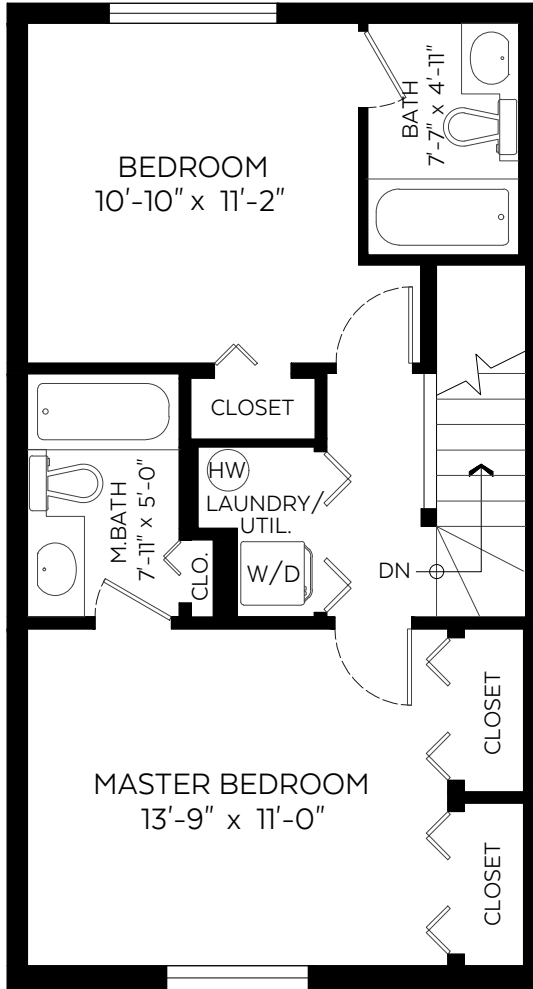




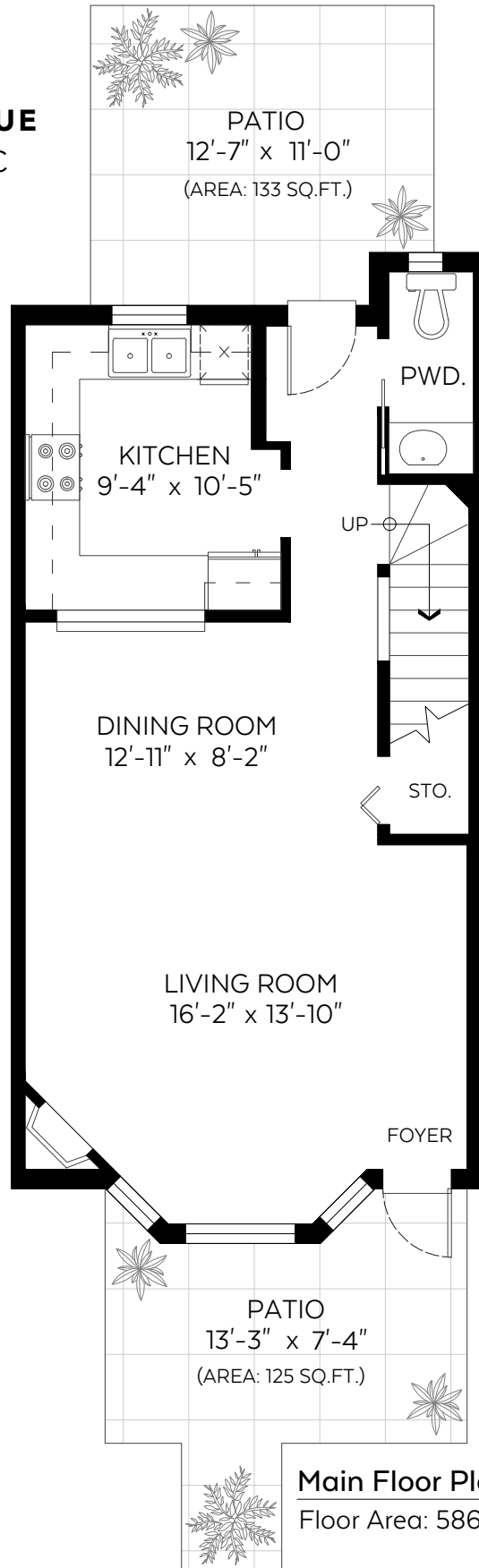
61-620 QUEENS AVENUE
NEW WESTMINSTER, BC



Upper Floor Plan

Floor Area: 562 sq.ft

Main Floor:	586 sq.ft.
Upper Floor:	562 sq.ft.
Total:	1,148 sq.ft.
Auxiliary Area	
Patios:	258 sq.ft.



Main Floor Plan
 Floor Area: 586 sq.ft



Measured on: Aug. 9, 2018

The floor plan is not suitable for architectural/construction and is covered under E&O. © Excelsior Measuring Inc. 2018. All rights reserved for Excelsior Measuring Inc. Users shall not publish and distribute such material (in whole or in part) and/or incorporate it in other works in any form.

