

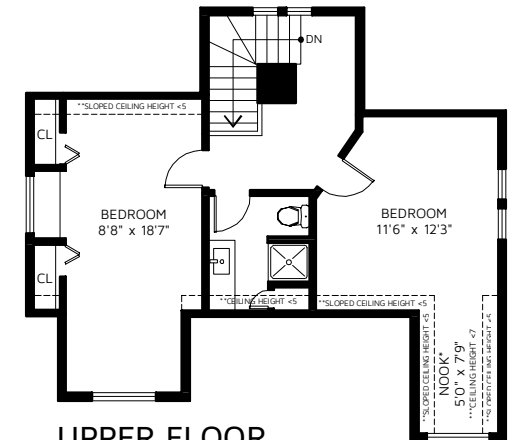
BASEMENT

308 FOURTH STREET
NEW WESTMINSTER, BC

UPPER FLOOR	474 SQ FT
MAIN FLOOR	1,492 SQ FT
BASEMENT	901 SQ FT
TOTAL FINISHED AREA	2,867 SQ FT

NOOK*	28 SQ FT
DECK*	459 SQ FT
PATIO*	157 SQ FT
DETACHED GARAGE*	266 SQ FT

*NOT INCLUDED IN OVERALL SQUARE FOOTAGE



UPPER FLOOR



FLOOR PLAN IS PROVIDED BY REAL MEASUREMENTS AND RENDERINGS. FOR PROMOTIONAL USE ONLY. NOT FOR ARCHITECTURAL OR CONSTRUCTION USE. AREA IS CALCULATED USING ANSI Z765 - 2003 METHOD. WHILE EVERY EFFORT IS MADE TO ENSURE THE ACCURACY, DIMENSIONS AND TOTAL AREA ARE NOT GUARANTEED. E&OE