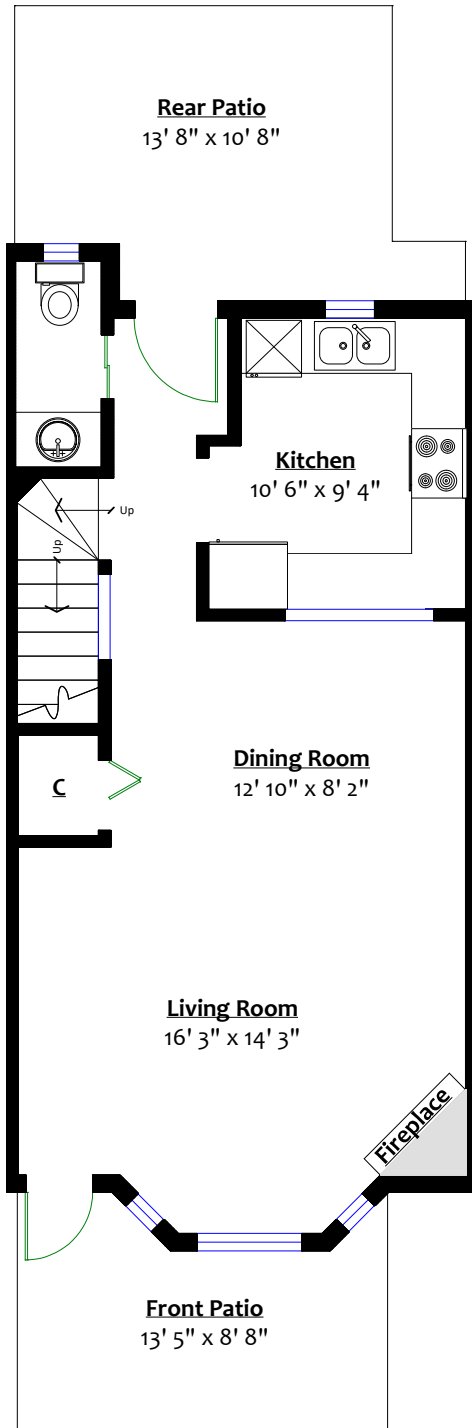




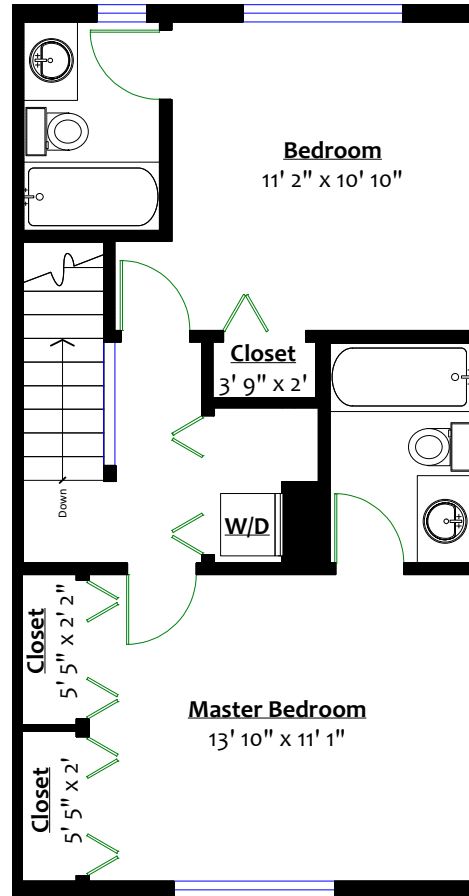
# #55 - 620 Queens Avenue, New Westminster, B.C.

## Totals\*\*

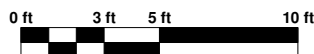
Main Level:	569 sq. ft.	Rear Patio:	143 sq. ft.
Upper Level:	544 sq. ft.	Deck:	99 sq. ft.
Total:	1,113 sq. ft.	Total:	242 sq. ft.



**MAIN LEVEL**  
Floor Area: 569 Sq. Ft.



**UPPER LEVEL**  
Floor Area: 544 Sq. Ft.



\*\* Approx. based on interior measurements to exterior walls  
\*\* Total square footage not taken from original blueprints